

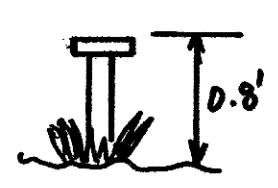
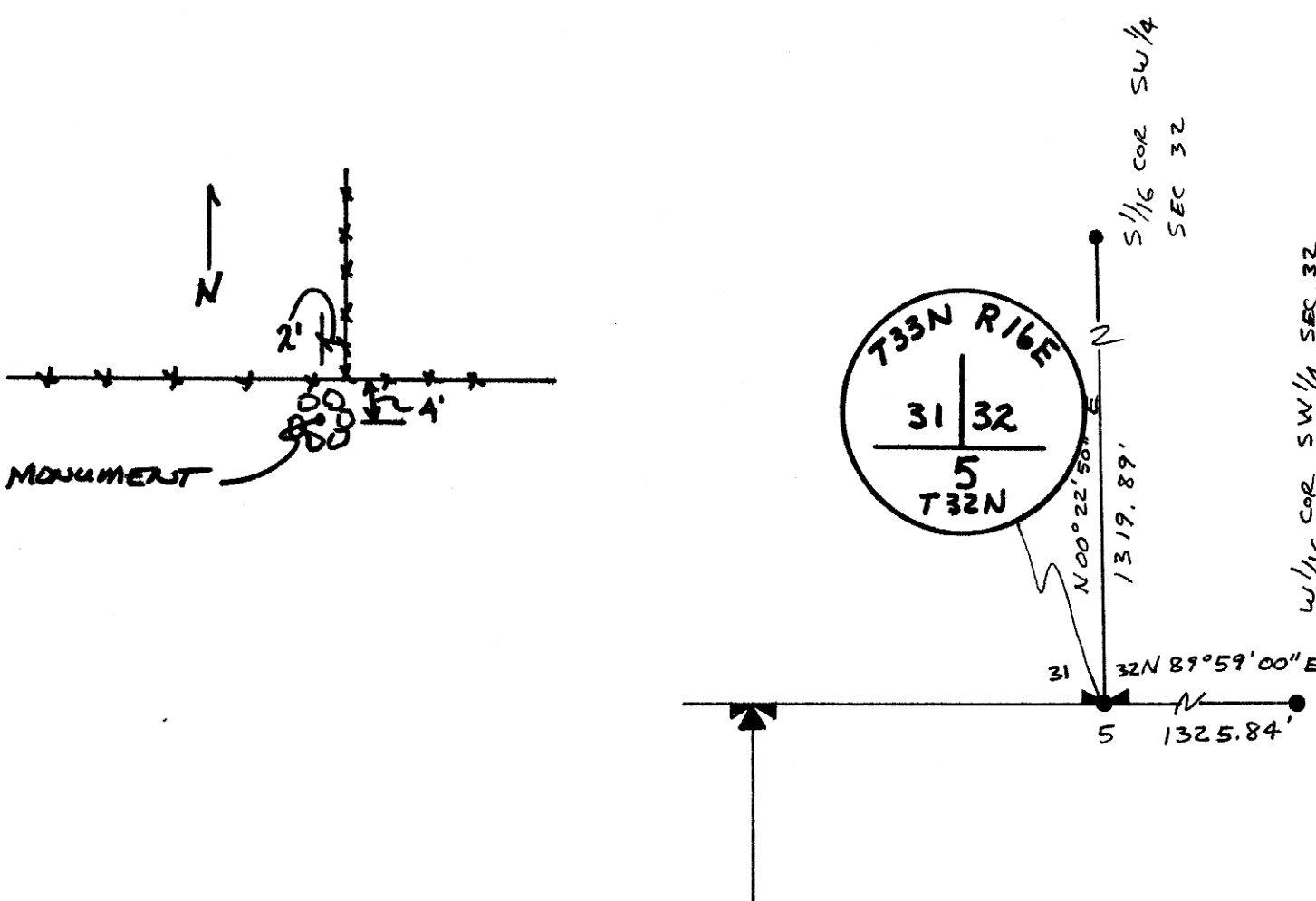
INSTRUCTIONS

1. Original and/or record used to evaluate the corner position.
2. Description of record, note discrepancies in the record, state method of correction, if any, or lost or obliterated corners.
3. Description of monument and accessories set to perpetuate the corner position.
4. Sketch or corner, show all pertinent data which can best be shown in a sketch example, corner marking, topography ties, position of accessories, etc.
5. Certification must be signed and sealed by Registered Land Surveyor in State of Montana.
6. Fill in Cross Index & Section Diagram at bottom of sheet.

CERTIFIED CORNER RECORDATION

Corner SW SECTION CORNER T. 33 N R. 16 E P.M.M. HILL County 32

FOUND A BLM BRASS CAP MONUMENT. 1954 RESURVEY.
A RING OF ROCKS SURROUNDS THE MONUMENT WHICH IS LOCATED ABOUT TWO (2) FEET WEST AND FOUR (4) FEET SOUTH OF A FENCE CORNER.

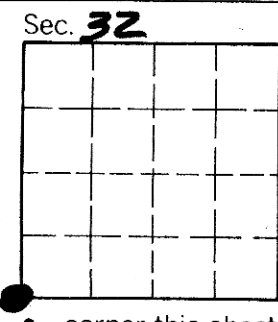


SKETCH OF CORNER

CERTIFICATION
I, DAVID M. ELIAS
certify the information shown herein is true and correct.
David M. Elias
Signature Ground Party Chief
I, T H Thomas
certify that this Corner Record correctly represents work performed by me or under my direction in compliance with the "Corner Recordation Act" (70-22-101, et seq., M.D.A.)
T H Thomas
Signature of Surveyor & Seal
Date: 5/10/83 Reg. No. 646 ES
Employer: Thomas, Dean & Hoskins, Inc

Office of Clerk and Recorder, County of HILL 467537. This "corner record" was filed for record on the May 13th day of 1983, was noted on the cross-index plat and is assigned page No. XXX, in book No. XXX

DIANE E. MELLEM
County Official
Carolyn Patrick
Cross Index No. _____ T. 33 R. 16 P.M.M.
FEE: \$none ✓ DEPUTY



• - corner this sheet

2-5