

INSTRUCTIONS

1. Original and/or subsequent record used to evaluate the corner position.
2. Description of evidence found, note discrepancies in the record, state method of establishing lost or obliterated corners.
3. Description of monument and accessories set to perpetuate the corner position.
4. Sketch of corner, show all pertinent data which can best be shown in a sketch example, corner marking, topography ties, position of accessories, etc.
5. Certification must be signed and sealed by Land Surveyor registered in the State of Montana.
6. Fill in Cross Index & Section Diagram at bottom of sheet.

CERTIFIED CORNER RECORDATION

Corner SOUTHEAST CORNER SECTION 24 T. 33 N., R. 15 E. P.M.M. HILL County

RECORD GLO 1896

Set a granite stone 16x10x5 ins. 11 ins. in the ground for cor. of secs. 19, 24, 25 and 30 marked with 4 notches on N. and 2 notches on S. edges; dig pits 24x18x12 ins. In each sec. 5 1/2 ft. dist. And raise a mound of earth 4 ft. base, 2 ft. high W. of cor.

FOUND MDT 2004

No evidence of the original corner found.

SET MDT 2004

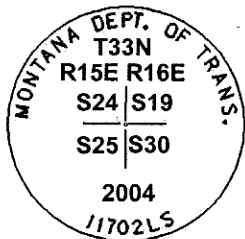
The position for this corner falls in the centerline of State Secondary Route 232, and was established from right-of-way plans for MDT Project FAP S 301. The transit field notes dated 1934 for these right-of-way plans, indicates the position for this corner was determined from the intersection of existing fence lines. At this position set a 5/8" x 24" rebar with 2" MDT aluminum cap 1" below asphalt surface. Cap is stamped as shown below. Set 4 reference monuments (5/8" x 24" rebar with 2" MDT aluminum cap) as described below:

R.M. : Stamped "T33N R15E, S24, RM, 2004, 11702LS", with an arrow pointing to Section corner bears N41°21'15"W, 53.02' from the Section corner.

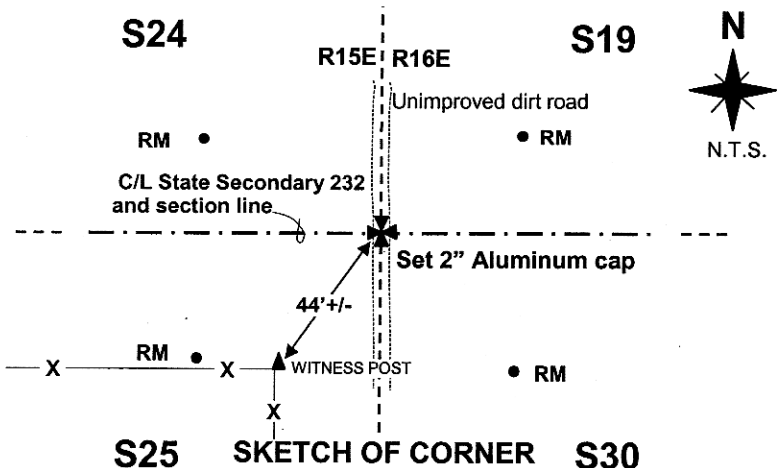
R.M. : Stamped "T33N R16E, S19, RM, 2004, 11702LS", with an arrow pointing to Section corner bears N36°06'00"E, 49.84' from the Section corner.

R.M. : Stamped "T33N R16E, S30, RM, 2004, 11702LS", with an arrow pointing to Section corner bears S42°21'48"E, 54.27' from the Section corner.

R.M. : Stamped "T33N R15E, S25, RM, 2004, 11702LS", with an arrow pointing to Section corner bears S46°40'36"W, 58.64' from the Section corner.
Set a witness post with MDT decal 44'+/- Southwesterly at fence corner.



Refer to Certificate of Survey number 554615



CERTIFICATION

I, _____, certify the information shown herein is true and correct.

Signature of Ground Party Chief

I, Theodore M. Brown, certify that this Corner Record correctly represents work performed by me or under my direction in compliance with the "Corner Recordation Act" (70-22-101, et seq., MCA).

Theodore M. Brown
Signature of Surveyor & Seal

Date: 9/13/04 Reg. No. 11702LS

Employer: Montana Department of Transportation

Office of Clerk and Recorder, County of HILL. This "corner record" was filed for record on _____ noted

on the cross-index plat,

554617 Fee: \$.00 Bk Pg

HILL COUNTY Filed 09/14/2004 At 10:00 AM

DIANE E. MELLEME, Clk & Rcdr By *D. Williams*

Return to: MT. DEPT. OF TRANSPORTATION P. O. BOX 201001

HELENA MT 59620-1001

Official

Sec. 24

• — Corner this sheet

554617

Cross Index No. R25 T. 33 N. R. 15 E., PMM