

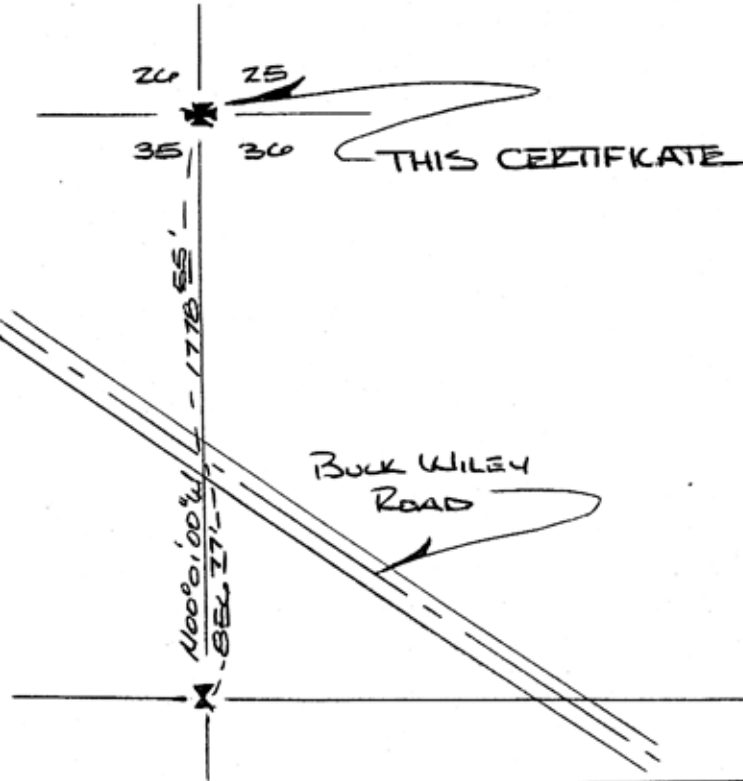
INSTRUCTIONS

1. and/or subsequent record used to evaluate the corner position.
2. Description of evidence found, note discrepancies in the record, state method of establishing lost or obliterated corners.
3. Description of monument and accessories set to perpetuate the corner position.
4. Sketch of corner, show all pertinent data which can best be shown in a sketch example, corner marking, topography ties, position of accessories, etc.
5. Certification must be signed and sealed by Land Surveyor registered in the State of Montana.
6. Fill in Cross Index & Section Diagram at bottom of sheet.

CERTIFIED CORNER RECORDATION

Corner NOIETHWEST-SEC. 36 T. 33 N R. 6 W P.M.M. GLACIER County

AT THE NORTHWEST CORNER OF SECTION 36, WE FIND:
 AN INTERSECTION OF FENCES COURSE E-W & S;
 A 1" PIPE USED FOR THE CORNER OF ADJACENT LOTS;
 A POWER LINE COURSE EAST-WEST, AND THE ORIGINAL
 STONE MONUMENT MARKED PROPERLY WITH 1 NOTCH
 ON THE SOUTH, AND 1 NOTCH ON THE WEST FACES.
 WE DRIVE A 3/8" x 24" REBAR W/ YELLOW PLASTIC
 CAP "# 8238 - TRIANGLE ENGINEERING", 20 INCHES
 INTO THE GROUND ALONGSIDE FOUND STONE.
 THE ORIGINAL NOTES WERE NOT OBTAINED FOR
 THIS SURVEY.



SKETCH OF CORNER

CERTIFICATION
 I, TODD POLOCK
 certify the information shown herein is true and correct.
Todd Polock
 Signature Ground Party Chief
 I, THOMAS L. RUSSELL
 certify that this Corner Record correctly represents work performed
 by me or under my direction in compliance with the "Corner
 Recordation Act" (70-22-001, et seq., M.C.A.)
Thomas L. Russell
 Signature of Surveyor & Seal
 Date: 11-30-88 Reg. No. 8238
 Employer: Δ ENGINEERING

Office of Clerk and Recorder, County of _____ . This "corner
 record" was filed for record on _____
 was noted on the cross-index plat and is assigned page No. _____
 book No. _____

V-21 County Official: T33 R6



Sec. 36

• - corner this sheet