

INSTRUCTIONS

1. For subsequent record used to evaluate the corner position.
2. If evidence found, note discrepancies in the record, state method of establishing lost or obliterated.
3. Description of monument and accessories set to perpetuate the corner position.
4. Sketch of corner, show all pertinent data which can best be shown in a sketch example, corner marking, topography ties, position of accessories, etc.
5. Certification must be signed and sealed by Land Surveyor registered in the State of Montana.
6. Fill in Cross Index & Section Diagram at bottom of sheet.

**CERTIFIED CORNER RECORDATION**

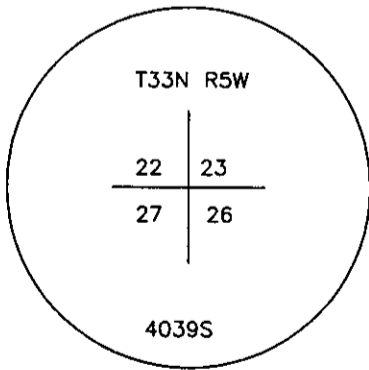
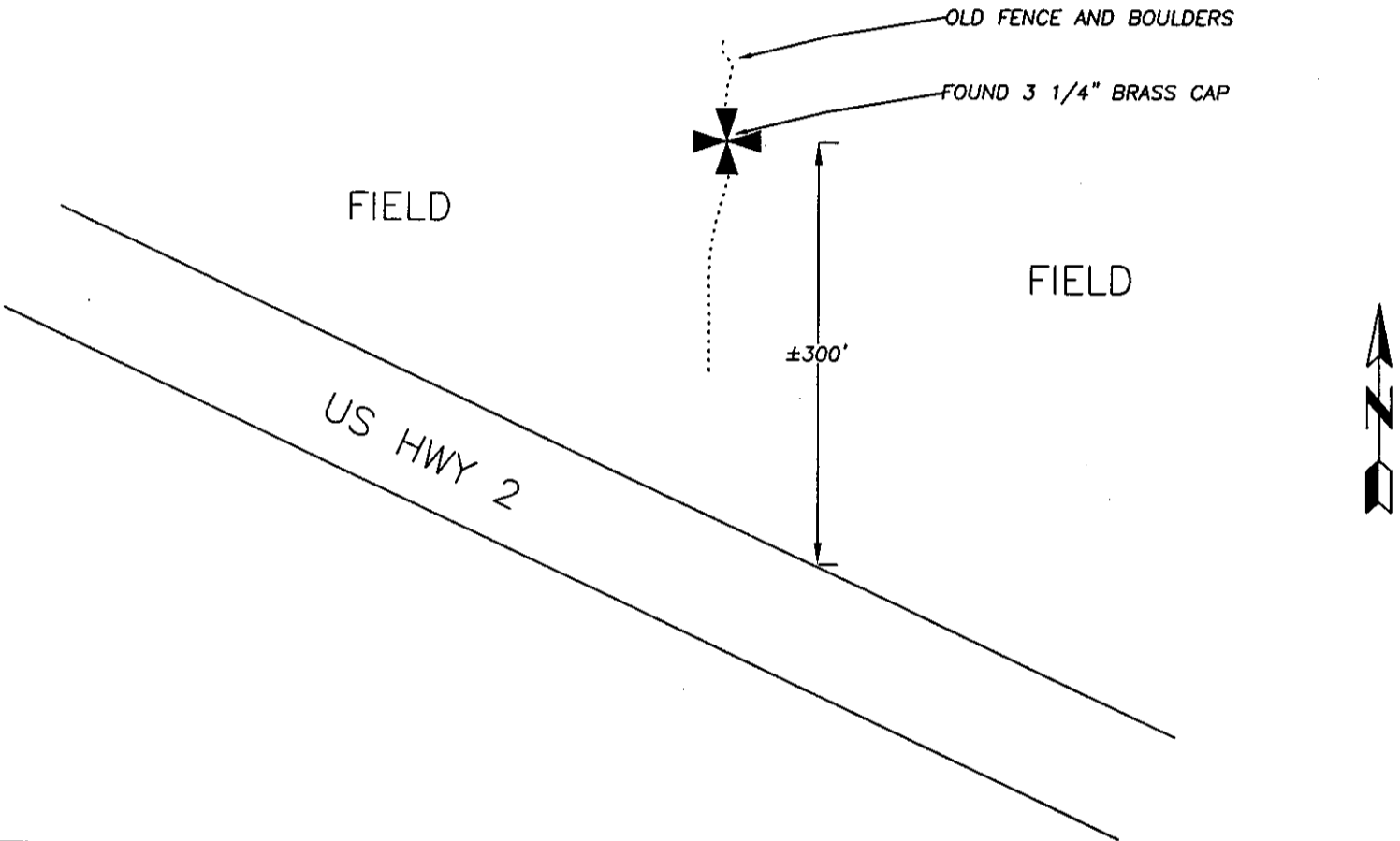
Corner Section Corner 22-23-26-27 T. 33 N R. 5 W P.M.M. Glacier County

RECORD: (1900 G.L.O.-C. Albee & W. Albee) Set a sandstone, 18x16x4 ins. 12 ins. in the ground, for Standard cor. of secs. 33 and 34, marked S.C. on N. face; with 3 grooves on E. and W. faces; and raise a mound of stone, 2 ft. base, 1 1/2 ft. high, S. of cor. Pits impracticable

SUBSEQUENT RECORD: None found.

EVIDENCE FOUND: Found the brass cap marked as shown in the sketch.

PERPETUATION: None.



SKETCH OF CORNER



**CERTIFICATION**

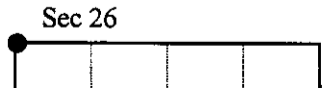
I, Gerald McCarthy  
 certify the information shown herein is true and correct.  
*Gerald McCarthy*  
 Signature Ground Party Chief

I, Ronald D. Milam  
 certify that this Corner Record correctly represents work performed by me or under my direction in compliance with the "Corner Recordation Act" (70-22-101, et seq., M.C.A.)  
*Ronald D. Milam*  
 Signature of Surveyor & Seal

Date: 1-16-01 Reg. No. 9007

Employer: DJ&A, P. C.

Office of Clerk and Recorder, County of Glacier. This "corner



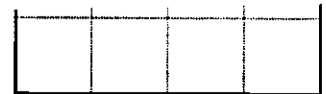
r  
v  
b

STATE OF MONTANA GLACIER COUNTY  
 RECORDED: 02/05/2001 10:45 MISC FILED  
 SYLVIA BERKRAM CLERK AND RECORDER BY:

*Sylvia Berkram*  
 County Official

DOC #: 248547  
 FEE: \$0.00

Cross Index No. R-17 T. 33N R. 5W PMM



● - corner this sheet