

INSTRUCTIONS

1. and/or subsequent record used to evaluate the corner position.
2. Description of evidence found, note discrepancies in the record, state method of establishing lost or obliterated corners.
3. Description of monument and accessories set to perpetuate the corner position.
4. Sketch of corner, show all pertinent data which can best be shown in a sketch example, corner marking, topography ties, position of accessories, etc.
5. Certification must be signed and sealed by Land Surveyor registered in the State of Montana.
6. Fill in Cross Index & Section Diagram at bottom of sheet.

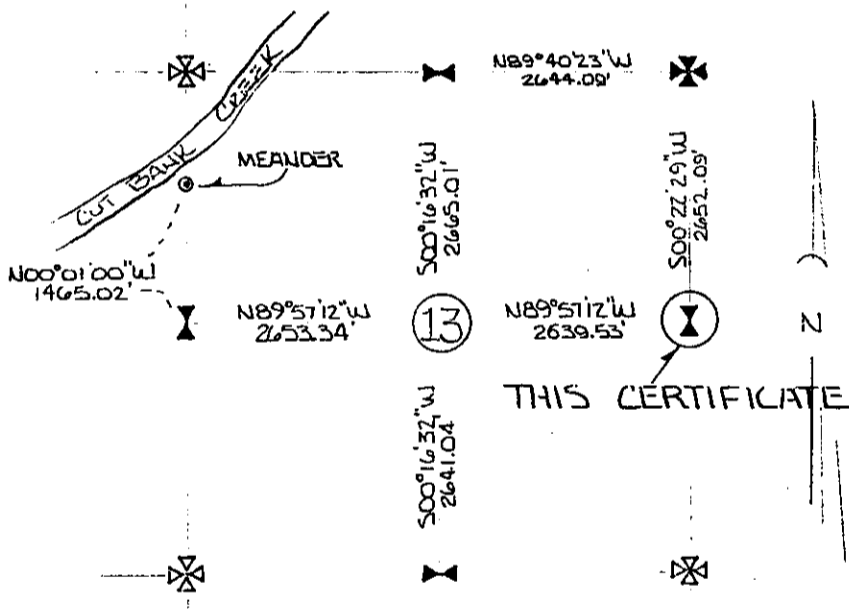
899

CERTIFIED CORNER RECORDATION

Corner EAST 1/4 - SEC. 13 T. 33N R. 6W P.M.M. GLACIER County

AT THE EAST 1/4 CORNER OF SECTION 13, WE FIND A FENCE INTERSECTION WITH FENCES RUNNING NORTH, SOUTH, AND WEST FROM THE LOCATION, AND A BRASS CAP MONUMENT SET IN 1936 BY THE GENERAL LAND OFFICE. THE MONUMENT IS FOUND TO BE SET FIRMLY, AND PROTRUDING APPROX. 4" ABOVE GROUND SURFACE.

NOTHING MORE IS DONE TO PERPETUATE THE LOCATION OF THIS MONUMENT.



NOTE: THE ORIGINAL NOTES WERE NOT OBTAINED FOR THIS SURVEY.

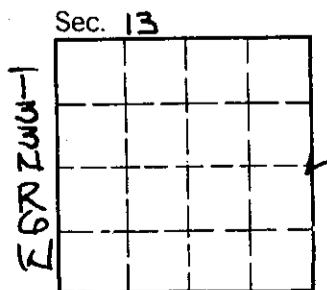
CERTIFICATION
 I, TODD POCOCK
 certify the information shown herein is true and correct.
Todd Pocock
 Signature Ground Party Chief
 I, THOMAS L. RUSSETT
 certify that this Corner Record correctly represents work performed by me or under my direction in compliance with the "Corner Recordation Act" (70-22-101, et seq., M.C.A.)
Thomas L. Russett
 Signature of Surveyor & Seal
 Date: 7/16/87 Reg. No. B238
 Employer: TRIANGLE ENGINEERING

SKETCH OF CORNER

Office of Clerk and Recorder, County of _____ . This "corner record" was filed for record on _____ was noted on the cross-index plat and is assigned page No. _____ , in book No. _____

County Official

Cross Index No. L-25 T. 33 R. 6 P.M.M.



• - corner this sheet