

INSTRUCTIONS

1. Original and/or subsequent record used to evaluate the corner position.
2. Description of evidence found, note discrepancies in the record, state method of establishing lost or obliterated corners.
3. Description of monument and accessories set to perpetuate the corner position.
4. Sketch of corner, show all pertinent data which can best be shown in a sketch example, corner marking, topography ties, position of accessories, etc.
5. Certification must be signed and sealed by Land Surveyor registered in the State of Montana.
6. Fill in Cross Index & Section Diagram at bottom of sheet.

CERTIFIED CORNER RECORDATION

Corner $\frac{1}{4}$ $\frac{10}{15}$ T. 32N R. R34W P.M.M. Lincoln County

I. 1903 GLO Record: Set a limestone, 20x9x6in., 15ins. in the ground, for $\frac{1}{4}$ sec.cor., mkd. $\frac{1}{4}$ on N. face.

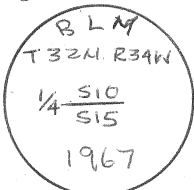
from which:

A tamarack, 15ins. diam., bears N.46°E., 17 lks. dist., mkd. $\frac{1}{4}$ S10 BT.
 A fir, 16ins. diam., bears S.61°W., 13 lks. dist., mkd. $\frac{1}{4}$ S15 BT.

1967 BLM Remonumation: The $\frac{1}{4}$ cor. of secs. 10 and 15, monumented with a limestone, 20x9x6ins., loosley set, mkd. $\frac{1}{4}$ on the N. face, and witnessed by the remains of the original bearing trees.

At the corner point:

Set an iron post, 30ins. long, 2 $\frac{1}{2}$ in. diam., 24ins. in the ground, with brass cap mkd.



from which the original bearing trees:

A tamarack stump, 20ins. diam., bears N.46°E., 17lks. dist., no visible marks. (Record)
 A fir stump, 21ins. diam., bears S.61°W., 13 lks. dist., mkd. $\frac{1}{4}$ (Record)

The new bearing trees:

A fir, 14ins. diam., bears S.36 $\frac{1}{2}$ °W., 58 lks. dist., mkd. $\frac{1}{4}$ S15 BT.
 A larch, 6in. diam., bears N.49°W., 17 lks. dist., mkd. $\frac{1}{4}$ S10 BT.

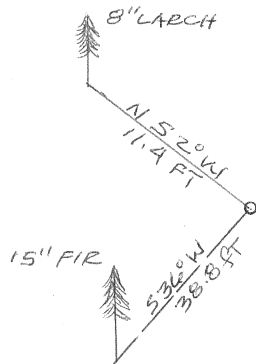
Bury the original stone alongside iron post.

II. I find a BLM brass cap marked as shown above.

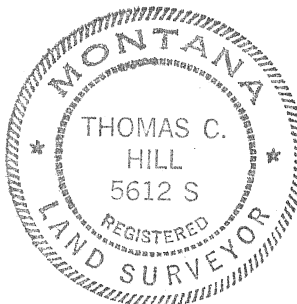
from which:

A larch, 8ins. diam., bears N.52°W., 11.4 ft. dist., healed face.
 A fir, 15in. diam., bears S.36°W., 38.8 ft. dist., scribing visible.

III. I set a 6 ft. carsonite post 1 ft. n. of corner, painted red bands around all BT's and attached new BT signs.



SKETCH OF CORNER



CERTIFICATION

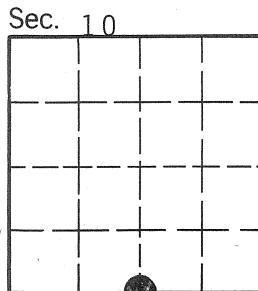
I, Thomas Hommel
 certify the information shown herein is true and correct.
 Signature Ground Party Chief

I, Thomas C. Hill
 certify that this Corner Record correctly represents work performed by me or under my direction in compliance with the "Corner Recordation Act" (70-22-101, et seq., M.C.A.)
 Signature of Surveyor & Seal

Date 6/28/84 Reg. No. 5612S
 Employer: USFS

Office of Clerk and Recorder, County of Lincoln. This "corner record" was filed for record on July 12, 1984 was noted on the cross-index plat and is assigned page No. 2703, in book No. _____

Janet B. S. Siegel by Joannis Dennis
 County Official Deputy



• - corner this sheet