

INSTRUCTIONS

1. Original and/or subsequent record used to evaluate the corner position.
2. Description of evidence found, note discrepancies in the record, state method of establishing lost or obliterated corners.
3. Description of monument and accessories set to perpetuate the corner position.
4. Sketch or corner, show all pertinent data which can best be shown in a sketch example, corner marking topography ties, position of accessories, etc.
5. Certificate must be signed and sealed by Registered Land Surveyor in State of Montana
6. Fill in Cross Index and Section Diagram at bottom of sheet.

CERTIFIED CORNER RECORDATION

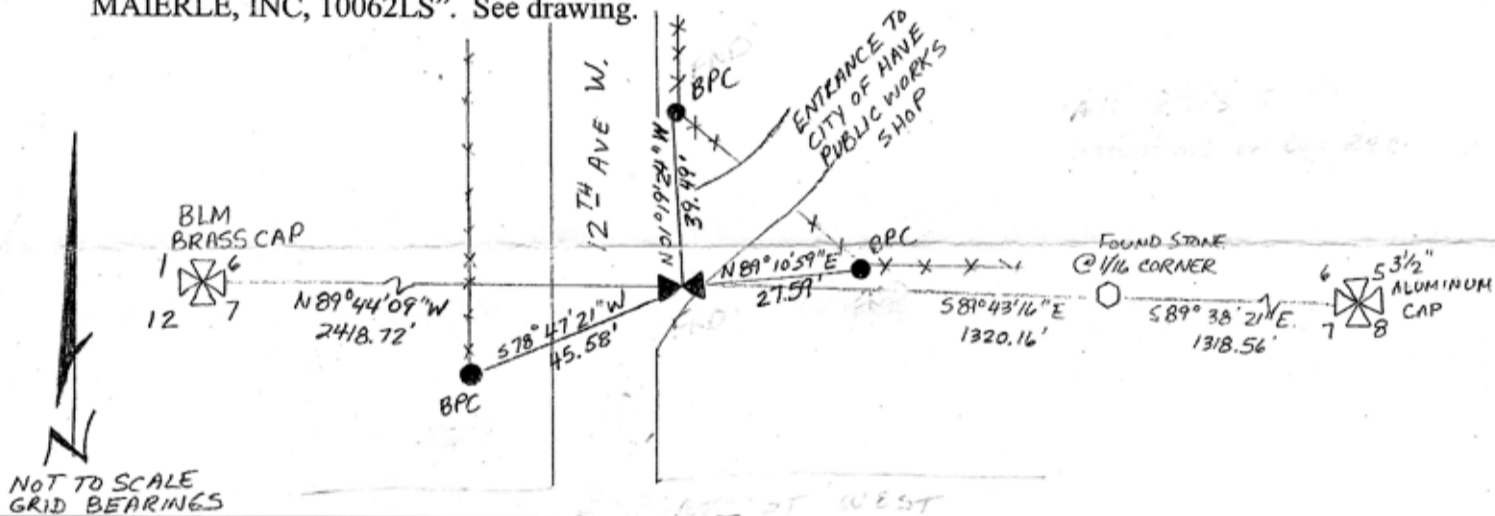
Corner ¼ Corner of Sections 6 & 7 T. 32N R. 16E P.M.M. Hill County

1894 GLO ORIGINAL SURVEY
At 40.00 chains, Henry B. Davis, Deputy Surveyor, set a sandstone, 12x10x6 inches, 8 inches in the ground for the ¼ section corner, marked ¼ on the north face, dug pits 18x18x12 inches, East & West of stone, 5 ½ feet distant, and raised a mound of earth 1 ½ feet high, 3 ½ foot base, alongside.

1976 RANDOLPH HONEYBEAR DEVELOPMENT
James B. Spring, 1535 S, found brass pin in concrete at ¼ corner location.

1982 CERTIFIED CORNER RECORDATION, # 462538
Wayne W. Dean, 742ES, found pin set in concrete.

2003 MORRISON-MAIERLE, INC.
Field search found a bent ½" rebar set in concrete, as described. Distances match well with previous surveys and matches well with distance to 1/16 corner to the east and section corner to the east. I accept this monument as the ¼ corner. I remonumented the corner by drilling into the concrete monument and setting a 2" aluminum cap on a 5/8" rebar, stamped as shown below. To perpetuate the corner, I set three reference monuments, which are 1 ¾" blue plastic caps on 5/8" rebar, stamped "MORRISON-MAIERLE, INC, 10062LS". See drawing.



SKETCH OF CORNER

CERTIFICATION	
1. Margaret Stecker	certify the information shown here is true and correct.
<i>Margaret Stecker</i>	Signature of Ground Party Chief
1. Thomas M. Henesh	certify that this Corner Record correctly represents the work performed by me or under my direction in compliance with the Montana Surveying Act (MCA 22-101, et seq.).
<i>Thomas M. Henesh</i>	Signature of Surveyor & Seal
Date: 2/10/04	
Employer: Morrison-Maierle	



Sec. 6

551566
Office of Clerk and Recorder, County of Hill This "corner
551566 Fee: \$ 0.00 Bk Pg _____, 2004,
HILL COUNTY Filed 02/12/2004 At 09:15 AM _____, in
DIANE E. MELLEM, Clk & Rdr By *Cawlyn Patrick*
Return to: MORRISON-MAIERLE _____ Official

Cross Index No. E-3 T. 32N R. 16E PMM