

INSTRUCTIONS

1. Original and/or subsequent record used to evaluate the corner position.
2. Description of evidence found, note discrepancies in the record, state method of establishing lost or obliterated corners.
3. Description of monument and accessories set to perpetuate the corner position.
4. Sketch of corner, show all pertinent data which can best be shown in a sketch example, corner marking, topography ties, position of accessories, etc.
5. Certification must be signed and sealed by Land Surveyor registered in the State of Montana.
6. Fill in Cross Index & Section Diagram at bottom of sheet.

CERTIFIED CORNER RECORDATION

Corner Sections 19 & 30 5 East T. 32 North R. 6 East P.M.M. Liberty County
Sections 24 & 25

Record 1896 G.L.O. Survey (Joseph H. Heyer)

Set a quartzite stone, 16x12x6 ins. 11 ins. in the ground for Corner of Sections 19, 24, 25 and 30, marked with four notches on North and two notches on south edges, dig pits, 18x18x12 ins. in each Section 5 1/2 ft. dist.; and raise a mound of earth, 4 ft. base, 2 ft. high, West of Corner.

1980 - Certificate of Survey No. 101954

Certificate of Survey indicates Section Corner common to Sections 19 and 30, T. 32 N., R. 6 E., and Sections 24 and 25, T. 32 N., R. 5 E. was re-established.

Found 1990

Found 1/2 inch x 18 inch rebar with 1 1/2 inch aluminum cap marked as per diagram below.

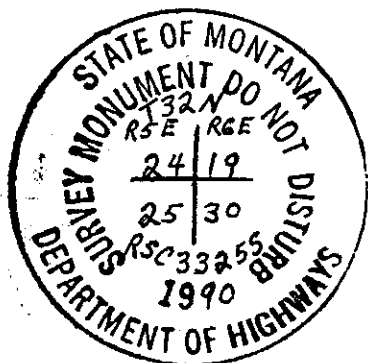
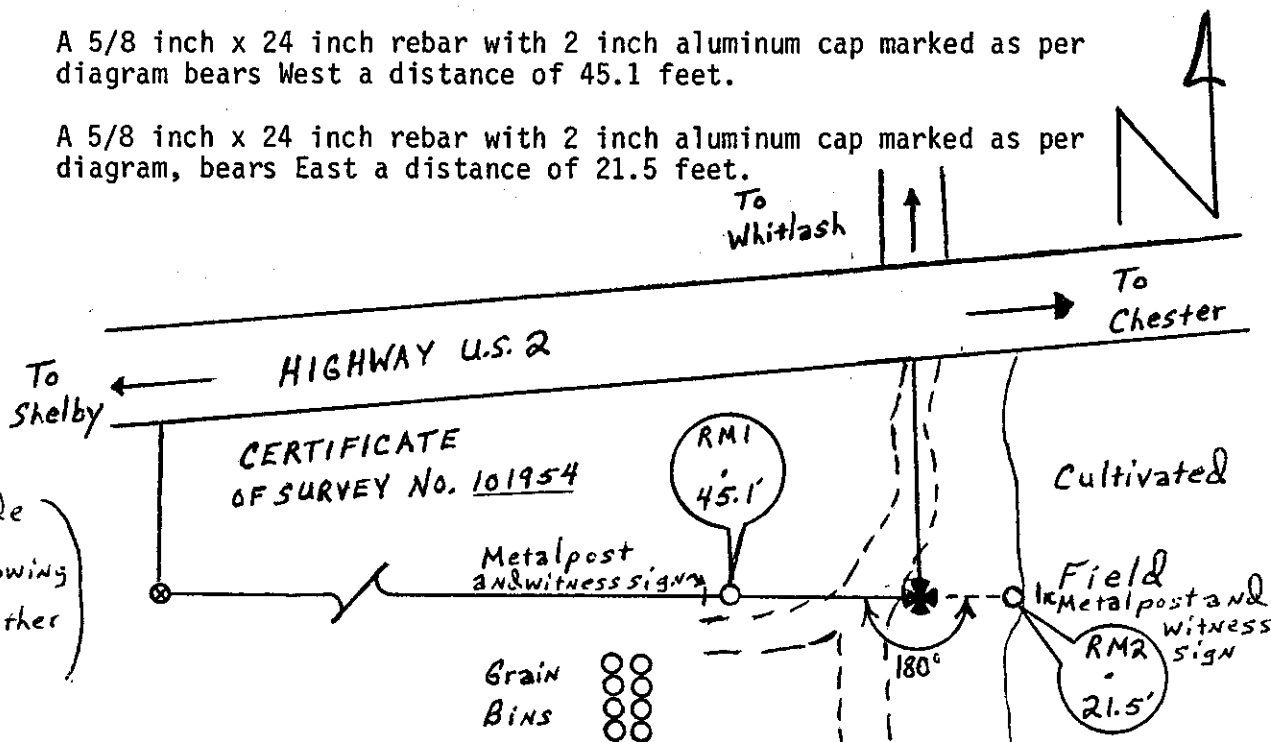
In place of found rebar and cap, set a 3 1/2 inch x 30 inch aluminum monument 36 inches in ground placed found 1/2 inch rebar with aluminum cap and 2 - 5/8 inch x 8 inch rebar inside post marked as per diagram below. From which:

A 5/8 inch x 24 inch rebar with 2 inch aluminum cap marked as per diagram bears West a distance of 45.1 feet.

A 5/8 inch x 24 inch rebar with 2 inch aluminum cap marked as per diagram, bears East a distance of 21.5 feet.

(Not to Scale)

(See Reverse Side For Sketch Showing Relationship To other Corners)



SKETCH OF CORNER

CERTIFICATION

I, Bryce Larsen
 certify the information shown herein is true and correct.

Bryce Larsen
 Signature Ground Party

I, Robert S. Custis
 certify that this Corner Record correctly represents work performed by me or under my direction in compliance with the "Corner Recordation Act" (70-22-101, et seq., M.C.A.).

Robert S. Custis
 Signature of Surveyor & Seal

Date: 8-16-90 Reg. No. 33255

Employer: MDOH

Sec. 19

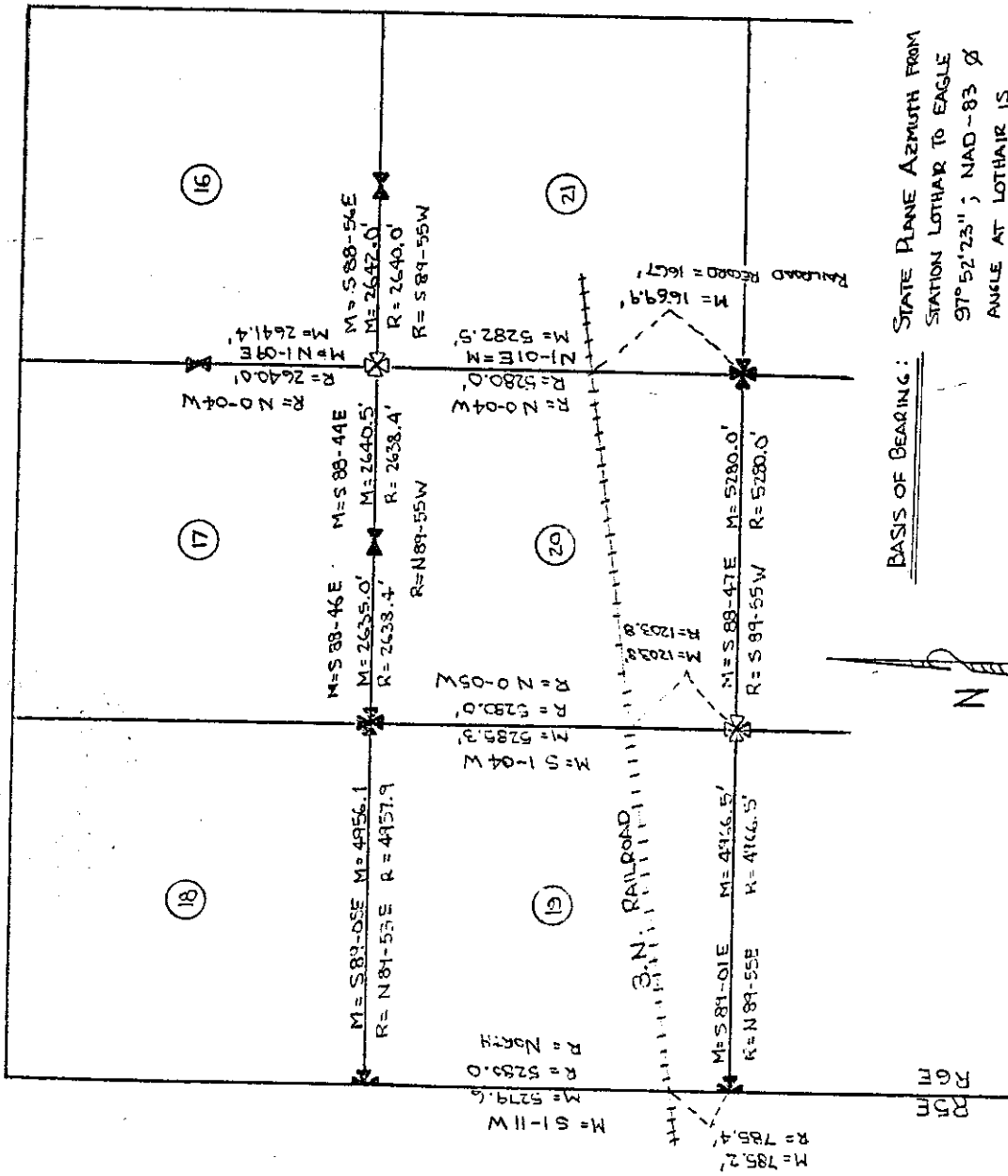
		19	

• - corner this sheet

Office of Clerk and Recorder, County of Liberty. This "corner record" was filed for record on August 23, 1990 was noted on the cross-index plat and is assigned page No. _____, in book No. _____

Maureen Cron, Deputy
 County Official

Cross Index No. R-I T. 32 N. R. 6 E. P.M.M.



BASIS OF BEARING: STATE PLANE AZIMUTH FROM STATION LOTHAIR TO EAGLE $97^{\circ}52'23''$; NAD-83 ϕ ANGLE AT LOTHAIR IS $-1^{\circ}16'34''$.

HORIZONTAL DATUM: ASSUMED COORDINATE SYSTEM (NOT ON NAD-83 DATUM)

\boxtimes = RE-ESTABLISHED MONUMENT NO SCALE
 \boxdot = FOUND MONUMENT
 (REFER TO CORNER RECALCULATIONS)
 (FOR SIZE AND TYPE OF FOUND MONUMENT)

INSTRUCTIONS

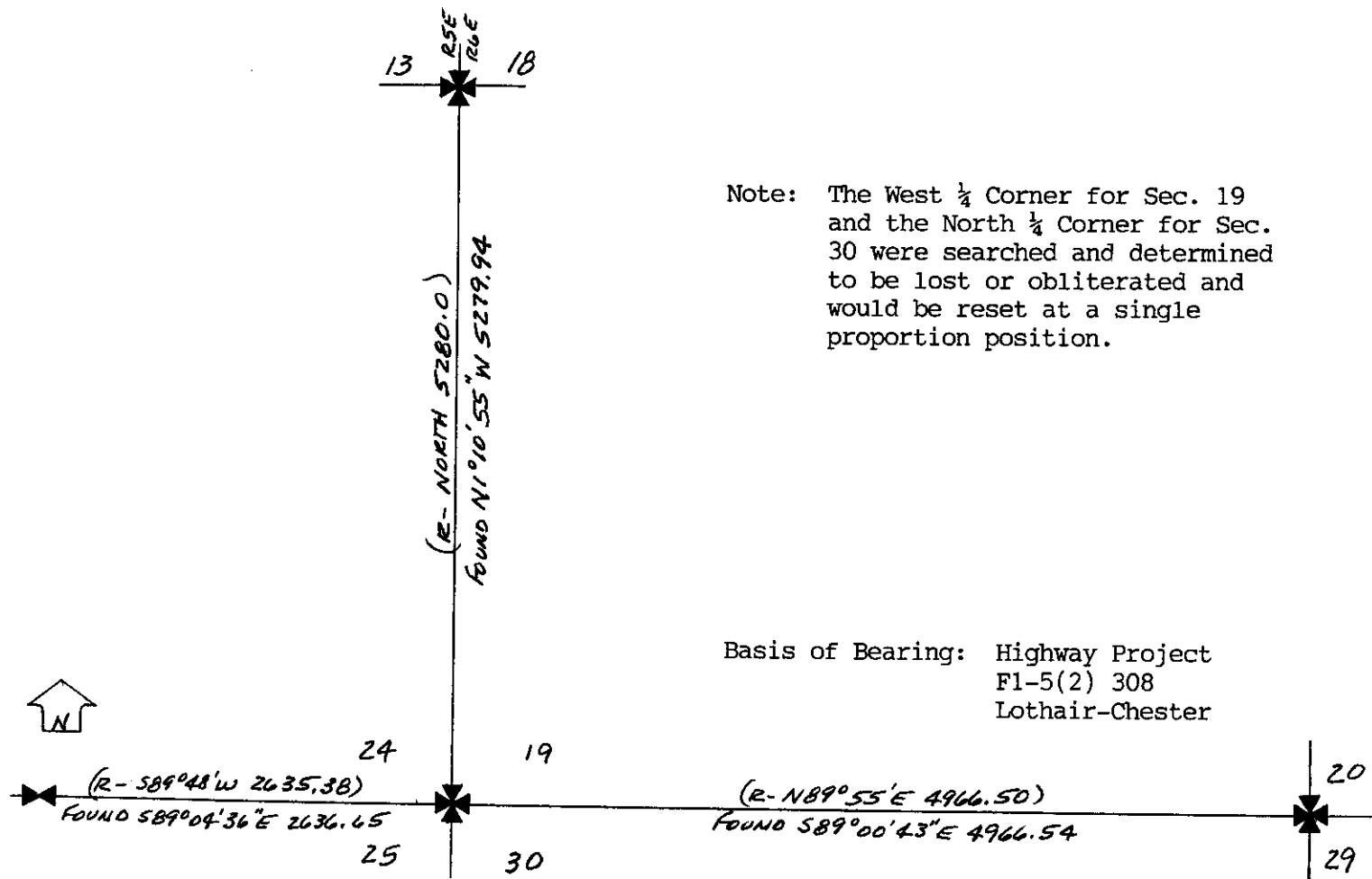
1. Original and/or subsequent record used to evaluate the corner position.
2. Description of evidence found, note discrepancies in the record, state method of establishing lost or obliterated corners.
3. Description of monument and accessories set to perpetuate the corner position.
4. Sketch of corner, show all pertinent data which can best be shown in a sketch example, corner marking, topography ties, position of accessories, etc.
5. Certification must be signed and sealed by Land Surveyor registered in the State of Montana.
6. Fill in Cross Index & Section Diagram at bottom of sheet.

CERTIFIED CORNER RECORDATION

Corner NW Cor. Sec. 30 T. 32N R. 6E P.M.M. Liberty County

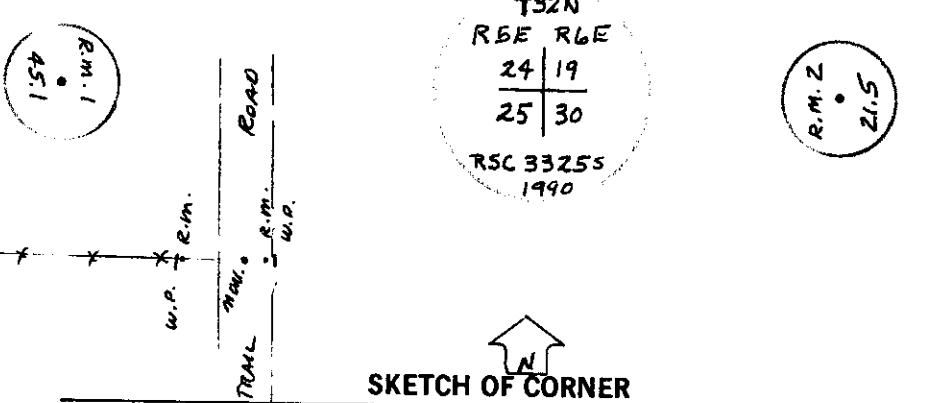
Record: 1897 GLO Survey - Set a quartzite stone, 16x12x6 ins., 11 ins. in the ground for Cor. of Secs. 19, 24, 25 and 30, marked with 4 notches on N. and 2 notches on S. edges, dig pits, 18x18x12 ins. in each Sec. 5 1/2 ft. dist. and raise a mound of earth, 4 ft. base, 2 ft. high, W. of Cor.

Found: 3 1/4" x 30" Aluminum, State of Montana monument, marked as shown, 37" in the ground. State of Montana 2" Aluminum cap, marked as shown, 21.5 ft. East and 45.1 ft. West. Witness posts with Survey Marker stickons by R. M. caps.



Note: The West 1/4 Corner for Sec. 19 and the North 1/4 Corner for Sec. 30 were searched and determined to be lost or obliterated and would be reset at a single proportion position.

Basis of Bearing: Highway Project F1-5(2) 308 Lothair-Chester



CERTIFICATION

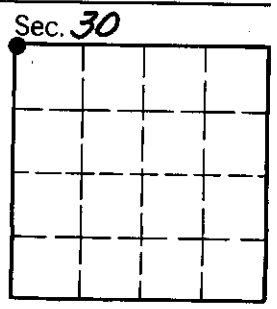
I, Harry C. Strong
 certify the information shown herein is true and correct.
Harry C. Strong
 Signature Ground Party Chief

I, Harry C. Strong
 certify that this Corner Record correctly represents work performed by me or under my direction in compliance with the "Corner Recordation Act" (70-22-101, et seq., M.C.A.)
Harry C. Strong
 Signature of Surveyor & Seal

Date: 12-10-90 Reg. No. 3103S
 Employer: Professional Services
Contract with the MDXH

Office of Clerk and Recorder, County of Liberty. This "corner record" was filed for record on June 24, 1991 was noted on the cross-index plat and is assigned page No. _____, in book No. _____

Maurice Cison, Deputy
County Official



Cross Index No. R1 T. 32N R. 6E P.M.M.

• - corner this sheet