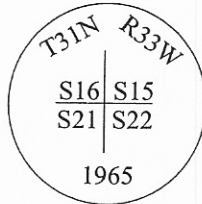


## CERTIFIED CORNER RECORDATION

**Corner**    **SW Sec. Corner**    **Sec. 15**    **T. 31N**    **R. 33W**    **P.M, MT**    **Lincoln**    **Count**

I. 1893 G.L.O. original record by D. Mumbrue: Set a slatestone, 20x12x3 ins., 15 ins. in the ground, for cor. of secs. 15, 16, 21 and 22, mkd. with 3 notches on S. and E. edges, and established four bearing trees.

1965 B.L.M. remonumentation record by D. Lindenberg: The corner of secs. 15, 16, 21 and 22, monumented with a slate stone, firmly set, and witnessed by the remains of two of the original bearing trees. At the corner point, set an iron post, 30 ins. long, 2 1/2 ins. diam., 26 ins. in the ground, with brass cap marked mkd. as shown.



Established four new bearing trees and bury the original stone alongside the iron post.

II. Found a 2 1/2 in. diam. iron pipe, protruding 3 ins. above the ground, firmly set, with a 3 1/4 in. dia. brass cap, mkd. as shown and witnessed by the remains of the B.L.M. and the 1988 bearing trees.

from which:

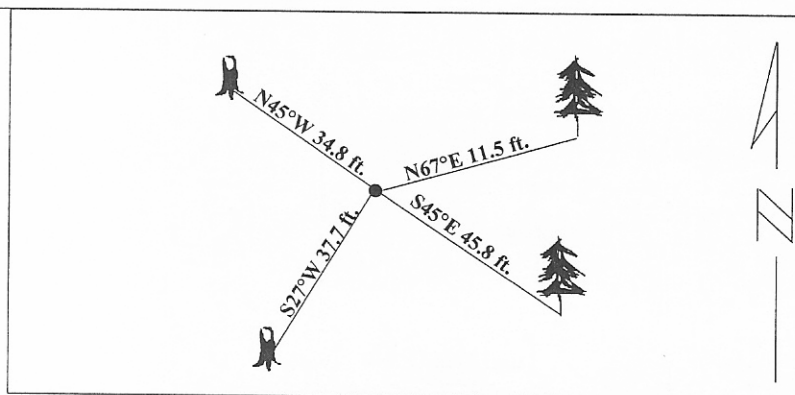
- A pine, 20 ins. diam., bears N67°E, 11.5 ft. dist., with visible scribe. (BLM-record)
- A larch, 24 ins. diam., bears S45°E, 45.8 ft. dist., scribe overgrown. (BLM-record)
- A high stump, 7 ins. diam., bears S27°W, 37.7 ft. dist., with visible scribe. (1988-record)
- A high stump, 7 ins. diam., bears N45°W, 34.8 ft. dist., with visible scribe. (BLM-record)

III. Established two new bearing trees:

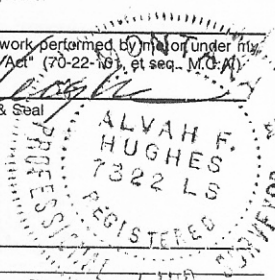
- A fir, 12 ins. diam., bears S32°W, 105.1 ft. dist., mkd. "T31N R33W S21 BT".
- A fir, 9 ins. diam., bears N50°W, 59.7 ft. dist., mkd. "T31N R33W S16 BT".

Painted red bands around the bearing trees and attached Land Survey Monument and Bearing Tree signs.

Magnetic Declination: 20° East



<b>CERTIFICATION</b>	
I. <b>Mark Federman</b> certify the information shown herein is true and correct.	
_____ Signature Ground Party Chief	
I, <b>Alvah F. Hughes</b> certify that this Corner Record correctly represents work performed by me or under my direction in compliance with the "Corner Recordation Act" (70-22-10), et seq., M.C.A.	
_____ Signature of Surveyor & Seal	
Date:	<b>6/27/95</b>
Reg. No.:	<b>7322LS</b>
Employer:	<b>U.S. FOREST SERVICE</b>



Office of Clerk and Recorder, County of Lincoln. This "corner record" was filed for record on 10-6-98 was noted on the cross-index plat and is assigned page No. 1021.7 in book No. \_\_\_\_\_

Coral M. Cummings By DUB  
County Official



● - corner this sheet

Cross Index No.    **N-13**    **T. 31N**    **R. 33W**    **PMM**