

INSTRUCTIONS

1. Original and/or subsequent record used to evaluate the corner position.
2. Description of evidence found, note discrepancies in the record, state method of establishing lost or obliterated corners.
3. Description of monument and accessories set to perpetuate the corner position.
4. Sketch or corner, show all pertinent data which can best be shown in a sketch example, corner marking, topography ties, position of accessories, etc.
5. Certification must be signed and sealed by Registered Land Surveyor in State of Montana.
6. Fill in Cross Index & Section Diagram at bottom of sheet.

CERTIFIED CORNER RECORDATION

Corner S31 | S32 S6 | S5 T. 32N R. 33W P.M.M. Lincoln County
 Date of work: November, 1982

I. 1967 BLM Record; Set a 2 1/4" X 30" iron pipe 24" in the ground with a brass cap marked as shown.
 From which:

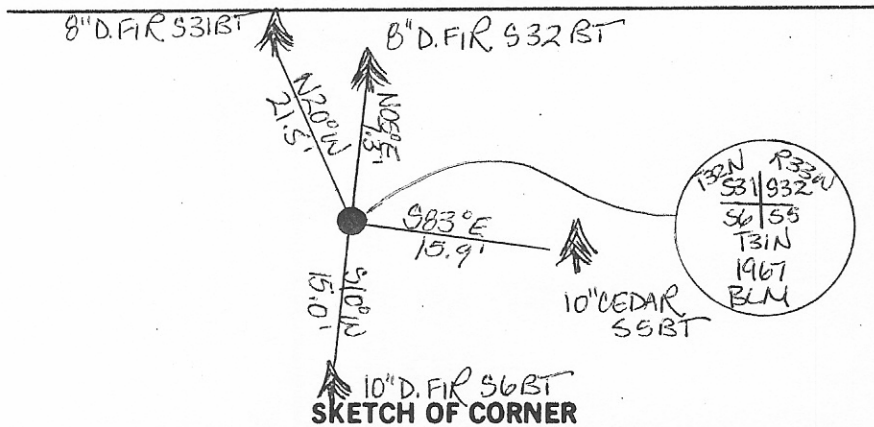
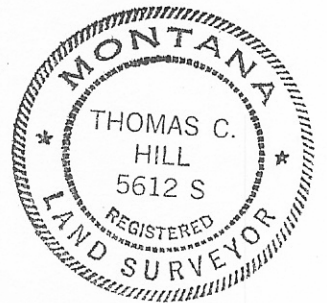
- A 7" D. fir bears N08°E, 11 links, scribed S32BT.
- A 7" Cedar bears S81 1/4°E, 24 links, scribed S5BT.
- An 8" D. fir bears S07°W, 22 links, scribed S6BT.
- A 7" D. fir bears N23 1/4°W, 32 links, scribed S31BT.

This corner is common to Cor. #4 HES #411.

II. Found a 2 1/2" BLM iron pipe 8" out of ground with 3" brass cap marked as shown.
 From which:

- A 10" Cedar bears S83°E, 15.9 ft., scribing visible.
- A 10" D. fir bears S10°W, 15.0 ft., healed face.
- An 8" D. fir bears N20°W, 21.5 ft., scribing visible.
- An 8" D. fir bears N05°E, 7.3 ft., healed face.

III. Painted red bands around BTs.



CERTIFICATION
 I, Kevin A. Todd
 certify the information shown herein is true and correct.
Kevin A. Todd
 Signature Ground Party Chief
 I, Thomas C. Hill
 certify that this Corner Record correctly represents work performed by me or under by direction in compliance with the "Corner Recordation Act" (70-22-101, et seq., M.D.A.)
Thomas C. Hill
 Signature of Surveyor & Seal
 Date: 2-2-83 Reg. No. 5612-S
 USFS
 Employer: _____

Office of Clerk and Recorder, County of Lincoln. This "corner record" was filed for record on the February 23 day of 1983 was noted on the cross-index plat and is assigned page No. 2158, in book No. _____
Janet B. Siegel by Betty L. Conces, deputy
 County Official

