

INSTRUCTIONS

- 1. Original and/or subsequent record used to evaluate the corner position.
2. Description of evidence found, note discrepancies in the record, state method of establishing lost or obliterated corners.
3. Description of monument and accessories set to perpetuate the corner position.
4. Sketch of corner, show all pertinent data which can best be shown in a sketch example, corner marking, topography ties, position of accessories, etc.
5. Certification must be signed and sealed by Land Surveyor registered in the State of Montana.
6. Fill in Cross Index & Section Diagram at bottom of sheet.

CERTIFIED CORNER RECORDATION

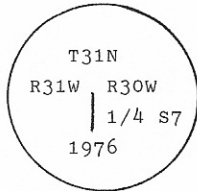
Corner 1/4 Cor. of Secs. 7 only T. 31 N., R. 30 W., Lincoln County P.M.M.

I. 1901 G.L.O. record by Abram L. Jaqueth: "Set a limestone 18x14x7 ins. 12 ins. in the ground, for 1/4 sec. cor. for Sec.7; marked 1/4 on W. face; from which

A fir, 10 ins. diam., bears N44°05'E, 12 lks. dist., marked 1/4 S7 BT.
A fir, 10 ins. diam., bears S30°15'E, 9 lks. dist., marked 1/4 S7 BT.

No official 1976 B.L.M. record found.

1967 U.S.F.S. Corner Record (Search) card by Joseph E. French: "No corner monument found. Found fir stump, 16" diam., bears N44°05'E, 12 lks. dist., mkd. BT. Set iron post, 30" long, 24" in ground with brass cap mkd.



from which

A 10" larch, bears S47°E, 62 lks. dist., mkd. 1/4 S7 BT.
A 8" fir, bears S11 1/2° 52 lks. dist., mkd. X BT.

Collar mound of stone, 3' diam."

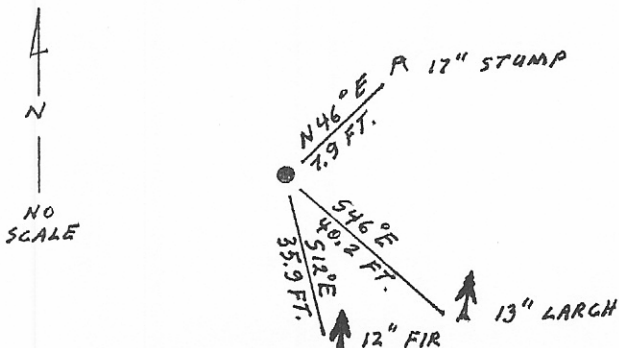
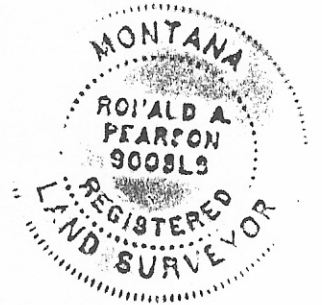
II. Found a 2 1/2 in. diam. iron pipe, 3 ins. out of ground in mound of stone, with 3 1/4 ins. diam., B.L.M. brass cap marked as shown above; from which

A stump, 17 ins. diam., bears N46°E, 7.9 ft. (12 lks.) dist., visible scribe. (G.L.O.)
A larch, 13 ins. diam., bears S46°E, 40.2 ft. (61 lks.) dist., marked 1/4 S7 BT.
A fir, 12 ins. diam., bears S12°E, 35.9 ft. (54 lks.) dist., healed face.

III. Painted red bands around the bearing trees and attached Land Survey Monument and Bearing Tree signs.

Set a 6 ft. galvanized steel guard post with Land Survey Marker and Property Boundary decals, North, 3 ft.

Magnetic Declination: 20° East



SKETCH OF CORNER

CERTIFICATION

I. Raymond A. Pederson certify the information shown herein is true and correct.

Signature Ground Party Chief

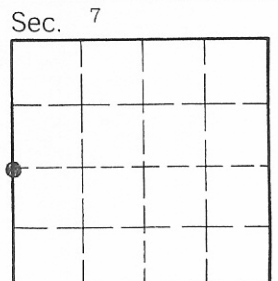
I. Ronald A. Pearson certify that this Corner Record correctly represents work performed by me or under my direction in compliance with the "Corner Recordation Act" (70-22-101, et seq., M.C.A.)

Signature of Surveyor & Seal

Date: 11/30/92 Reg. No. 9008 LS

Employer: U.S. FOREST SERVICE

Office of Clerk and Recorder, County of Lincoln. This "corner record" was filed for record on 1-4-93 was noted on the cross-index plat and is assigned page No. 5240, in book No. Coral M. Cummings by EB County Official



• - corner this sheet

G-1 Cross Index No. T. 31 N. 30 W. R. PMM