

CERTIFIED CORNER RECORDATION

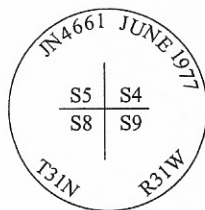
Corner SW SECTION **Sec.** 4 **T.** 31N **R.** 31W **P.M., MT** **Lincoln** **County**

I. 1901 original G.L.O. Record by Abram L. Jaqueth: Set a cottonwood post 3 ft. long, 5 ins. square, 24 ins. in the ground, for the corner of secs. 4, 5, 8 and 9, marked T31N S4 on NE, R31W S9 on SE, S8 on SW and S5 on NW faces, with 5 notches on S and 4 notches on E edges, from which:

- A cottonwood 10 ins. diam., bears N 11°E, 33 lks. dist., marked T31N R31W S4 BT.
- A spruce 30 ins. diam., bears S 65°15'E, 70 lks. dist., marked T31N R31W S9 BT.
- A spruce 18 ins. diam., bears S 8°W, 40 lks. dist., marked T31N R31W S8 BT.
- A cottonwood 10 ins. diam., bears N 10°W, 20 lks. dist., marked T31N R31W S5 BT.

1977 Certificate of Survey #415 filed in Lincoln County Courthouse by J. H. Ninneman #4661-S: Set BC monument and two BT's scribed and posted, set location poster.

II. Found a 2 1/2 in. diam. iron pipe, 8 in. above ground, firmly set, with a 3 1/4 in. brass cap mkd. as shown:

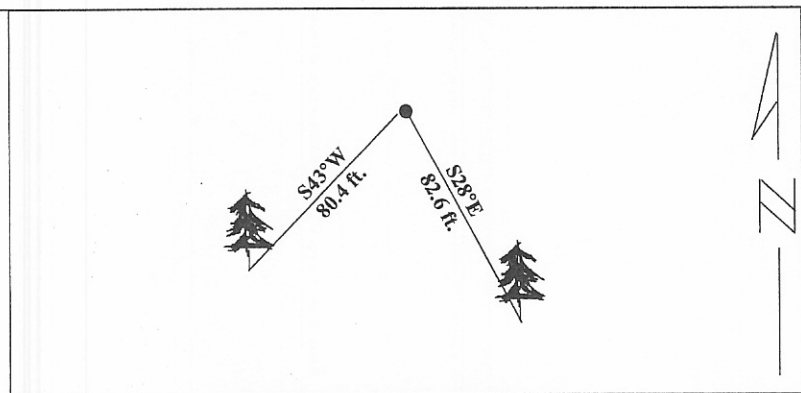


from which:

- A aspen, 13 ins. diam., bears S28°E, 82.6 ft. dist., with visible scribing.
- A aspen, 12 ins. diam., bears S43°W, 80.4 ft. dist., with visible scribing.

III. Painted red bands around the bearing trees and attached Land Survey Monument and Bearing Tree signs.

Magnetic Declination: 20° East



SKETCH OF CORNER

CERTIFICATION
I. <u>Rex O. Rice</u> certify the information shown herein is true and correct.
<i>Rex O. Rice</i> Signature Ground Party Chief
I. <u>Alvah F. Hughes</u> certify that this Corner Record correctly represents work performed by me or under my direction in compliance with the "Corner Recordation Act" (70-22-101, et seq., M.C.A.)
<i>Alvah F. Hughes</i> Signature of Surveyor & Seal
Date: <u>01/24/96</u>
Reg. No.: <u>7322LS</u>
Employer: <u>U.S. FOREST SERVICE</u>

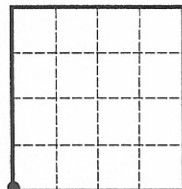
Office of Clerk and Recorder, County of LINCOLN. This "corner record" was filed for record on JULY 29, 1997 was noted on the cross-index plat and is assigned page No. 9722 in book No. _____

CORAL M. CUMMINGS

County Official

By DUB

Sec. 4



• - corner this sheet