

**CERTIFIED LAND CORNER RECORDATION**

**DESCRIPTION OF CORNER EVIDENCE FOUND, AND ORIGINAL RECORD (IF KNOWN)**

This Section corner common to Sections 22, 23, 26 and 27 of Township 30 North, Range 31 West of the M.P.M. Lincoln County, Montana was relocated by the Bureau of Land Management with a 1" x 6' pipe with a brass cap in one end on top. The brass cap was in the road and with road construction the brass cap was pulled away from the pipe which still is below the surface of the road level approximately 6 inches.

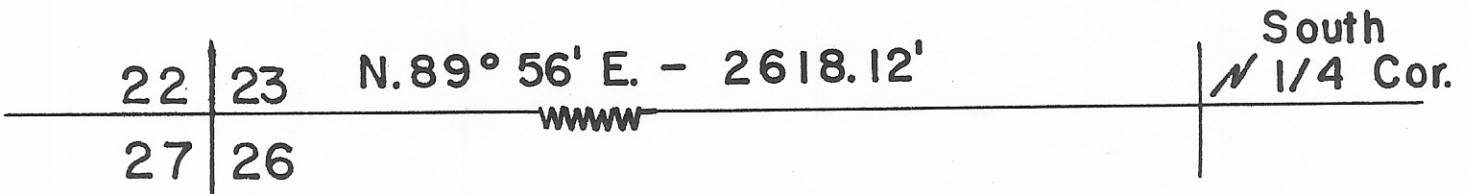
**DESCRIPTION OF MONUMENT AND ACCESSORIES ESTABLISHED TO PERPETUATE THE ORIGINAL LOCATION OF THIS CORNER:**

Date of work: May 20th.  
1967

From the one inch by six foot pipe which is in the ground for the common corner to Sections 22, 23, 26 and 27 of Township 30 North, Range 31 West of the M.P.M. Lincoln County, Montana bears a B.T. 9" Pine South 23° 00' West a distance of 71.95 feet. A red head in a power pole which bears North 37° 35' East a distance of 35.38 feet and a steel rebar 5/8 inch by 24 inches driven flush with the ground bears North 0° 02' West a distance of 30.00 feet from the afore said Section Corner.

**SKETCH, WITH COURSE AND DISTANCE TO ADJACENT CORNERS IF DETERMINED IN THIS SURVEY. (MAY SKETCH OR PASTE REPRODUCTION ON REVERSE SIDE.)**

**Sec. 23, T. 30N. , R. 31 W.**



Surveyor's Seal

I, .....  
certify that the information shown herein is true and correct.

.....  
Signature of Ground Party Chief

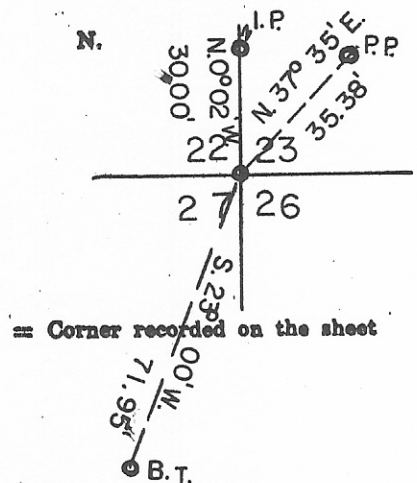
I, Donald D. Dahl  
certify that I have carefully performed or reviewed the work done on the diagrammed corner as reported on this recordation form and approve the same.

Donald D. Dahl  
Signature of Surveyor

798-S.

.....  
Registration Number

**DIAGRAM OF CORNER:**



Office of Clerk and Recorder, County of Lincoln County, State of Montana

This "corner record" was filed for record on the 5th day of October 1967, was noted on the cross-index plat and is

assigned page No. 81, in book No. 1

Eleanor L. Vaughn, By Irene Waters Deputy  
County Official