

### CERTIFIED CORNER RECORDATION

NW CORNER SECTION 6 T. 30 N. R. 31 E P.M.M. Phillips COUNTY

#### ORIGINAL RECORD:

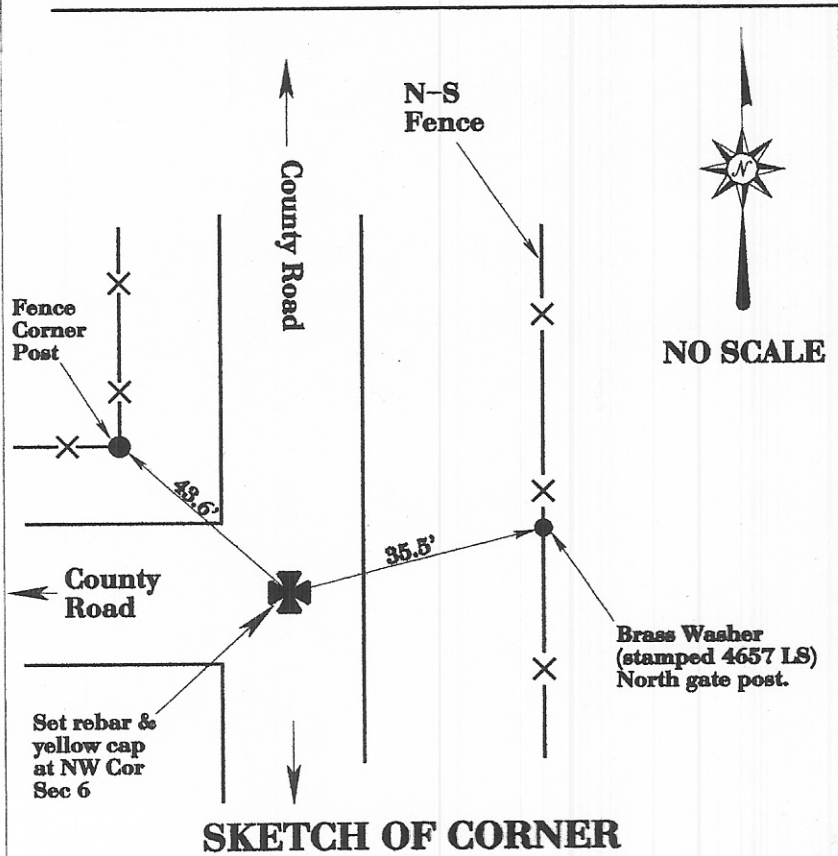
1891 G.L.O. Scribed Stone.

#### EVIDENCE FOUND:

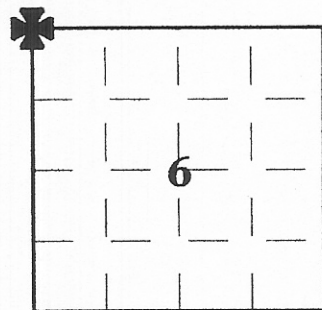
None found, at intersection of County Roads.

#### PERPETUATION and/or MONUMENT SET:

Set 5/8" rebar with yellow plastic cap, stamped 4656 LS at 0.8' deep in County Road.



#### CERTIFICATION



✠ : corner this sheet

I, MICHAEL C. ZANCANELLA, a duly Licensed Professional Land Surveyor in the State of Montana, certify that this Corner Record represents work prepared by me or under my direction in compliance with the "Corner Recordation Act" (70-22-101, et seq., M.C.A.).

MICHAEL C. ZANCANELLA  
 No. 8797-LS  
 LICENSED PROFESSIONAL LAND SURVEYOR

Signature of Surveyor & Seal

Date: 11/12/2005 Reg. No. 8797 LS

Employer: Joe Kehl & Associates, Inc.

#### SKETCH OF CORNER

Office of the Clerk and Recorder, County of Phillips 333801 B-CR P-0915  
 PHILLIPS COUNTY Fee \$ .00  
 This 'Corner Record' was filed for record on 01/12/2006 At 02:45 PM  
 was noted on the cross-index plat and is in Book No. \_\_\_\_\_  
 in Book No. \_\_\_\_\_  
 County Official \_\_\_\_\_  
 Cross Index No. A-1, T. \_\_\_\_\_, R. \_\_\_\_\_, P.M.M.