

C.R. # 249

INSTRUCTIONS

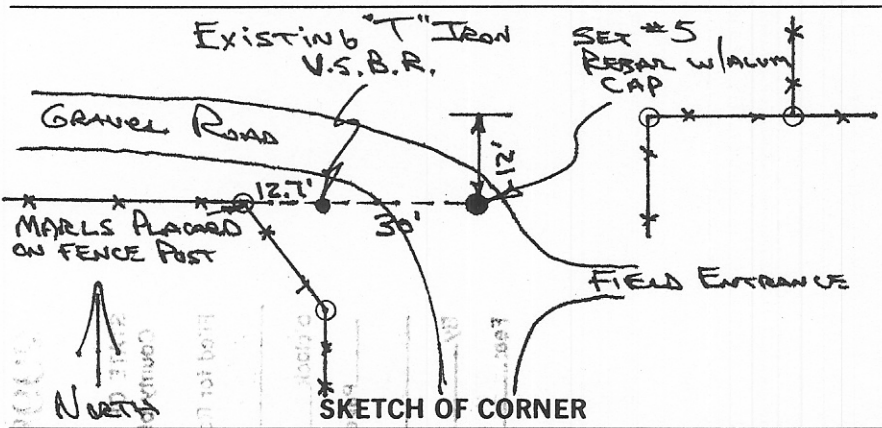
1. Original and/or subsequent record used to evaluate the corner position.
2. Description of evidence found, note discrepancies in the record, state method of establishing lost or obliterated corners.
3. Description of monument and accessories set to perpetuate the corner position.
4. Sketch of corner, show all pertinent data which can best be shown in a sketch example, corner marking, topography ties, position of accessories, etc.
5. Certification must be signed and sealed by Land Surveyor registered in the State of Montana.
6. Fill in Cross Index & Section Diagram at bottom of sheet.

CERTIFIED CORNER RECORDATION

Corner North 1/4 Corner Section 7 T. 30N R. 30E P.M.M. Phillips County

1. Set a granite stone 14x10x6 inches, 10 inches in the ground for 1/4 Section corner marked 1/4 on North face: dug pits 18x18x12 inches East and West of stone 5 1/2 feet distance and raised a mound of earth 1 1/2 feet high 3 1/2 foot base along side.
2. The corner was apparently destroyed during construction of a farm road at this location. This corner was re-established by using ties obtained from U.S.B.R. plats and local evidence under Montana Department of Highways project RS 242-1(6)0 dated April 1938.
3. Set a #5 rebar with aluminum cap stamped Interstate Engineering R.L.S. 7324. This corner falls 30 feet East of an existing "T" Iron which was placed by the U.S.B.R. Set a M.A.R. L.S. placard on a fence corner post at a distance of 42.7 feet West of the corner.

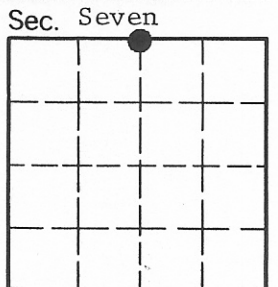
INTERSTATE ENGINEERING, INC. Box 648 Sidney, Montana 59270



I, GREGORY I. JOHNSON certify the information shown herein is true and correct.
 Signature of Ground Party Chief
 7324LS
 I, GREGORY I. JOHNSON certify that the corner record correctly represents work performed by me or under my direction in compliance with the "Corner Recordation Act" (Montana Code Annotated, M.C.A.)
 Signature of Surveyor & Seal
 Date: June 87 Reg. No. 7324 L.S.
 Employer: _____

Office of Clerk and Recorder, County of _____ . This "corner record" was filed for record on _____ was noted on the cross-index plat and is assigned page No. _____ , in book No. _____

County Official



Cross Index No. E-3 T. 30N R. 30E P.M.M.

• - corner this sheet