

INSTRUCTIONS

327672

1. Original and/or subsequent record used to evaluate the corner position.
2. Description of evidence found, note discrepancies in the record, state method of establishing lost or obliterated corners.
3. Description of monument and accessories set to perpetuate the corner position.
4. Sketch of corner, show all pertinent data which can best be shown in a sketch example, corner marking, topography ties, position of accessories, etc.
5. Certification must be signed and sealed by Land Surveyor registered in the State of Montana.
6. Fill in Cross Index & Section Diagram at bottom of sheet.

CERTIFIED CORNER RECORDATION

Corner E1/4 Sec 22 T. 30N, R. 29E P.M.M. Phillips County

ORIGINAL RECORD:

In 1891, James M. and Rodney W. Page set a sandstone 18" x 10" x 3", 12" in the ground for 1/4 section corner marked 1/4 on West face; dug pits 18" x 18" x 12" North and South of stone 5 1/2' distance and raise a mound of earth 1 1/2' high, 3 1/2' base alongside.

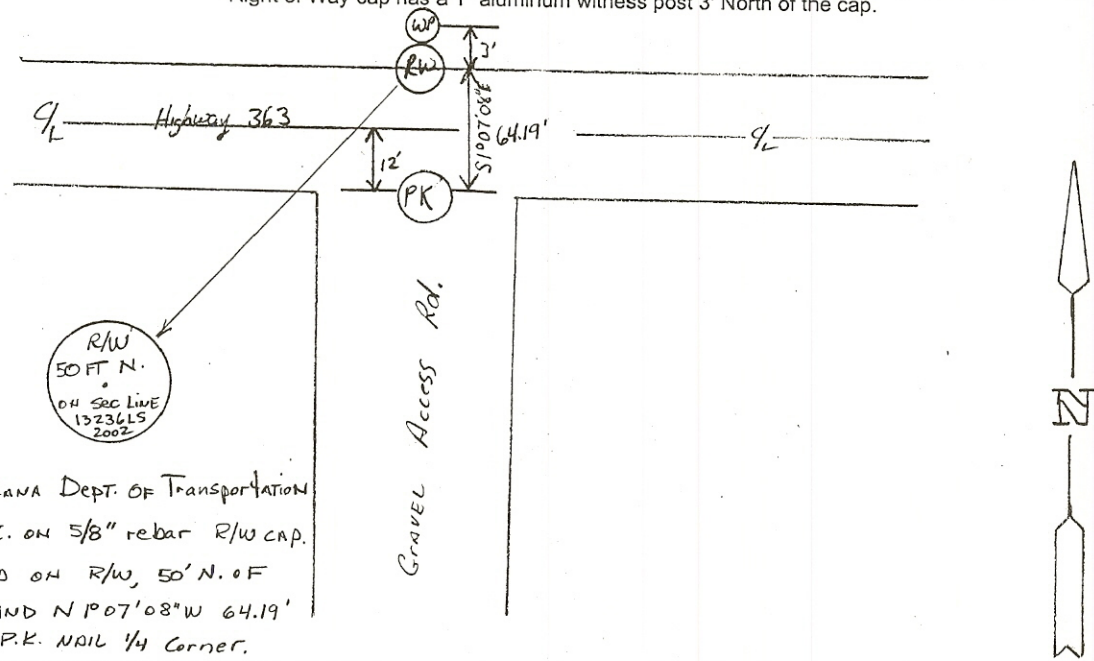
In approximately 1938, the United States Bureau of Reclamation did work on Milk River Project RH-MT-1, but no record could be found to determine whether this corner was reset or not.

FOUND:

In 2002, Survey Crew 41-86 found no evidence of corner.

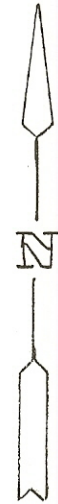
SET:

In 2002, Survey Crew 41-86 set a PK nail using single proportion measurement from calculated points to the North (NE Sec 22), and to the South (SE Sec 22). A PK nail was used as the point falls in the asphalt of Highway 363, approximately 12' south of the centerline. The corner is S1°07'08"E 64.19' from a 2" aluminum cap on a 5/8" rebar which is a Right of Way point. The Right of Way cap has a 1" aluminum witness post 3' North of the cap.



R/W  
50 FT N.  
ON SEC LINE  
13236LS  
2002

MONTANA DEPT. OF TRANSPORTATION  
2" A.C. ON 5/8" REBAR R/W CAP.  
PLACED ON R/W, 50' N. OF  
3/4 AND N P 07'08"W 64.19'  
FROM P.K. NAIL 1/4 CORNER.



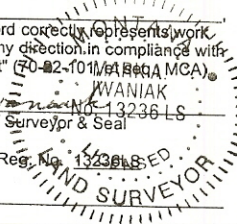
SKETCH OF CORNER

CERTIFICATION

I, Brent Silha,  
certify the information shown herein is true and correct.  
*Brent Silha*  
Signature of Ground Party Chief

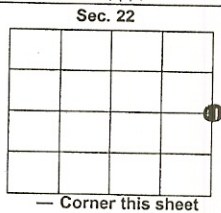
I, Mark Iwaniak,  
certify that this Corner Record correctly represents work performed by me or under my direction in compliance with the "Corner Recordation Act" (20-02-101, MCA).  
*Mark A. Iwaniak*  
Signature of Surveyor & Seal

Date: 10-11-02 Reg. No. 13236LS  
Employer: MDT



Office 327672 B-CR P-#777  
PHILLIPS COUNTY MONTANA Fee \$  
record Filed 10/16/2002 At 08:02 AM  
on the Laurel N Hines, Clerk and Recorder  
By *Stephanie M. Koon*, Deputy

\_\_\_\_\_. This "corner  
\_\_\_\_\_, was noted  
look No. \_\_\_\_\_  
\_\_\_\_\_  
County Official



Cross Index No. P-17 T. 30N R. 29E, PMM

Adopted July 1, 1981, Montana Board of Professional Engineers & Land Surveyors

DRD: :Q:PS: