

INSTRUCTIONS

1. Original and/or subsequent record used to evaluate the corner position.
2. Description of evidence found, note discrepancies in the record, state method of establishing lost or obliterated corners.
3. Description of monument and accessories set to perpetuate the corner position.
4. Sketch of corner, show all pertinent data which can best be shown in a sketch example, corner marking, topography ties, position of accessories, etc.
5. Certification must be signed and sealed by Land Surveyor registered in the State of Montana.
6. Fill in Cross Index & Section Diagram at bottom of sheet.

CERTIFIED CORNER RECORDATION

Corner N 1/4 Cor Sec 14 T. 29N R. 39E P.M.M. Valley County

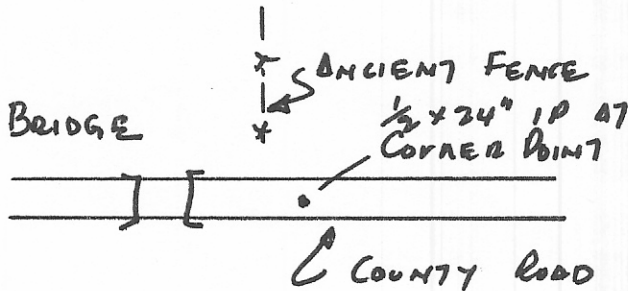
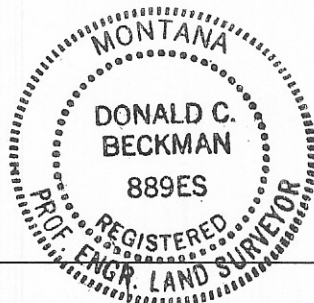
GLO RECORD

31.50 Dry channel Cherry Creek course S.

40.00 Set a granite stone 12 x 8 x 8 inches 8 inches in the ground. for 1/4 sec cor marked 1/4 N. face. dug pits 18 x 18 x 12 inches E and W of stone 5 1/2 feet dist. and raised a mound of earth 1 1/2 feet high 3 1/2 feet base alongside

EVIDENCE FOUND

None as construction of county road has obliterated the corner. Re established the corner from GLO RECORDS. Measured from BC at NW Township Cor to pin at NE Township Cor, re established NW corner of sec. 14 and N 1/4 cor from this measure, proportioning distances.



CERTIFICATION

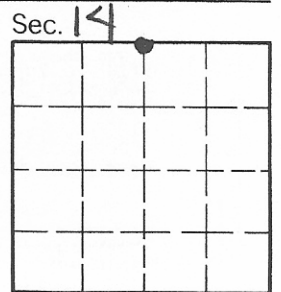
I, D. C. Beckman
 certify the information shown herein is true and correct.
D. C. Beckman
 Signature Ground Party Chief

I, D. C. Beckman
 certify that this Corner Record correctly represents work performed by me or under my direction in compliance with the "Corner Recordation Act" (70-22-101, et seq., M.C.A.)
D. C. Beckman
 Signature of Surveyor & Seal

Date: 7-25-84 Reg. No. 889 ES
 Employer: Owner Beckman Engineering

SKETCH OF CORNER

STATE OF MONTANA
 Office of Clerk and Recorder, County of VALLEY. This "corner record" was filed for record on Sept. 4, 1984 at 8:00 A.M. was noted on the cross-index plat and is assigned page No. 653, in book No. 1 of Corner Recordations Mary Lou Eide County Official by Berna Britzke, Deputy
 FEE: DH



• - corner this sheet