

**INSTRUCTIONS**

1. Original and/or subsequent record used to evaluate the corner position.
2. Description of evidence found, note discrepancies in the record, state method of establishing lost or obliterated corners.
3. Description of monument and accessories set to perpetuate the corner position.
4. Sketch of corner, show all pertinent data which can best be shown in a sketch example, corner marking, topography ties, position of accessories, etc.
5. Certification must be signed and sealed by Registered Land Surveyor in State of Montana.
6. Fill in Cross Index & Section Diagram at bottom of sheet.

**CERTIFIED CORNER RECORDATION**

Corner S.E. Corner, Section 17 T. 28 N R. 56 E P.M.M. Roosevelt County

1. Original and/or subsequent record -- Set a sandstone 16 x 10 x 5 ins., 11 ins. in the ground for cor. to secs. 16, 17, 20 and 21, marked with 3 notches on S. and 4 notches on E. edges; dug pits 18 x 18 x 12 ins. in each sec, 5½ ft. dist., and raised a mound of earth 2 ft. high, 4½ ft. base, alongside.

Dependent Resurvey - 1947 - Cor. of secs. marked by the original monument a limestone 16 x 10 x 5 ins., firmly set and properly marked as described in the official record, and altered to a corner for secs. 20 and 21, in the record of the survey of the N. portion of the township in 1907. At the corner point, set an iron post, 3 ft. long, 2 ins. diam., 30 ins. in the ground, with brass cap mkd.

T28N R56E  
S 17  
S 20 S 21  
1947

Bury the old stone in hole alongside the iron post; raise a mound of stone, 2 ft. base, 1½ ft. high, S. of corner.

2. Description of evidence found -- Found Brass Cap with Stone By (Marked C-C) SEE ATTACHED SKETCH.
3. Description of monument and accessories set -- Set 3/8" x 8" Spike 186.8 feet east of Corner - SEE ATTACHED SKETCH.
4. ~~SKETCH OF CORNER IS ATTACHED.~~

CERTIFICATION

I, Leo J. Horgan  
certify the information shown herein is true and correct.

Leo J. Horgan  
Signature Ground Party Chief

I, \_\_\_\_\_  
certify that this Corner Record correctly represents work performed by me or under my direction in compliance with the "Corner Recordation Act" (70-22-101, et seq., M.D.A.)

T. Nelson  
Signature of Surveyor & Seal

Date: \_\_\_\_\_ Reg. No. \_\_\_\_\_

Employer: \_\_\_\_\_

**297610**

**SKETCH OF CORNER**

Office of Clerk and Recorder, County of Roosevelt. This "corner record" was filed for record on ~~the~~ February 7 ~~day of~~ 1983 at 8:30 o'clock A. M. was noted on the cross-index plat and is assigned page No. \_\_\_\_\_, in

book No. \_\_\_\_\_  
Fee D. H. \_\_\_\_\_  
Leo J. Horgan  
R. Rt 2 Box 93,  
Williston ND 58001

Velan A. Eggen  
County Official  
by Margaret M. Brown  
Deputy  
Cross Index No. N-9 T. 28N R. 56E P.M.M.

Sec. 17


• - corner this sheet

# 211

CORNER RECORDATION  
 S.E. CORNER, SECTION 17  
 T 28 N - R 56 E  
 ROOSEVELT COUNTY, MONTANA  
 5-19-82

CERTIFIED CORNER RECORDATION

Section 17 T 28 N R 56 E PMM Roosevelt

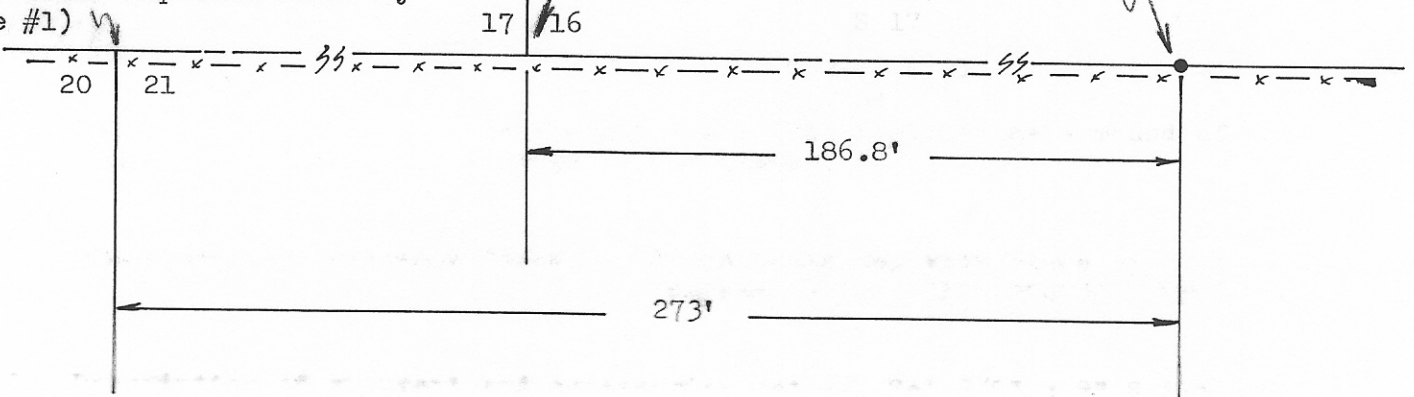
NI

Found Brass Cap with Stone By.  
 (Marked C-C)

Set 3/8" x 8" Spike  
 (May not be on Line)

NO SCALE

Found Brass Cap with Stone By  
 (Note #1)



- NOTES: 1. Evidence of Pits not located as should be.  
 2. East-West Fence Near Brass Caps.

Leo J. Horgan  
 certify the information shown herein is true and correct.  
*Leo J. Horgan*  
 Signature Ground Party Chief

I certify that this Corner Record correctly represents work performed by me or under by direction in compliance with the "Corner Recordation Act" (70-22-101, et seq., M.D.A.)  
*J. Nelson*  
 Signature of Surveyor & Seal

Date \_\_\_\_\_ Reg. No. \_\_\_\_\_  
 Employer \_\_\_\_\_

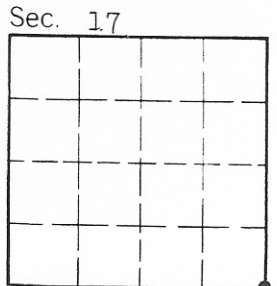
297610

SKETCH OF CORNER

Office of Clerk and Recorder, County of Roosevelt. This "corner record" was filed for record on the February 7 day of 1983 at 8:30 o'clock A. M. was noted on the cross-index plat and is assigned page No. \_\_\_\_\_, in

book No. \_\_\_\_\_  
 Fee D. H.  
 Leo J. Horgan  
 R. Rt 2 Box 93,  
 Williston ND 58801

*Walter A. Eggen*  
 County Official  
 by *Theresa M. Brown*  
 Deputy  
 Cross Index No. N-9 T. 28N R. 56E PMM



• - corner this sheet

INDEXED # 211