

CERTIFIED CORNER RECORDATION

Corner: N1/4 Sec. 29, T.28N., R56E., P.M.M., Roosevelt County

Original Record: In 1947 William H. Teller, Associated Cadastral Engineer, set an iron post, 3 ft. long, 1 in. diam., 34 ins. in the ground, with a brass cap mkd.

S 20
1/4 —————
S 29
1947

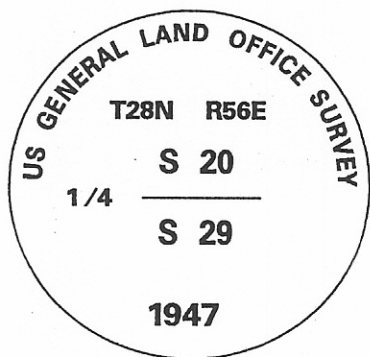
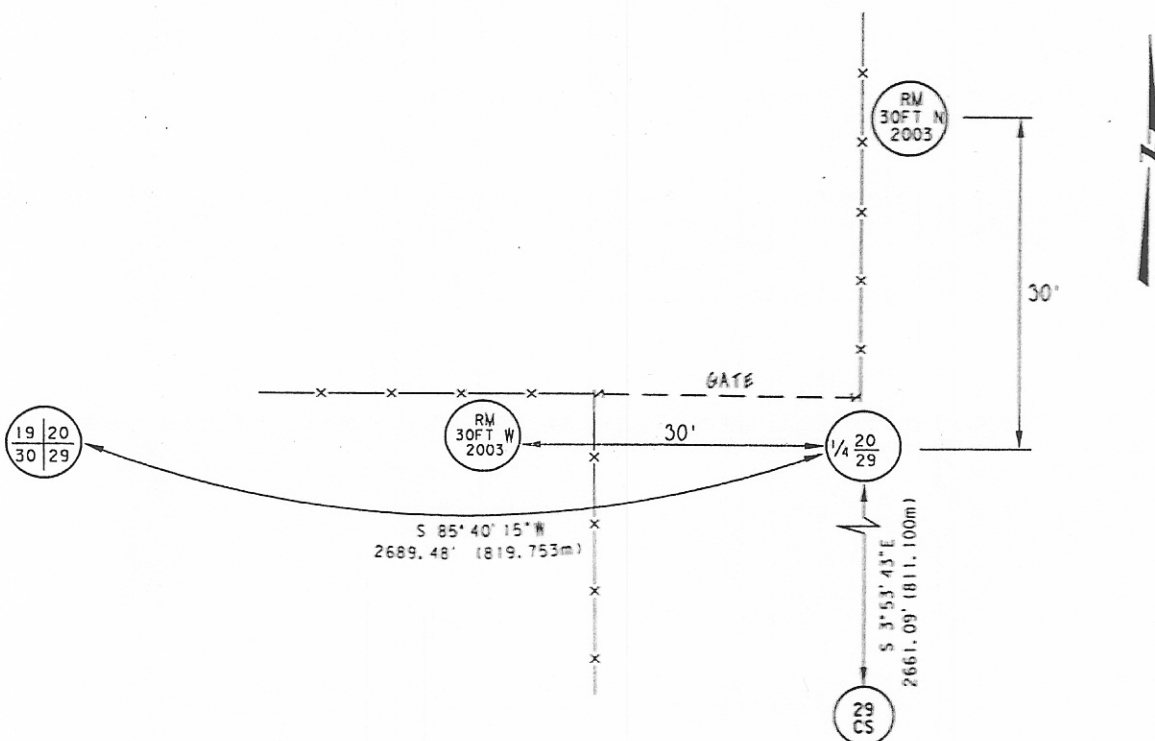
Raise a mound of stone, 3 ft. base, 2 ft. high, N. of corner.

Found: In January 1985, Gregory Johnson, P.L.S. for Interstate Engineering found original corner as described and filed a corner recordation at Roosevelt County courthouse.

Found: In August 2003, MDT Survey Crew 41-86 found original monument as described set flush with ground at fence corner of a North-West fence line.

Set: In August 2003, MDT Survey Crew 41-86 set MDT survey witness post alongside corner, and set 2-2" aluminum caps as references 30' north and west of corner with MDT survey witness posts alongside.

STATE OF MONTANA ROOSEVELT COUNTY
 RECORDED: 09/15/2003 9:50 COR RECORD
 CLERK AND RECORDER BY: *Sherry Sheehan*
 DELIVER TO: MT DEPT OF TRANSPORTATION P O BOX 8909 GLENDALE MT 59330-0890
 FEE: \$0.00



SKETCH OF CORNER

CERTIFICATION

I, Brent Silha certify the information shown herein is true and correct.

Brent Silha
Signature of Ground Party Chief

I, Mark A. Iwaniak, certify that this Corner Record correctly represents work performed by me or under my direction in compliance with the "Corner Recordation Act" #0-22-101, et seq., MCA1

Mark A. Iwaniak
Signature of Surveyor & Seal

Date: 9-12-03 Registration No. E#13236LS
Employer: Montana Department of Transportation

Office of Clerk and Recorder, County of _____, This "corner record" was filed for record on _____, was noted on cross-index plot, and is assigned Page No. _____, in Book No. _____

County Official

Section 29

● = Corner this sheet