

# CERTIFIED CORNER RECORDATION

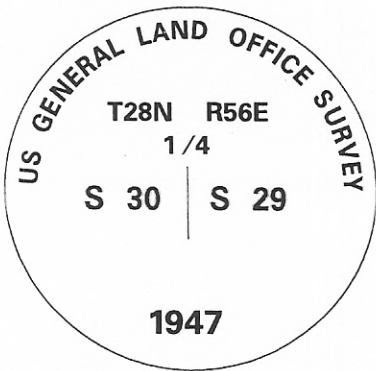
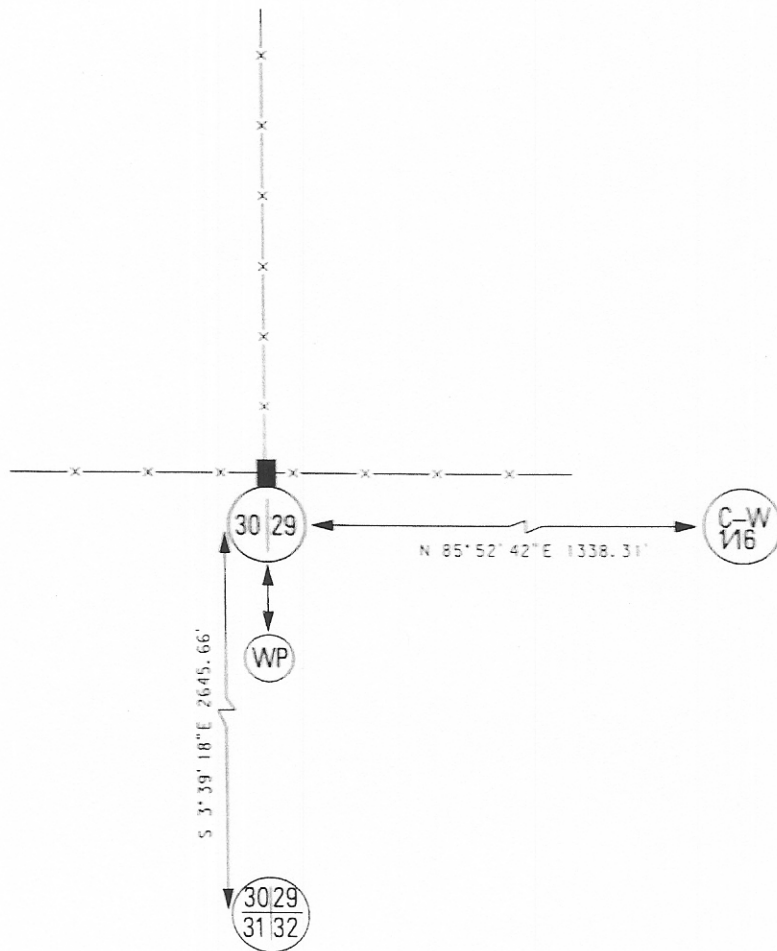
Corner: **W1/4 Cor. Sec. 29, T.28N., R56E., P.M.M., Roosevelt County**

**Original Record:** In 1947, William Teller set an iron post, 3' long, 1" diam., 34" in the ground with brass cap marked as shown below, build a collar of stone, 3' diam., flush with surface around corner.

**Found:** In July 2007, MDT Survey Crew 41-86 found original monument at N-E-W fence intersection with MDT witness post set 3' south of corner. This monument was also found in 2002 and is shown on C.O.S. #266B at Roosevelt County Courthouse.

374828 COR RECORD Pages: 1  
 STATE OF MONTANA ROOSEVELT COUNTY  
 RECORDED: 08/17/2007 10:05 KOT: COR RECORD  
 Cheryl A Hansen CLERK AND RECORDER  
 FEE: \$0.00  
 BY: *[Signature]*  
 TO: MT DEPT OF TRANSPORTATION Bldg 890, GLENDIVE, MT 59330-0890

1080



**SKETCH OF CORNER**

### CERTIFICATION

I, Brent Silha certify the information shown herein is true and correct.

*[Signature]*

Signature of Ground Party Chief

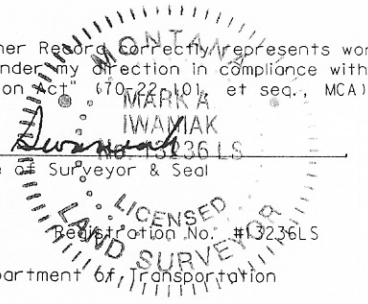
I, Mark A. Iwaniak, certify that this Corner Record correctly represents work performed by me or under my direction in compliance with the "Corner Recordation Act" (70-22-101, et seq., MCA)

*[Signature]*

Signature of Surveyor & Seal

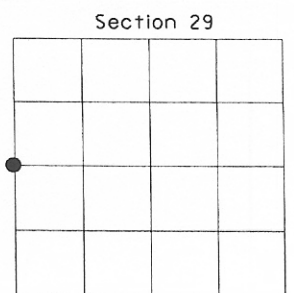
Date: 8/15/07

Employer: Montana Department of Transportation



Office of Clerk and Recorder, County of \_\_\_\_\_ This "corner record" was filed for record on \_\_\_\_\_, was noted on cross-index plat, and is assigned Page No. \_\_\_\_\_ in Book No. \_\_\_\_\_

\_\_\_\_\_  
County Official



● = Corner this sheet

**Cross Index No. T-5, T. 28N., R.56E., P.M.M.**