

- INSTRUCTIONS
1. Original and/or subsequent record used to evaluate the corner position.
 2. Description of evidence found, note discrepancies in the record, state method of establishing lost or obliterated corners.
 3. Description of monument and accessories set to perpetuate the corner position.
 4. Sketch of corner, show all pertinent data which can best be shown in a sketch example, corner marking, topography ties, position of accessories, etc.
 5. Certification must be signed and sealed by Land Surveyor registered in the State of Montana.
 6. Fill in Cross Index & Section Diagram at bottom of sheet.

CERTIFIED CORNER RECORDATION

Corner NW SECTION CORNER SECTION 14 T. 28N R. 40E P.M.M. VALLEY County

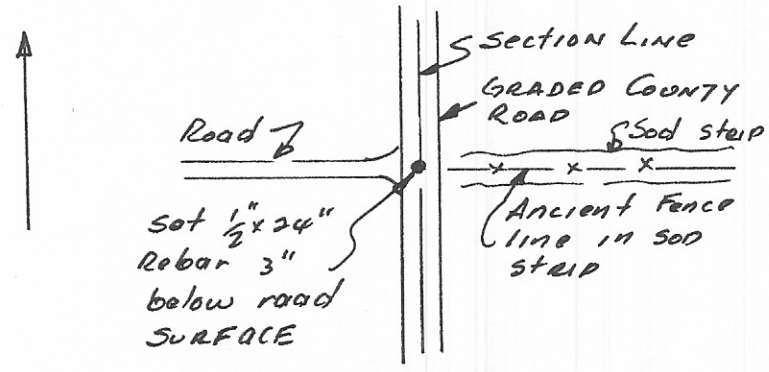
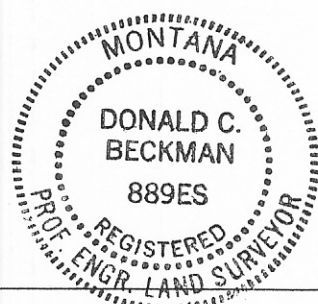
NORTHWEST SECTION CORNER TO SECTION 14

GLO RECORD

80.00 SET A SANDSTONE 12X10X5 INS. 8 INS. IN THE GROUND FOR CORNER TO SECS. 10,11, 14, AND 15 MARKED WITH 4 NOTCHES ON S AND 2 NOTCHES ON E EDGES, DUG PITS 18X18X12 INS IN EACH SEC. 5 1/2 FT DIST AND RAISED A MOUND OF EARTH 2 FT HIGH 4 1/2 FT BASE ALONGSIDE (FROM LATEST SURVEY PLAT AND NOTES BY JAMES AND RODNEY PAGE 1891)

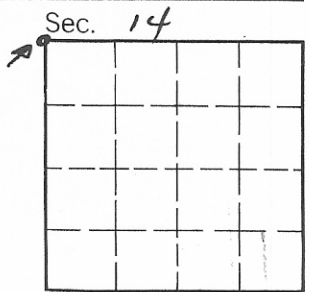
EVIDENCE FOUND

TIME, THE CONSTRUCTION OF A GRADED COUNTY ROAD ALONG THE SECTION LINE, AND FARMING ON ALL SIDES HAVE CAUSED THE LOSS OF THE STONE AND THE PITS, ETC. SET THE CORNER IN THE CENTER OF THE GRADED ROAD CONSISTENT WITH THE MEASURED DISTANCES TO THE RECORDED SECTION CORNER TO THE NORTH, AND THE IDENTIFIED GLO BRASS CAP MARKING THE CORNER TO THE SOUTH, IN LINE WITH THE ANCIENT FENCE LINE TO THE EAST, AND AN OLD ROAD TO THE WEST. SEE THE CERTIFICATE OF SURVEY FOR SECTIONS 14 AND 23 AND CORNER RECORDINGS FOR THE TIER OF SECTIONS ALONG THE NORTH BOUNDARY OF THE TOWNSHIP FOR FURTHER RECORD.



CERTIFICATION
I, D. C. BECKMAN certify the information shown herein is true and correct.
Signature Ground Party Chief
I, D. C. BECKMAN certify that this Corner Record correctly represents work performed by me or under my direction in compliance with the "Corner Recordation Act" (70-22-101, et seq., M.C.A.)
Signature of Surveyor & Seal
Date: 3/25/85 Reg. No. 889ES
Employer: owner

STATE OF MONTANA
Office of Clerk and Recorder, County of VALLEY . This "corner record" was filed for record on MARCH 29, 1985 at 11:50 A.M.
was noted on the cross-index plat and is assigned page No. 659, in book No. 1 of Corner Recordations Mary Lou Eide Deputy County Official
FEE: DH By [Signature] Deputy



Cross Index No. 1, 17 T. 28N R. 40E P.M.M.