

INSTRUCTIONS

1. Original and/or subsequent record used to evaluate the corner position.
2. Description of evidence found, note discrepancies in the record, state method of establishing lost or obliterated corners.
3. Description of monument and accessories set to perpetuate the corner position.
4. Sketch of corner, show all pertinent data which can best be shown in a sketch example, corner marking, topography ties, position of accessories, etc.
5. Certification must be signed and sealed by Land Surveyor registered in the State of Montana.
6. Fill in Cross Index & Section Diagram at bottom of sheet.

CERTIFIED CORNER RECORDATION

Corner 1/4 Sec. 18 & 19 T. 28N R. 40E P.M.M. Valley County

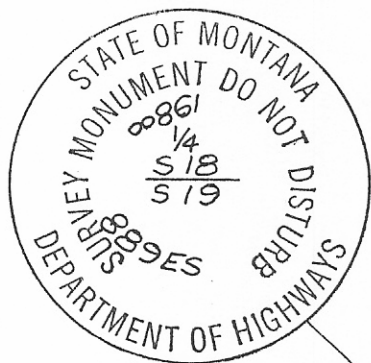
1946 GLO Record --- Set an iron Post --- with brass cap --- from which: PC 275+86.3 marked by a steel post, set along side the track GN Railway bears 70°31'W, 109 Lks. distance. The north face of concrete pier third from the N.W. end of the bridge bears S10°W, 56 Lks. (37.0 ft) distance, the distance is measured from a point 4' above the surface of the ground. The N.E. corner of the top of the west abutment of the same bridge, measured from the face of the concrete wall bears S50°W, 52 Lks. (34.3 ft.) distance.

7 May 1988 - Record by D.C. Beckman, 889 ES recorded in book 1 at page 766 Valley County records, Doc. #74247 calls for a found 1/2" rebar which was replaced with a 3/4" diam. Montana Department of Highways alum. cap.

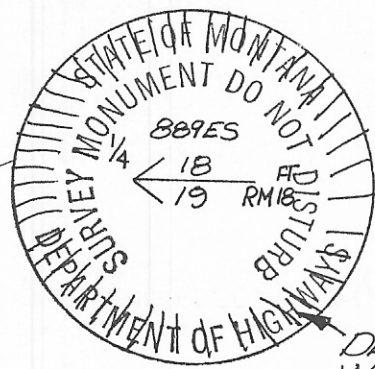
26 Aug. 1988 - Record by D.C. Beckman 889 ES recorded in book 1 at page 807 Valley County records Doc. #75167 calls for setting a 3/4" diam. Montana Department of Highways alum. cap at the point given in the 1946 GLO notes above, measured from the third concrete pier and west abutment of the railway bridge. Beckman left the previously set monument in and marked it RM with an arrow pointing to the correct monument.

Aug. 1988 - Record by Gregory L. Johnson 7324S --- found M.D.O.H. monument at location --- which fits GLO record.

Found 3 Oct. 1988 - A 3/4" M.D.O.H. alum. monument, 2" below the surface of a dirt roadway in the correct position as called for in the 1946 GLO record and as recorded in the 26 Aug. 1988 Beckman record. From which a 3/4" M.D.O.H. alum. monument 12" above ground bears S81°E 18 feet marked as per diagram below with metal fence post witness along side. To further clarify which corner is correct, I defaced the wording "State of Montana Department of Highways" on the rim of the reference monument and reset the metal fence post witness 7' SE of the 1/4 corner on shoulder of upper roadway. See sketch below.



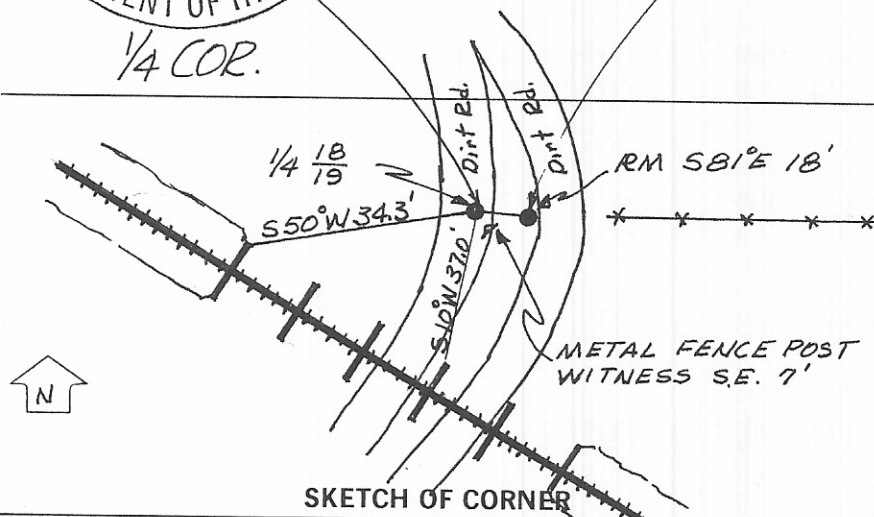
Found 3/4" Alum. Cap.  
2" bury



Found 3/4" Alum. Cap  
12" Above Gr.

DEFACED WORDING

R.M.



CERTIFICATION

I, Robert S. Custer  
certify the information shown herein is true and correct.

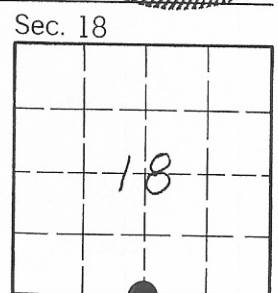
Signature Ground Party Client

I, Robert S. Custer  
certify that this Corner Record correctly represents work performed by me or under my direction in compliance with the "Corner Recordation Act" (70-22-101, et seq., M.C.A.)

Signature of Surveyor Seal 33255  
ROBERT S. CUSTER  
10/3/88  
Date: 10/3/88 Reg. No. 33255  
Employer: M.D.O.H.

REGISTERED LAND SURVEYOR

STATE OF MONTANA  
Office of Clerk and Recorder, County of VALLEY. This "corner record" was filed for record on OCTOBER 21st, 1988 at 10:30 AM was noted on the cross-index plat and is assigned page No. 824, in book No. 1 of CORNER RECORDS.



FEE: DH

By Mary Lou Cude County Official Deputy  
Cross Index No. N-3 T. 28N R. 40E P.M.M.

• - corner this sheet