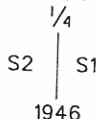


CERTIFIED CORNER RECORDATION

Corner: E1/4 Sec. 2, T.28N., R39E., P.M.M., Valley County

Original Record: Surveyed by James M. Page and Rodney W. Page in Oct. 1891. Original records not available.

Resurvey Record: Dependent Resurvey by Wm. H. Teller and Lyle F. Jones in 1946. The 1/4 sec. cor. of secs. 1 and 2, marked by the original monument, a sandstone, 14x8x8 ins.; firmly set, marked 1/4 on W. face. At the corner point set an iron post, 3 ft. long, 1 in. diam., 30 ins. in the ground, with brass cap marked

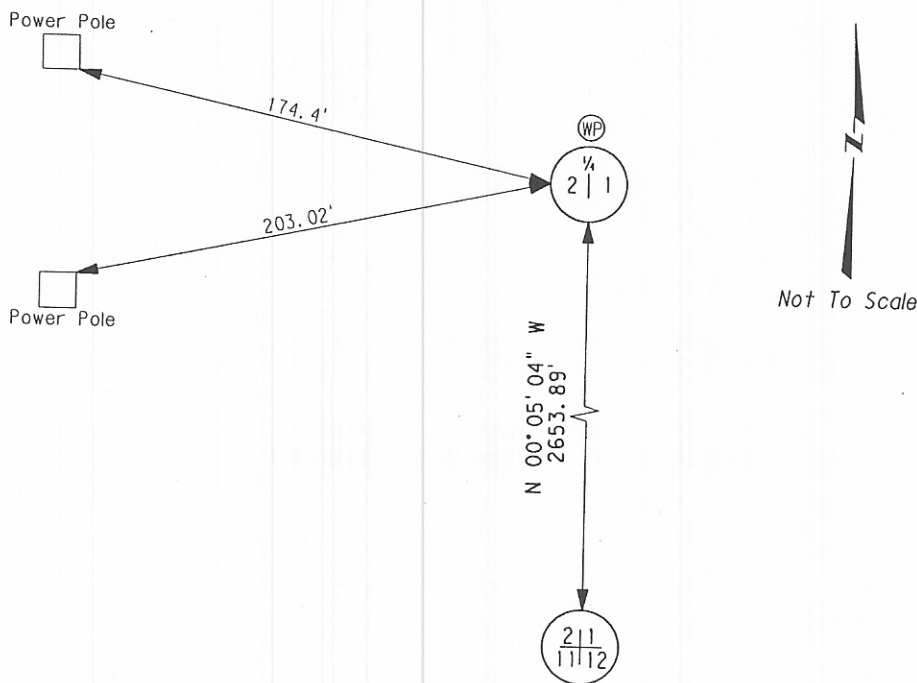


Bury the old stone along side the iron post; raise a mound of stone, 3 ft. base, 1 ft. high W. of corner.

Found: In 1997 Q. Wright and J.L. Brewer found GLO brass cap 2" above ground with scattered mound of stone to the west.

Set: In 1997 Monument in good condition. Q. Wright and J.L. Brewer Set a 5 1/2 ft galv. steel post as a witness post 0.4 ft. North of cap.

Found: In 2006 MDT Survey Crew 41-86 found brass cap as described above.



SKETCH OF CORNER

CERTIFICATION

I, Steve Grove certify the information shown herein is true and correct.

Steve Grove
Signature of Ground Party Chief

I, Mark A. Iwaniak, certify that this Corner Record correctly represents work performed by me or under my direction in compliance with the "Corner Recordation Act" (70-22-101, MCA)

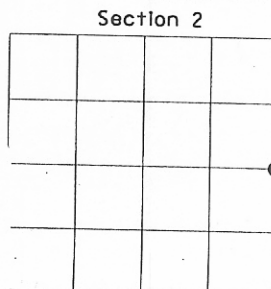
Mark A. Iwaniak
Signature of Surveyor & Seal
No. 13236 LS

Date: 6-15-06 Registration No. #13236 LS

Employer: Montana Department of Transportation

Office of Clerk and Recorder, County of _____, This "corner record" was filed for record on _____, was noted on cross-index plat, and is assigned Page No. _____, In Book No. _____

131410 CORNER REC Pages: 1
STATE OF MONTANA VALLEY COUNTY
RECORDED: 06/21/2006 12:43 KOI: CORNER REC
LYNNE NYQUIST CLERK AND RECORDER
FEE: \$0.00 BY: *Rene Clappitt Deputy*



● = Corner this sheet

Cross Index No. C-21, T.28N., R.39E., P.M.M.