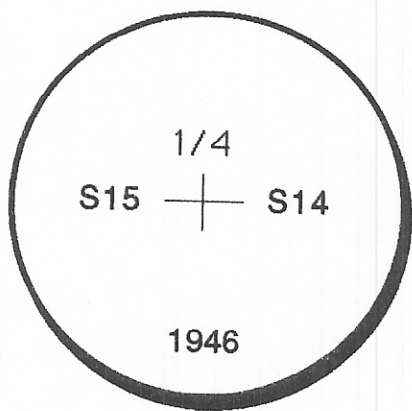


CERTIFIED CORNER RECORDATION

Corner	E1/4 Section 15	T. 28N	R. 39E	PMM	Valley	County
--------	-----------------	--------	--------	-----	--------	--------

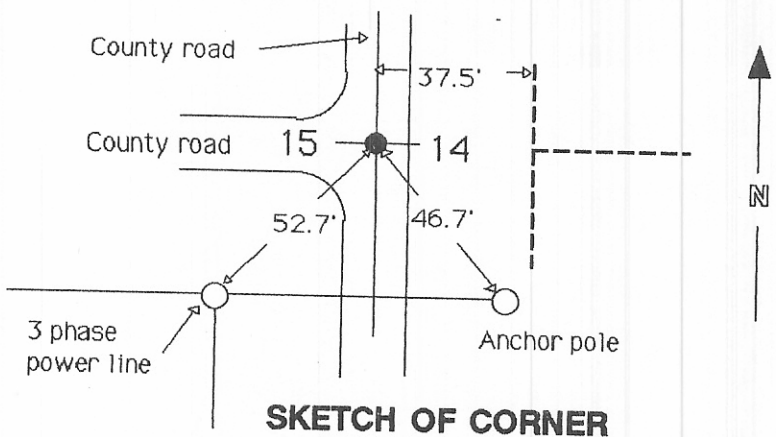
Found: Brass cap 1.3 feet below the surface of a county road running North and South and in line with a county road running West.

Set: 40 penny nails with plastic cap in three phase power pole 52.7 feet southwest of corner and an anchor pole 46.7 feet southeast of corner.



U.S. B.L.M. Brass Cap

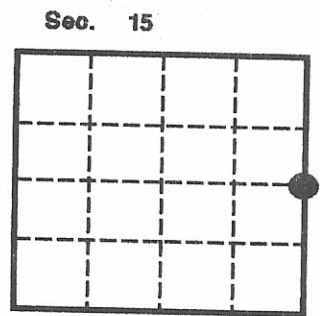
Note! Dashed lines indicate fences.



SKETCH OF CORNER

CERTIFICATION
 I, Richard E. Guenzi
 certify the information shown herein is true and correct.
Richard E. Guenzi
 Signature of Ground Party Chief
 I, Richard E. Guenzi
 certify that this Corner Record correctly represents work performed by me or under my direction in compliance with the "Corner Recordation Act" (70-28-103 et seq., M.C.A.)
Richard E. Guenzi
 Date: 3-1-90 Reg. No. 886S
 Employer: Guenzi Surveys

Document Number: 80144
 Office of Clerk and Recorder, County of Valley. This "corner record" was filed for record on MARCH 2nd, 1990 at 10:30 AM was noted on the cross-index plat and is assigned page No. 886, in book No. 1
 Fee: None
 By: Mary Lou Eric
 Clerk and Recorder
Mary Cily
 Deputy



● Corner this sheet
 89-043

T. 28N R. 39E PMM

L-17