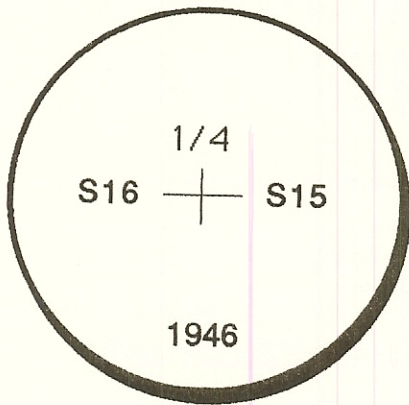


CERTIFIED CORNER RECORDATION

Corner	W1/4 Section 15	T. 28N	R. 39E	PMM	Valley	County
--------	-----------------	--------	--------	-----	--------	--------

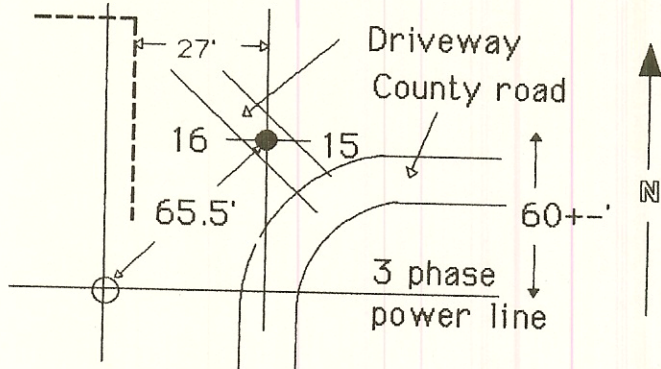
Found: Brass cap below the surface in a driveway 33 feet north of a county road running east and in line with a county road running south.

Set: 40 penny nail with plastic cap in three phase power pole 65.5 feet southwest of corner.



U.S. B.L.M. Brass Cap

Note! Dashed lines indicate fences.



SKETCH OF CORNER

CERTIFICATION

I, Richard E. Guenzi certify the information shown herein is true and correct.

[Signature]
Signature of Ground Party Chief

I, Richard E. Guenzi certify that this Corner Record correctly represents work performed by me or under my direction in compliance with the "Corner Recordation Act" (70-22-101) 61 sec., M.C.A.)

[Signature]

Date: 3-1-90 Reg. No. 886S

Employer: Guenzi Surveys

Document Number: 80145

Office of Clerk and Recorder, County of Valley. This "corner record" was filed for record on MARCH 2nd, 1990 at 10:30 A.M.

was noted on the cross-index plat and is assigned page No. 887, in

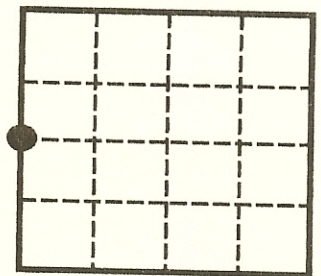
book No. 1

[Signature]
Clerk and Recorder

Fee: None

By: *[Signature]*
Deputy

Sec. 15



● Corner this sheet

89-043

T. 28N R. 39E PMM

L-13