

INSTRUCTIONS

1. Original and/or subsequent record used to evaluate the corner position.
2. Description of evidence found, note discrepancies in the record, state method of establishing lost or obliterated corners
3. Description of monument and accessories set to perpetuate the corner position.
4. Sketch of corner, show all pertinent data which can best be shown in sketch example, corner marking, topography ties, position of accessories, etc.
5. Certification must be signed and sealed by Land Surveyor registered in the State of Montana.
6. Fill in Cross Index & Section Diagram at bottom of sheet.

CERTIFIED CORNER RECORDATION

Corner W 1/4 Sec. 13 T. 28N R. 3W P.M.M. Pondera County

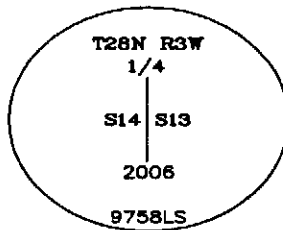
Subsequent Record: Certificate of Survey by D. Lester Turnbull (2628ES). Approved 5/2/1973 and recorded in Pondera County as document number 220580. Shows and dimensions to an undescribed monument held as the West 1/4 corner, section 13.

Certified Land Corner Recordation by Stanley W. Newton (3495S) recorded 10/18/1974 in Pondera County as document number 225164. " At quarter corner common to 13 and 14 sections found hub & tack marking quarter corner... At center of section 14 found 1/4" I.P. marking center of section... At quarter corner common to 13 & 14 sections, placed Brass Cap stamped 1/4."

Found: A #6 rebar with a 1-1/2" brass cap set in concrete laying loose near said rebar. An impression of said rebar can be seen on the underside of the concrete/brass cap

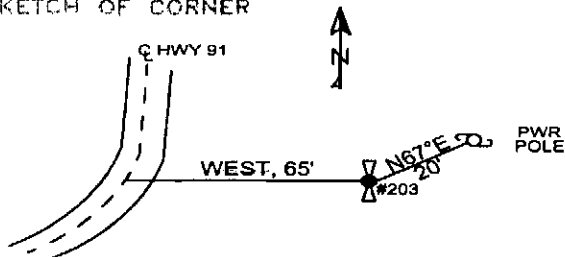
Perpetuation: Set a 3-1/4 inch Morrison-Maierle Inc. aluminum cap marked as shown below on the found rebar, from which:

- The centerline of State Hwy 91 bears West, 65 feet distant.
- A power pole bears N67°E, 20 feet from the Quarter corner



Refer to Certificate of Survey No. 312880 for retracement survey showing adjacent corner ties.

SKETCH OF CORNER



CERTIFICATION

I, Toby P. Ferguson  
certify the information shown herein to be true and correct.  
*T. Ferguson*  
 Signature of Ground Party Chief

I, Gunner B. Gatchell  
certify that this Corner Record accurately represents work performed by me or under my direction in compliance with the "Corner Recordation Act" (70-22-101, et seq., M.C.A.)  
*Gunner B. Gatchell*  
 Signature of Surveyor & Seal

Date 10/24/06 Reg. No. 9758LS  
 Employer Morrison-Maierle Inc.

Office of Clerk and Recorder, County of \_\_\_\_\_ . This "corner record" was filed for record on \_\_\_\_\_ was noted on the cross-index plat and is assigned page No. \_\_\_\_\_, in book No. \_\_\_\_\_

County Official

Sec. 13


Cross Index No. I-21 T. 28N R. 3W P.M.M.

Adopted July 1, 1981. Montana Board of Professional Engineers & Land Surveyors

• corner this sheet