

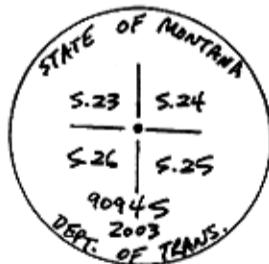
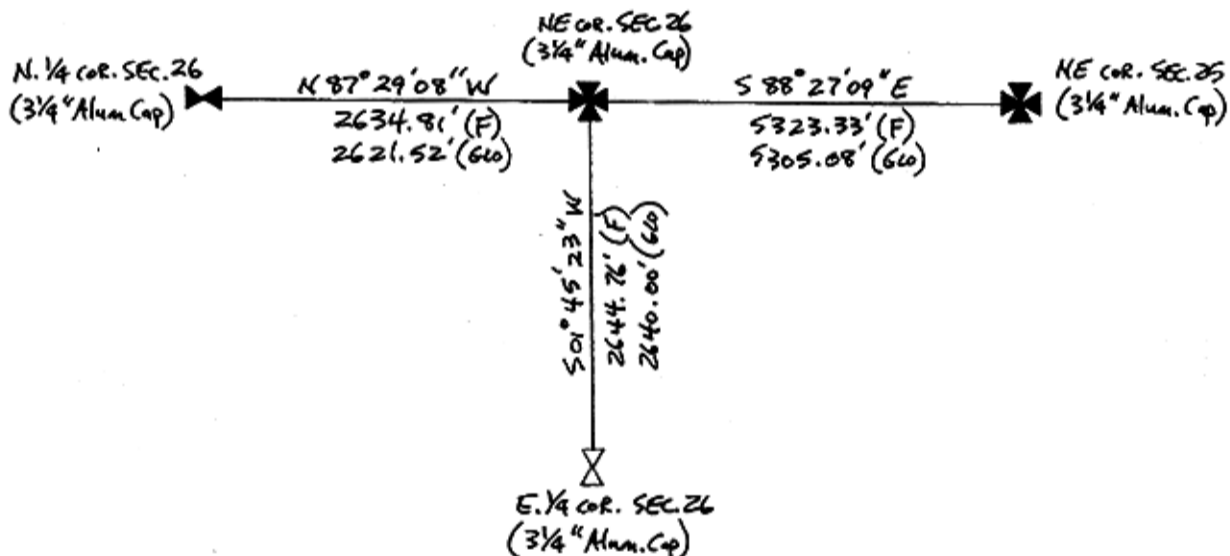
INSTRUCTIONS

1. Original and/or subsequent record used to evaluate the corner position.
2. Description of evidence found, note discrepancies in record, state method of establishing lost or obliterated corners.
3. Description of monument and accessories set to perpetuate the corner position.
4. Sketch or corner, show all pertinent data which can best be shown in a sketch example, corner marking, topography ties, position of accessories, etc.
5. Certification must be signed and sealed by Registered Land Surveyor in State of Montana.
6. Fill in Cross Index & Section Diagram at bottom of sheet.

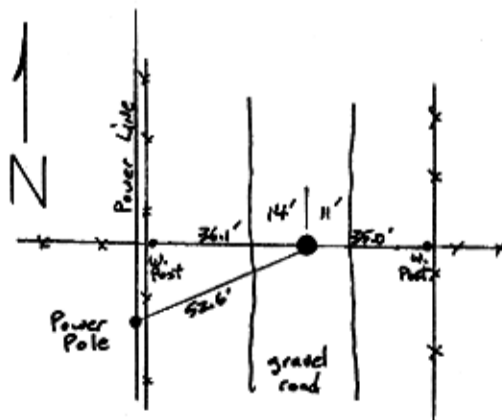
CERTIFIED CORNER RECORDATION

Corner NE Cor. Section 26 T. 28N R. 3W P.M.M. Pondera County

1. '1874' GLO - Set a boulder 12x9x6 in. 8 in. in the ground for cor. to Secs. 23, 24, 25 and 26. Marked with 1 notch on the East and 2 on the South edges. Raised a mound of stone alongside.
2. Found and accepted a 5/8" rebar with a yellow plastic cap. 6" deep in gravel road.
3. Set a 2-1/2" aluminum pipe with a 3/4" MDT aluminum cap 6" deep in gravel road in place of 5/8" rebar w/Y.P. cap.



3/4" Alum. CAP



SKETCH OF CORNER

CERTIFICATION

I, Robert F. Stangler certify the information shown herein is true and correct.

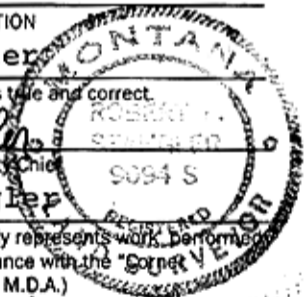
Robert F. Stangler
Signature Ground Party Chief

I, Robert F. Stangler certify that this Corner Record correctly represents work performed by me or under my direction in compliance with the "Corner Recordation Act" (70-22-101, et seq., M.D.A.)

Robert F. Stangler
Signature of Surveyor & Seal

Date: 5/20/03 Reg. No. 9094S

Employer: TD&H, Inc.



Office of Clerk and Recorder, County of _____, This "corner Record" was filed for record on the _____ day of _____ 2000. Was noted on the cross-index plat and is assigned page No. _____ in Book No. _____

County Official

Cross Index No. R-21 T. 28N R. 3W P.M.M.

Sec. 26

* corner this sheet