

# CERTIFIED LAND CORNER RECORDATION

## DESCRIPTION OF CORNER EVIDENCE FOUND, AND ORIGINAL RECORD (IF KNOWN)

At the section corner common to section 15,16,21 & 22, T28N-R3W, M.P.M., Pondera county, we find;

the intersection of FAS 534 and a county road to the North;  
a copper-weld pin, set by us on a previous survey, on the  
south edge of said FAS 534 marked for section corner to section  
15,16,21,22, and in line with county road to the North;  
original monument obviously obliterated by highway construction.

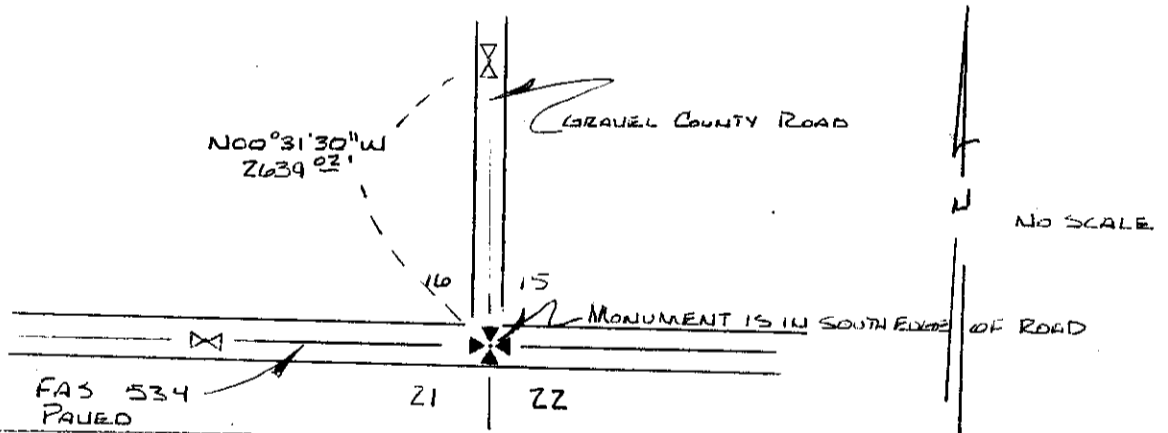
Original Notes; Not available

## DESCRIPTION OF MONUMENT AND ACCESSORIES ESTABLISHED TO PERPETUATE THE ORIGINAL LOCATION OF THIS CORNER:

Date of work: Sept. 85

Perpetuation of monument still exists from original survey.  
No other perpetuation is done.

## SKETCH, WITH COURSE AND DISTANCE TO ADJACENT CORNERS IF DETERMINED IN THIS SURVEY. (MAY SKETCH OR PASTE REPRODUCTION ON REVERSE SIDE.)



Surveyor's Seal

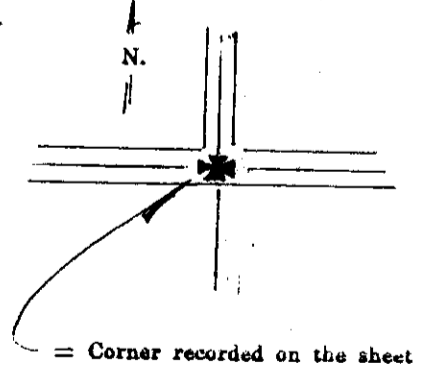
I, Thomas L. Russell 8238 S.I.T.  
certify that the information shown herein is true and correct.

Thomas L. Russell  
Signature of Ground Party Chief

I, Wayne E. Otto  
certify that I have carefully performed or reviewed the  
work done on the diagrammed corner as reported on this  
recording form and approve the same.

Wayne E. Otto  
Signature of Surveyor

### DIAGRAM OF CORNER:



3524 ES  
Registration Number

Office of Clerk and Recorder, County of \_\_\_\_\_  
This "corner record" was filed for record on the \_\_\_\_\_ day of \_\_\_\_\_, 19\_\_\_\_, was noted on the cross-index plat and is  
assigned page No. \_\_\_\_\_, in book No. \_\_\_\_\_

County Official  
Cross Index No. N-13 T. \_\_\_\_\_ R. \_\_\_\_\_ Mer. \_\_\_\_\_