

INSTRUCTIONS

1. Original and/or subsequent record used to evaluate the corner position.
2. Description of evidence found, note discrepancies in the record, state method of establishing lost or obliterated corners.
3. Description of monument and accessories set to perpetuate the corner position.
4. Sketch of corner, show all pertinent data which can best be shown in a sketch example, corner marking, topography ties, position of accessories, etc.
5. Certification must be signed and sealed by Land Surveyor registered in the State of Montana.
6. Fill in Cross Index & Section Diagram at bottom of sheet.

CERTIFIED CORNER RECORDATION

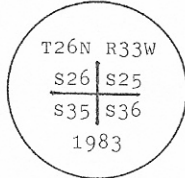
Corner SW Sec Cor of S25 T. 26 N. R. 33 W. Sanders County

I. 1905 original G.L.O. record by E. Page and N. Orr: Set a stone and 4 bearing trees.

1983 B.L.M. dependent resurvey record: The cor. of secs. 25, 26, 35, and 36, monumented with a slate stone, 12x9x5 ins., set 8 ins. in the ground, mkd. with 1 notch on the E and 1 notch on the S faces.

At the corner point

Set an aluminum post, 30 ins. long, 2 1/2 ins. diam., 20 ins. in the ground, with aluminum cap mkd.



From which

- A fir, 12 ins. diam., bears N4° E, 70 lks. (46.20 ft.) dist., mkd. T26N R33W S25 BT.
- A fir, 12 ins. diam., bears S80° E, 40 lks. (26.40 ft.) dist., mkd. T26N R33W S36 BT.
- A fir, 12 ins. diam., bears S26° W, 52 lks. (34.32 ft.) dist., mkd. T26N R33W S35 BT.
- A fir, 28 ins. diam., bears N33° W, 48 lks. (31.68 ft.) dist., mkd. T26N R33W S26 BT.

Bury the original stone alongside post and raise a collar of stone, 2 ft. diam., around the aluminum post.

II. Found a 2 1/2 ins. diam. alum. pipe, 8 ins. above the ground, with BLM alum. cap mkd. as shown.

From which:

- A fir, 13 ins. diam., bears N4° E, 46.2 ft. dist., visible scribing.
- A fir, 11 ins. diam., bears S80° E, 26.4 ft. dist., healed face.
- A fir, 13 ins. diam., bears S26° W, 34.3 ft. dist., healed face.
- A dead fir, 15 ins. diam., bears N33° W, 31.6 ft. dist., mkd. T26N R33W S26 BT.

III. Established one new bearing tree:

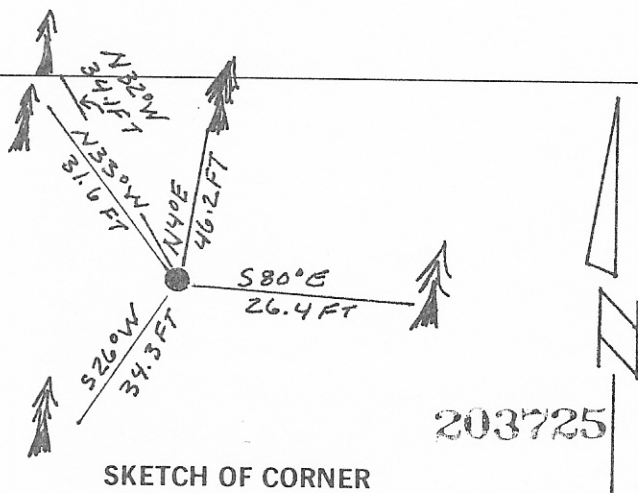
A douglas fir, 9 ins. diam., bears N32° W, 34.1 ft. dist., mkd. T26N R33W S26 BT.

Painted red bands around the bearing trees and attached Land Survey Monument and Bearing Tree signs.

Set a 6 ft. galvanized steel guard post with Land Survey Marker and Property Boundary decals, South, 3 ft.

Magnetic Declination: 20° East.

3 758



SKETCH OF CORNER

CERTIFICATION

I, Thomas M. Hommel
certify the information shown herein is true and correct.
Thomas M Hommel
Signature Ground Party Chief

I, Alvah F. Hughes
certify that this Corner Record correctly represents work performed by me or under my direction in compliance with the "Corner Recordation Act" (70-22-10) et seq., M.C.A.
Alvah F. Hughes
Signature of Surveyor & Seal

Date: 3/23/92 Reg. No. 7322 LS

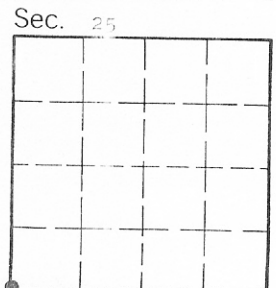
Employer: U.S. FOREST SERVICE

Office of Clerk and Recorder, County of Sanders. This "corner record" was filed for record on May 20, 1992 at 12:32pm was noted on the cross-index plat and is assigned page No. 758, in

book No. 3
no fee

Dixie Knight Clerk by *Brenda Fisher dep*
County Official

V-21 Cross Index No. T. 26 N R. 33 W PMM



• - corner this sheet