

INSTRUCTIONS

1. Original and/or subsequent record used to evaluate the corner position.
2. Description of evidence found, note discrepancies in the record, state method of establishing lost or obliterated corners.
3. Description of monument and accessories set to perpetuate the corner position.
4. Sketch of corner, show all pertinent data which can best be shown in a sketch example, corner marking, topography ties, position of accessories, etc.
5. Certification must be signed and sealed by Land Surveyor registered in the State of Montana.
6. Fill in Cross Index & Section Diagram at bottom of sheet.

CERTIFIED CORNER RECORDATION

Corner South 1/4 of Sec. 4 T. 26 N. R. 33 W. P.M.M. Sanders County

I. 1905 original G.L.O. record by E. Page and N. Orr: Set a stone and two bearing trees.

1984 B.L.M. dependent resurvey record: The 1/4 sec. cor. of secs. 4 and 9, monumented with an aluminum post, 2 1/2 ins. diam., projecting 3 ins. above the ground, with aluminum cap mkd.



From which the remains of the original bearing tree:

A fir, 24 ins. diam., bears N38° W, 10 lks. (6.60ft.) dist., with a healed over blaze.

From which the 1979 bearing tree:

A fir, 13 ins. diam., bears S28 1/2° W, 39 lks. (25.74 ft.) dist., mkd. 1/4 S9 BT.

This cor. was perpetuated by J. Svennungsen, Montana Registered Land Surveyor, No. 3607ES, and is accepted as a careful and faithful perpetuation of the position of the original cor.

II. Found a 2 1/2 ins. diam. alum. pipe, 3 ins. above the ground, with alum. cap mkd. as shown.

From which:

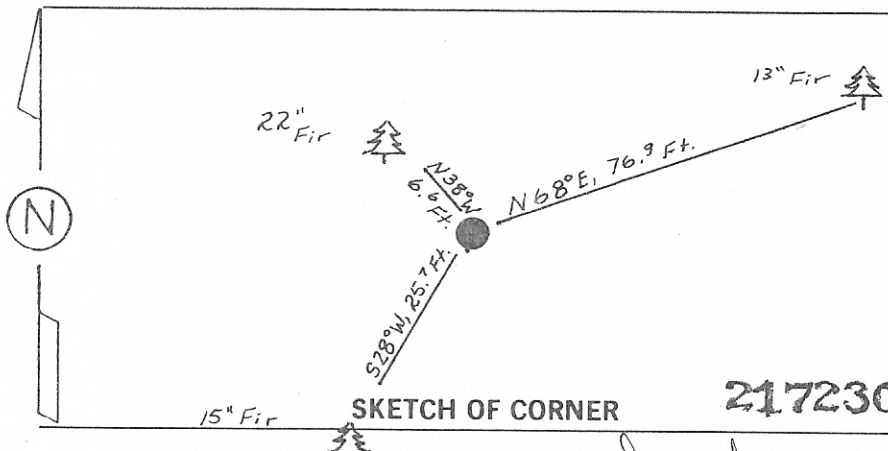
- A douglas fir, 15 ins. diam., bears S28° W, 25.7 ft. dist., healed face.
- A douglas fir, 22 ins. diam., bears N38° W, 6.6 ft. dist., healed face.

III. Establish and replaced a bearing tree that was to be cut at a later date.

A fir, 13 ins. diam., bears N68° E, 76.9 ft. dist., mkd. 1/4 S4 BT. (No other Trees available in Sec. 9)

Painted red bands around the bearing trees and attached Land Survey Mounument and Bearing Tree signs. Set a 6 ft. galvanized steel guard post with Land Survey Marker decal, East, 3 ft.

Magnetic Declination: 20° East.



CERTIFICATION

I. Thomas M. Hommel
certify the information shown herein is true and correct.
Thomas M. Hommel
Signature of Found Party Chief

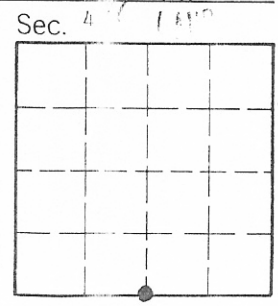
I. Alvah F. Hughes
certify that this Corner Record correctly represents work performed by me or under my direction in compliance with the "Corner Recordation Act" (70-22-101, et seq., M.C.A.)
Alvah F. Hughes
Signature of Surveyor & Seal UGHES

Date: 12/12/94 Reg. No. 7322 LS 322 LS

Employer: U.S. FOREST SERVICE

Office of Clerk and Recorder, County of Sanders. This "corner record" was filed for record on April 14, 1995 @ 1:45 p.m. was noted on the cross-index plat and is assigned page No. 4 183, in book No. _____

Tillie Wallata By Patricia M. Ingraham
County Official



E-11 Cross Index No. _____ T. _____ R. _____ PMM • - corner this sheet