

INSTRUCTIONS

1. ... and/or subsequent record used to evaluate the corner position.
2. Description of evidence found, note discrepancies in the record, state method of establishing lost or obliterated corners.
3. Description of monument and accessories set to perpetuate the corner position.
4. Sketch of corner, show all pertinent data which can best be shown in a sketch example, corner marking, topography ties, position of accessories, etc.
5. Certification must be signed and sealed by Land Surveyor registered in the State of Montana.
6. Fill in Cross Index & Section Diagram at bottom of sheet.

19

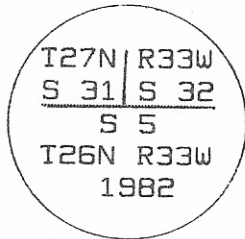
CERTIFIED CORNER RECORDATION

Corner SE Cor. of S31 T. 27N R. 33W P.M.M. Sanders County

I. 1905 GLO Survey: Set a sandstone 15 X 10 X 5 ins., 10 ins. in the ground for corner of Section 31 and 32, and establish two BT's.

1982 BLM Remonumentation:

Set an aluminum post, 28 in. long, 2 1/2 ins. diam., 24 ins. in the ground, with aluminum cap mkd.



from which:

A pine, 38 in. diam., bears N 55° E., 195 lks. dist., mkd. T27N R33W S32 BT.

A cedar, 10 in. diam., bears N 49° W., 94 lks. dist., mkd. T27N R33W S31 BT.

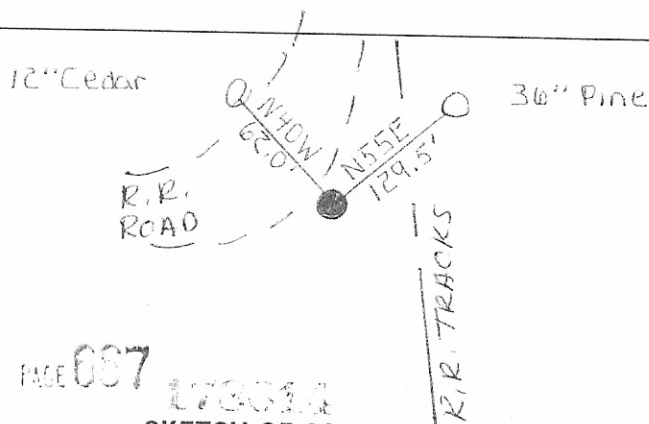
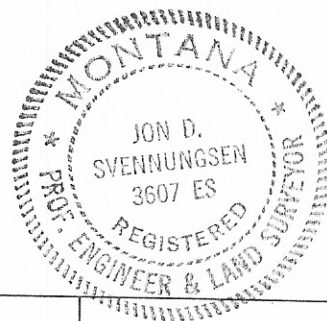
Raise a collar of stone, 2 ft. diam., around the aluminum post.

II. I found a BLM aluminum cap, 3 inches above ground, marked as shown and from which:

A 36 in. pine bears N 55° E, 129.5', mkd. T27N R33W S32 BT.

A 12 in. cedar bears N 40° W, 62.0', mkd. T27N R33W S31 BT.

III. I painted red the scribing and blazes on BT's and mounted USFS signs 54-2, 3 and 9.



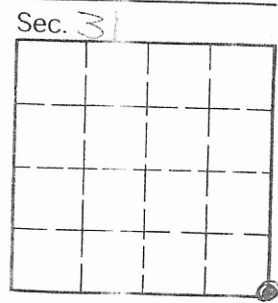
VOL 2 PAGE 007 178014

SKETCH OF CORNER

CERTIFICATION
 I, Jon D. Svennungsen
 certify the information shown herein is true and correct.
Jon D. Svennungsen
 Signature Ground Party Chief
 I, Jon D. Svennungsen
 certify that this Corner Record correctly represents work performed
 by me or under my direction in compliance with the "Corner
 Recordation Act" (70-22-101, et seq., M.C.A.)
Jon D. Svennungsen
 Signature of Surveyor & Seal
 Date: 10/13/85 Reg. No. 3607ES
 Employer: Svennungsen Engineers, Inc.

Office of Clerk and Recorder, County of Sanders. This "corner record" was filed for record on Dec 3, 1985 was noted on the cross-index plat and is assigned page No. 667, in book No. 2

Walter D. ...
 County Official



Cross Index No. 25 T. 27N R. 33W P.M.M.

• - corner this sheet