

**INSTRUCTIONS**

1. Original and/or subsequent record used to evaluate the corner position.
2. Description of evidence found, note discrepancies in the record, state method of establishing lost or obliterated corners.
3. Description of monument and accessories set to perpetuate the corner position.
4. Sketch of corner, show all pertinent data which can best be shown in a sketch example, corner marking, topography ties, position of accessories, etc.
5. Certification must be signed and sealed by Land Surveyor registered in the State of Montana.
6. Fill in Cross Index & Section Diagram at bottom of sheet.

**CERTIFIED CORNER RECORDATION**

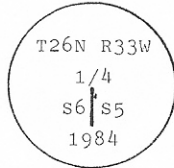
Corner East 1/4 of Sec. 6 T. 26 N. R. 33 W. P.M.M. Sanders County

I. 1905 original G.L.O. record by E. Page and N. Orr: Set a stone and two bearing trees.

1984 B.L.M. dependent resurvey record: The 1/4 sec. cor. of secs. 5 and 6, monumented with a rebar, 5/8 ins. diam., set 8 ins. below the surface of the ground, with plastic cap mkd. McMillen 46598.

At the corner point

Set a copper coated steel stake, 30 ins. long, 5/8 in. diam., 12 ins. below the surface of the road, with brass cap mkd.



From which

A larch, 6 ins. diam., bears S71 3/4° W, 53 lks. (34.98 ft.) dist., mkd. XBT.

A pine, 20 ins. diam., bears N32 1/2° W, 90 lks. (59.40 ft.) dist., mkd. 1/4 S6 BT.

Bury the rebar alongside the copper coated steel stake.

This cor. was reestablished by Carl R. McMillen, Montana Registered Land Surveyor, No. 46598, and is accepted as a careful and faithful reestablishment of the position of the original cor.

II. Found a 1 1/2 ins. diam. brass cap, 6 ins. below the surface of a road, mkd. as shown.

From which:

A larch, 9 ins. diam., bears S70° W, 34.8 ft. dist., healed face.

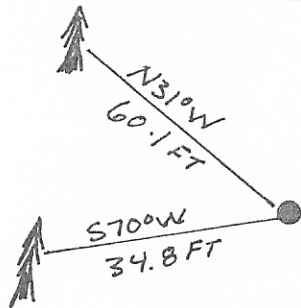
A douglas fir, 24 ins. diam., bears N31° W, 60.1 ft. dist., healed face. (Record: pine)

III. Painted red bands around the bearing trees and attached Land Survey Monument and Bearing Tree signs.

Set a 6 ft. galvanized steel guard post with Land Survey Marker decal. N50° E, 8 ft.

Magnetic Declination: 20° East.

3 713



203630

SKETCH OF CORNER

**CERTIFICATION**

I, Kevin A. Todd  
 certify the information shown herein is true and correct.  
Kevin A Todd  
 Signature Ground Party Chief

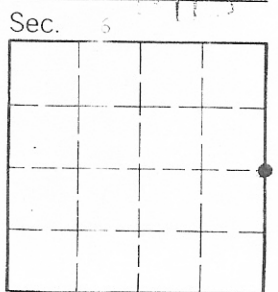
I, Alvah F. Hughes  
 certify that this Corner Record correctly represents work performed by me or under my direction in compliance with the "Corner Recordation Act" (70-22-101, et seq., M.C.A.)  
Alvah F. Hughes  
 Signature of Surveyor & Seal

Date: 3/23/92 Reg. No. 7322 MS

Employer: U.S. FOREST SERVICE

Office of Clerk and Recorder, County of Sanders. This "corner record" was filed for record on May 26 1992 at 11:47 AM was noted on the cross-index plat and is assigned page No. 713, in book No. 3

Deputy Clerk REC. By Fannie Wilkinson Day  
 County Official



Cross Index No. C-5 T. 26 N R. 33 W P.M.M.

• - corner this sheet