

INSTRUCTIONS

1. Original and or subsequent record used to evaluate the corner position.
2. Description of evidence found, note discrepancies in the record, state method of establishing lost or obliterated corners.
3. Description of monument and accessories set to perpetuate the corner position.
4. Sketch of corner, show all pertinent data which can best be shown in a sketch example, corner marking, topography lies, position of accessories, etc.
5. Certification must be signed and sealed by Land Surveyor registered in the State of Montana.
6. Fill in Cross Index & Section Diagram at bottom of sheet.

CERTIFIED CORNER RECORDATION

Corner North 1/4 corner Section 15 T. 26 N. R. 19 W. P.M.M. Lake County

RECORD: from Field Book No.2718, surveyed Oct.-Nov. 1892, page 30

Set a limestone 16"x6"x6", 11" in the ground, 1/4 marked on No. face, from which:

A 16" tamarack bears N62°10'W 226 lks. (149.2') no other trees within limits

FOUND:

Original stone in good condition, in swamp, on old east/west fence line, with a 2" O.D. pipe up 3 feet, 0.55 feet east of the top center of the found stone, from which:

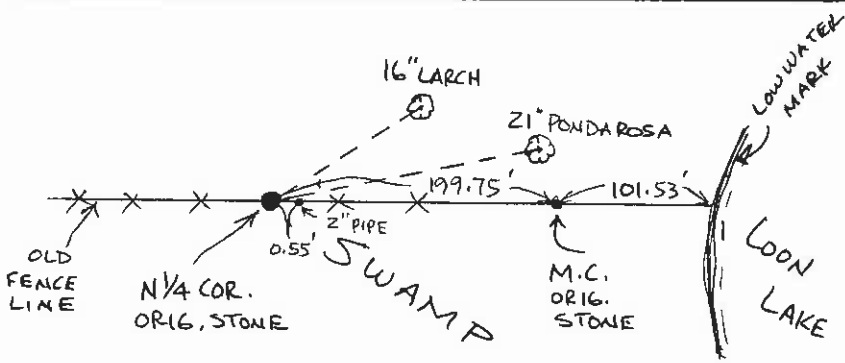
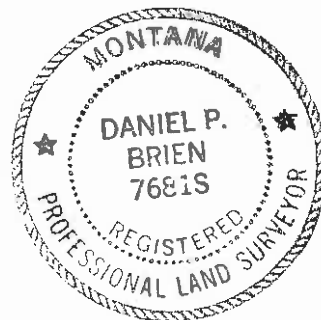
A 16" larch, scribing visible bears N64°02'E 149.5' to center, with a B.T. tag on tree by "W. Houge 8/19/63"

A 21" pondarosa, (BT for MC) bears N89°45'E 198.6' to center with a B.T. tag on tree by "Hogue/Kanaley 8/19/63"

SET: Nothing further set

NOTE: Turned to the center of the trees in our traverse.

REFERENCE: C.O.S. # 4292



SKETCH OF CORNER

CERTIFICATION

I, Daniel P. Brien certify the information shown herein is true and correct

Signature Ground Party Chief

Daniel P. Brien

I certify that this Corner Record correctly represents work performed by me or under my direction in compliance with the "Corner Recordation Act" (70-22-401 et seq., M.C.A.)

Daniel P. Brien

Signature of Surveyor & Seal

Date 9/28/89 Reg No 7681-S

Employer Hersman Land Survey

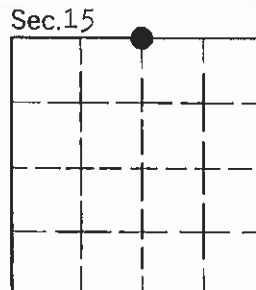
Office of Clerk and Recorder, County of Lake. This "corner

record" was filed for record on JAN 5 '90 at 2:10 pm.

was noted on the cross-index plat and is assigned microfile # 321946, in

C-1702
N/C

LORIN JACOBSON by Panda A. Holle, deputy
County Official



Cross Index No. J-15 T 26N R 19W P.M.M.

• - corner this sheet