

INSTRUCTIONS

1. Original and/or subsequent record used to evaluate the corner position.
2. Description of evidence found, note discrepancies in the record, state method of establishing lost or obliterated corners.
3. Description of monument and accessories set to perpetuate the corner position.
4. Sketch of corner, show all pertinent data which can best be shown in a sketch example, corner marking, topography ties, position of accessories, etc.
5. Certification must be signed and sealed by Land Surveyor registered in the State of Montana.
6. Fill in Cross Index & Section Diagram at bottom of sheet.

CERTIFIED CORNER RECORDATION

Corner $\frac{11}{14} \frac{12}{13}$ T. 25N R. 32W P.M.M. SANDERS County

I. ORIGINAL SURVEY, 1904: SET STONE AND FOUR BEARING TREES.

THE COR. OF SECS. 11, 12, 13 AND 14, MONUMENTED WITH AN IRON POST, 2 1/2 INS. DIAM., FIRMLY SET, PROJECTING 8 INS. ABOVE THE GROUND, WITH BRASS CAP, MKD. AS SHOWN BELOW, FROM WHICH THE 1977 BEARING TREES:

- A PINE, 12 INS. DIAM., BEARS N. 19 1/4° E., 35 LKS. DIST., MKD. T25N R32W 512 BT.
- A PINE, 9 INS. DIAM., BEARS S. 4° E., 61 LKS. DIST., MKD. T25N R32W 513 BT.
- A FIR, 7 INS. DIAM., BEARS S. 54° W., 59 LKS. DIST., MKD. T25N R32W 514 BT.
- A FIR, 12 INS. DIAM., BEARS N. 59° W., 45 LKS. DIST., MKD. T25N R32W 511 BT.

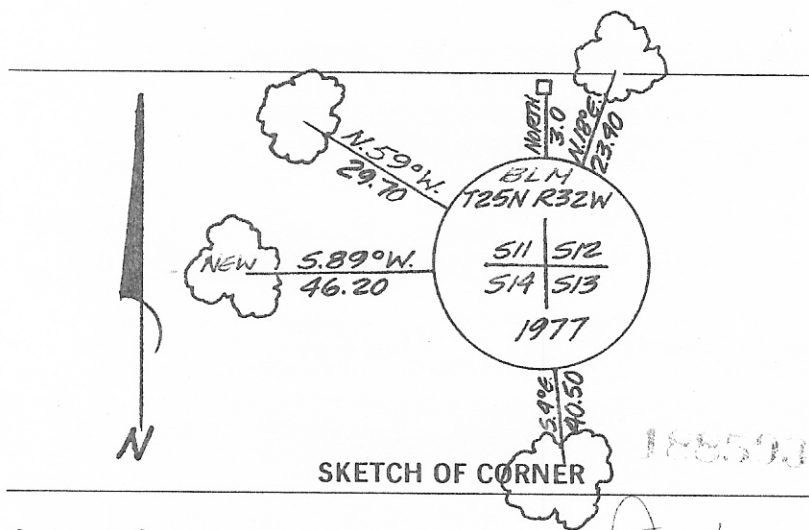
II. FOUND 3/4 IN. BRASS-CAPPED MON. IN ROCK CAIRN, FROM WHICH:

- A 17 IN. PINE BEARS N. 18° E., 23.40 FT., VISIBLE SCRIBING.
- A 14 IN. PINE BEARS S. 4° E., 40.50 FT.
- A 15 IN. DOUGLAS FIR BEARS N. 59° W., 29.70 FT., VISIBLE SCRIBING.

III. MON. IN GOOD CONDITION.

FROM THE CORNER POINT
A DOUGLAS FIR, 5 INS. DIAM., BEARS S. 89° W., 46.20 FT., SCRIBED T25N R32W 514 BT
SET POST 3.0 FT. NORTH OF MON. LSM TAG ON POST.
PAINTED AND TAGGED BT'S.

I-A. MONUMENT AND ACCESSORIES DESCRIBED IN ITEM I, WERE ESTABLISHED BY THE BUREAU OF LAND MANAGEMENT IN 1977.



165

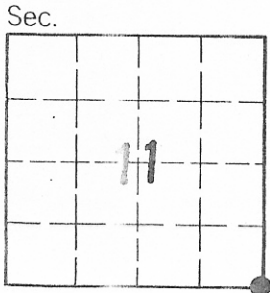


CERTIFIED BY CARL R. McMILLEN 4659S
I, DAVID HIGGINS
certify the information shown hereon is true and correct.
David Higgins
Signature Group Practice, CHIEF SURVEYOR

I, CARL R. McMILLEN
certify that this Corner Record correctly represents work performed by me or under my direction in compliance with the "Corner Recordation Act" (70-22-101, et seq., M.C.A.)
Carl R. McMillen
Signature of Surveyor & Seal

Date: 6-6-88 Reg. No. LS4659S
Employer: TRI-STATE LAND SURVEYING

Office of Clerk and Recorder, County of Sanders. This "corner record" was filed for record on June 22 1988 at 11:27 AM was noted on the cross-index plat and is assigned page No. 165, in book No. 3
Que Vaut Cert Rec for New Installation
County Official



• - corner this sheet