

INSTRUCTIONS

1. Original and/or subsequent record used to evaluate the corner position.
2. Description of evidence found, note discrepancies in the record, state method of establishing lost or obliterated corners.
3. Description of monument and accessories set to perpetuate the corner position.
4. Sketch of corner, show all pertinent data which can best be shown in a sketch example, corner marking, topography ties, position of accessories, etc.
5. Certification must be signed and sealed by Land Surveyor registered in the State of Montana.
6. Fill in Cross Index & Section Diagram at bottom of sheet.

CERTIFIED CORNER RECORDATION

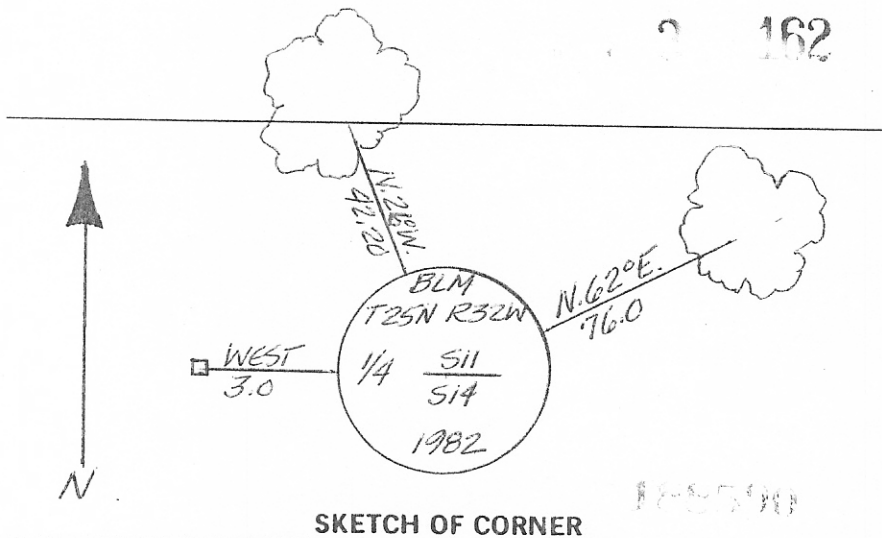
Corner 1/4 11/14 T. 25N R. 32W P.M.M. SANDERS County

I. ORIGINAL SURVEY, 1904: SET STONE AND TWO BEARING TREES.
 THE 1/4 SEC. COR. OF SECS. 11 AND 14, MONUMENTED WITH A BROKEN SANDSTONE, 12x10x5 INS. FIRMLY SET 8 INS. IN THE GROUND, MKD. 1/4 ON THE N. FACE, AND WITNESSED BY A MOUND OF STONE, 3 FT. BASE, 1 1/2 FT. HIGH, N. OF THE MONUMENT.
 AT THE CORNER POINT
 SET AN ALUMINUM POST, 30 INS. LONG, 2 1/2 INS. DIAM., 20 INS. IN THE GROUND, WITH ALUMINUM CAP, MKD. AS SHOWN BELOW, FROM WHICH:
 A PONDEROSA PINE, 18 INS. DIAM., BEARS N. 55° E., 115 LKS. DIST., MKD. 1/4 S11 BT.
 A PONDEROSA PINE, 15 INS. DIAM., BEARS N. 28° W., 63 LKS. DIST., MKD. 1/4 S11 BT.
 BURY THE ORIGINAL STONE ALONGSIDE AND RAISE A COLLAR OF STONE, 3 FT. DIAM., AROUND THE ALUMINUM POST.

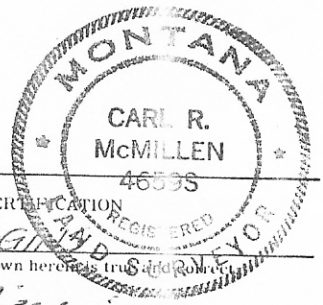
II. FOUND 3/4 IN. ALUMINUM MON. AT FENCE JACK, FROM WHICH:
 A PINE, 18 INS. DIAM., BEARS N. 26° W., 42.20 FT.; VISIBLE SCRIBING.
 A PINE, 22 INS. DIAM., BEARS N. 62° E., 76.0 FT.; VISIBLE SCRIBING.

III. MON. IN GOOD CONDITION,
 POSTED BT'S WITH 54-3 AND 54-9 TAGS.
 PAINTED SCRIBES, BLAZES AND BANDS ON BT'S.
 SET POST WITH LSM STICKER 3.0 FT. WEST OF MON.

I-A. MONUMENT AND ACCESSORIES DESCRIBED IN ITEM I, WERE ESTABLISHED BY THE BUREAU OF LAND MANAGEMENT IN 1977.



SKETCH OF CORNER



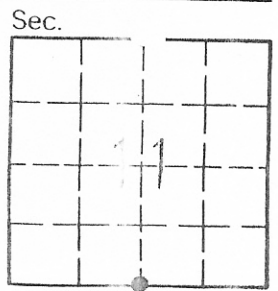
I, DAVID HIGGINS REGISTERED LAND SURVEYOR
 certify the information shown hereon is true and correct.
David Higgins
 Signature of Grant Party Chief

I, CARL R. McMULLEN
 certify that this Corner Record correctly represents work performed by me or under my direction in compliance with the "Corner Recordation Act" (30-22-101, et seq., M.C.A.)
Carl R. McMullen
 Signature of Surveyor & Seal

Date: 6-6-88 Reg. No. 46595
 Employer: TRI-STATE LAND SURVEYING

Office of Clerk and Recorder, County of Sanders. This "corner record" was filed for record on 22 May June 1988 11:24 A.M. was noted on the cross-index plat and is assigned page No. 162, in book No. 3 map

David Douglas
 County Official



• - corner this sheet