

INSTRUCTIONS

1. Original and/or subsequent record used to evaluate the corner position.
2. Description of evidence found, note discrepancies in the record, state method of establishing lost or obliterated corners.
3. Description of monument and accessories set to perpetuate the corner position.
4. Sketch of corner, show all pertinent data which can best be shown in a sketch example, corner marking, topography ties, position of accessories, etc.
5. Certification must be signed and sealed by Land Surveyor registered in the State of Montana.
6. Fill in Cross Index & Section Diagram at bottom of sheet.

CERTIFIED CORNER RECORDATION

Corner $\frac{3}{2}$ / $\frac{10}{11}$ T. 25N R. 32W P.M.M. SANDERS County

I. ORIGINAL SURVEY, 1904: SET STONE AND FOUR BEARING TREES.

THE COR. OF SECS. 2, 3, 10 AND 11, MONUMENTED WITH A FIBERGLASS STAKE, 16 INS. LONG, FIRMLY SET 16 INS. IN THE GROUND AND AT THE INTERSECTION OF THE REMAINS OF OLD, DOWN FENCES EXTENDING N., E., AND W., WITH FIBERGLASS TOP MKD. NINNEMAN 534 ES, ESTABLISHED BY J.W. NINNEMAN, MONTANA REGISTERED LAND SURVEYOR NO. 534 ES, AND ACCEPTED AS A CAREFUL AND FAITHFUL PERPETUATION OF THE POSITION OF THE ORIGINAL COR., FROM WHICH AN ORIGINAL BEARING TREE:

A LARCH SNAG, 30 INS. DIAM., BEARS N. 20 1/2° W. 163 LKS. DIST., MKD. T25N R32W 53 BT.

AT THE CORNER POINT

SET AN ALUMINUM POST, 30 INS. LONG, 2 1/2 INS. DIAM., 20 INS. IN THE GROUND, WITH ALUMINUM CAP, MKD. AS SHOWN BELOW, FROM WHICH:

A FIR, 8 INS. DIAM., BEARS N. 30° E., 28 LKS. DIST., MKD. T25N R32W 52 BT.

A FIR, 23 INS. DIAM., BEARS S. 39° E., 75 LKS. DIST., MKD. T25N R32W 511 BT.

A FIR, 5 INS. DIAM., BEARS S. 5° W., 34 LKS. DIST., MKD. X BT.

A FIR, 10 INS. DIAM., BEARS N. 24° W., 38 LKS. DIST., MKD. T25N R32W 53 BT.

BURY THE FIBERGLASS STAKE INSIDE THE ALUMINUM POST.

II. FOUND 3/4 IN. ALUM. MON. IN ROCK CAIRN, FROM WHICH:

A DOUGLAS FIR, 9 INS. DIAM., BEARS N. 29° E., 18.30 FT.; VISIBLE SCRIBING.

A PINE, 16 INS. DIAM., BEARS S. 13° E., 28.60 FT.; SCRIBING ILLEGIBLE.

A DOUGLAS FIR, 8 INS. DIAM., BEARS S. 24° W., 22.30 FT.; SCRIBING ILLEGIBLE.

A DOUGLAS FIR, 13 INS. DIAM., BEARS N. 25° W., 24.80 FT.; SCRIBING VISIBLE.

III. MON. IS IN GOOD CONDITION.

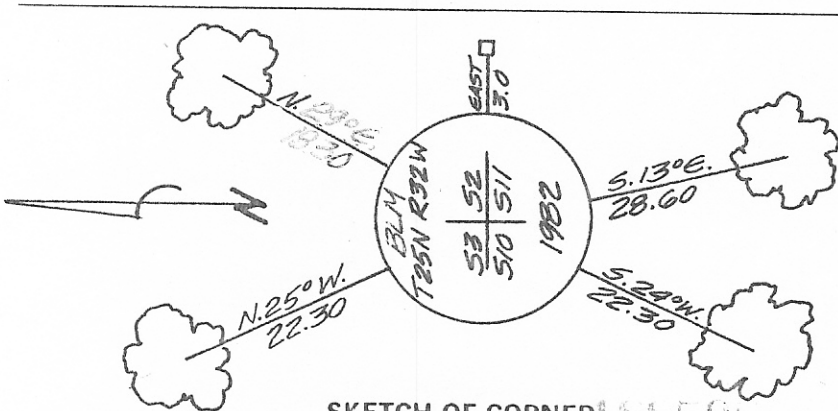
POSTED BT'S WITH 54-3 AND 54-9 TAGS.

PAINTED SCRIBES, BLAZES AND RED BANDS ON BT'S.

SET POST WITH LSM STICKER 3 FT. EAST OF MON.

I-A. MONUMENT AND ACCESSORIES DESCRIBED IN ITEM I, WERE ESTABLISHED BY THE BUREAU OF LAND MANAGEMENT IN 1977.

167



SKETCH OF CORNER



1. DAVID HIGGINS REGISTERED LAND SURVEYOR certify the information shown herein was accurately surveyed.
Signature Ground Party Chief

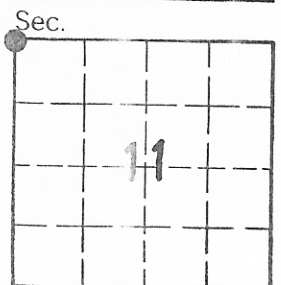
1. CARL R. McMULLEN certify that this Corner Record correctly represents work performed by me or under my direction in compliance with the "Corner Recordation Act" (70-22-101, et seq., M.C.A.)
Signature of Surveyor & Seal

Date: 6-6-88 Reg. No. 4659S

Employer: TRI-STATE LAND SURVEYING

Office of Clerk and Recorder, County of Sanders. This "corner record" was filed for record on June 22 1988 at 11:29 AM was noted on the cross-index plat and is assigned page No. 167, in book No. 3 Moje

David Douglas County Official



Cross Index No. E-17 T. 25N R. 32W P.M.M.

• - corner this sheet