

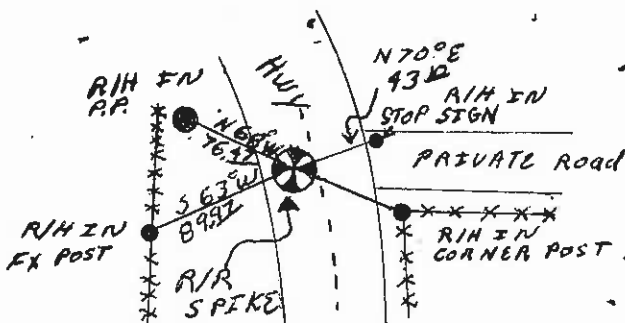
61-247471

CERTIFIED LAND CORNER RECORDATION

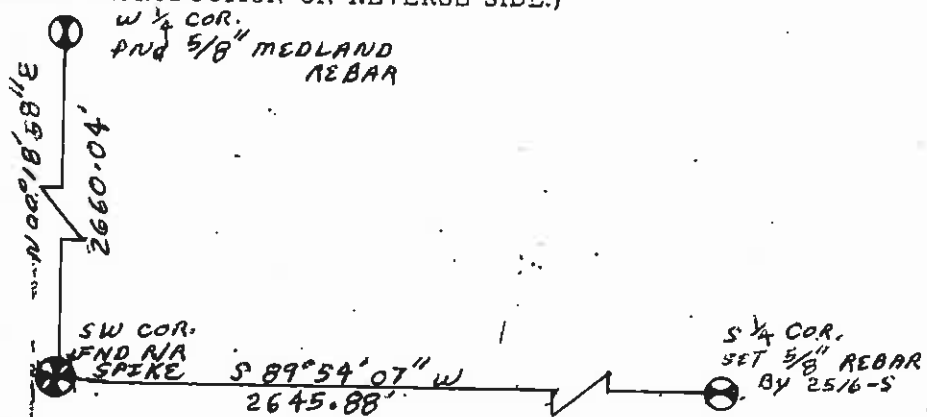
DESCRIPTION OF CORNER EVIDENCE FOUND, AND ORIGINAL RECORD (IF KNOWN)
FOUND AIR SPIKE IN PAVEMENT

DESCRIPTION OF MONUMENT AND ACCESSORIES ESTABLISHED TO PERPETUATE THE ORIGINAL LOCATION OF THIS CORNER:

Date of work: 3/16/79



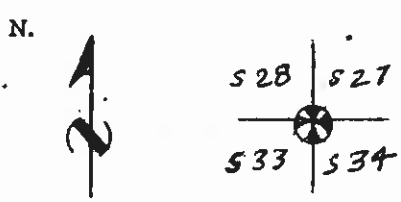
SKETCH, WITH COURSE AND DISTANCE TO ADJACENT CORNERS IF DETERMINED IN THIS SURVEY. (MAY SKETCH OR PASTE REPRODUCTION ON REVERSE SIDE.)



Surveyor's Seal

I, Ron Speirs
certify that the information shown herein is true and correct.
Ron Speirs
Signature of Ground Party Chief

DIAGRAM OF CORNER:



I, C.W. Doyle
certify that I have carefully performed or reviewed the work done on the diagrammed corner as reported on this recordation form and approve the same.
C.W. Doyle
Signature of Surveyor

⊗ = Corner recorded on the sheet

2516-S
Registration Number

Clerk and Recorder, County of Lake, State of Montana

"record" was filed for record on the 4th day of APRIL, 1979, at 3:20 o'clock P.M.,
Ethel M. Harding, Lake County Clerk & Recorder
By: David A. Wilson, Deputy
County Official

247471, In book No. C-866

Cross Index No. 13 T. 25N R. 21W Mer.