

161287

CERTIFIED LAND CORNER RECORDATION

Lief Erickson

DESCRIPTION OF CORNER EVIDENCE FOUND, AND ORIGINAL RECORD (IF KNOWN)

East 1/4 Cor. Sec 14, T25N, R18W stone found in place marked 1/4

DESCRIPTION OF MONUMENT AND ACCESSORIES ESTABLISHED TO PERPETUATE THE ORIGINAL LOCATION OF THIS CORNER:

An 8" fir bears N47° 50' W., 16.0 feet. Scribed 1/4 as a bearing tree. Iron Monument bears S 0° 12' W., 100.0 feet. Date of work: 9/20/63

SKETCH, WITH COURSE AND DISTANCE TO ADJACENT CORNERS IF DETERMINED IN THIS SURVEY. (MAY SKETCH OR PASTE REPRODUCTION ON REVERSE SIDE.)

See attached sketch

DIAGRAM OF CORNER:

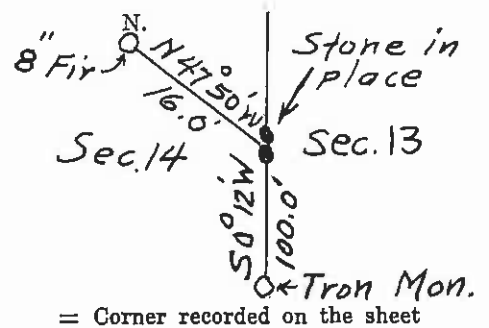
Surveyor's Seal

I, _____ certify that the information shown herein is true and correct.

Signature of Ground Party Chief

I, _____ certify that I have carefully performed or reviewed the work done on the diagrammed corner as reported on this recordation form and approve the same.

Signature of Surveyor: Donald R. Ranger



= Corner recorded on the sheet

424 ES Registration Number

Office of Clerk and Recorder, County of Lake

This "corner record" was filed for record on the 26 day of Sept 1963, was noted on the cross-index plat and is assigned page No. 69, in book No. 1

HAZEL KINNICK

County Official

G. Cowman

Cross Index No. 25 T. 25 R. 18 Mer.