

# CERTIFIED CORNER RECORDATION

Corner Sec. Cor. S29 | S28  
of Secs. S32 | S33 T. 24 N. R. 31 W. P.M.M. SANDERS County

I. Record: 1893 original record by Rodney W. and Arthur Page: 80.00 chs. Set a post, 4 ft. long, 4 ins. square, 24 ins. in the ground for cor. to secs. 28, 29, 32 and 33, marked T24N S28 on NE, R31W S33 on SE, S32 on SW and S29 on NW faces with one notch on S and 4 notches on E edges, from which:

- A cedar 12 ins. diam., bears N53 1/2°E, 12 lks. dist., mkd. T24N R31W S28 BT.
- A hemlock 16 ins. diam., bears S67 1/2°E, 26 lks. dist., mkd. T24N R31W S33 BT.
- A cedar 14 ins. diam., bears S72 3/4°W, 13 lks. dist., mkd. T24N R31W S32 BT.
- A pine 16 ins. diam., bears N34 1/2°W, 28 lks. dist., mkd. T24N R31W S29 BT.

1979 Certified Corner Recordation by H. G. Warren, Book 1, Page 852:

Record—Set post 4 ft. long, 4 ins. square marked with 1 notch on South and 4 notches on East.

Found—No evidence found.

Record—A cedar 12 ins. diam., bears N53 1/2°E, 12 lks. dist., mkd. T24N R31W S28 BT.

Found—No evidence found.

Record—A hemlock 16 ins. diam., bears S67 1/2°E, 26 lks. dist., mkd. T24N R31W S33 BT.

Found—No evidence found.

Record—A cedar 14 ins. diam., bears S72 3/4°W, 13 lks. dist., mkd. T24N R31W S32 BT.

Found—No evidence found.

A pine 16 ins. diam., bears N34 1/2°W, 28 lks. dist., mkd. T24N R31W S29 BT.

Found—No evidence found.

Set 1/2 in. x 18 in. rebar with yellow cap 2734S WARREN in roadway for corner. Corner set off line tree which is 1.91 chains south of corner.  
 Power pole.

1979 Certificate of Survey #423-A by H. Gene Warren: Set pin, found line tree stump.  
 Rebar with yellow cap.

II. Found a 1/2 in. diam. rebar, 8 ins. below grade at the "T" intersection of 2 county roads.  
 From which:

A sawed off power pole, bears N54°W, 25.3 ft.

III. Established 1 new bearing accessory:  
 A power pole, bears S18°W, 29.0 ft.

Painted and signed the bearing tree.

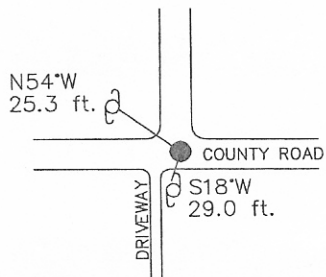
Date of Fieldwork: 11/14/2001

Survey crew: Steve Boyer, Tom Hommel

Magnetic declination: 20° East assumed

Equipment used: Hand compass and loggers tape

U.S. Forest Service, Supervisors Office, 1101 Hwy. 2 West, Libby, MT 59923 (406) 293-6211



SKETCH OF CORNER

NOT TO SCALE

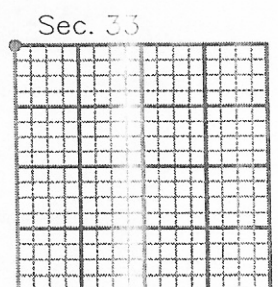
### CERTIFICATION

I, Steven A. Boyer 9750  
 certify the information shown here is true and correct.  
 Signature Steven A. Boyer Ground Mark Chief  
 I, Roger O. Green  
 certify that this Corner Record correctly represents work performed by me or under my direction in compliance with the "Corner Recordation Act" (70-22-107, et seq., M.C.A.)  
 Signature of Surveyor Roger O. Green  
 Date: 11/14/2001 Reg. No. 13769

Employer: U. S. Forest Service

Office of Clerk and Recorder, County of Sanders. This "corner **245517**  
 record" was filed for record on February 20, 2002 @ 3:37 P.M.

was noted on the cross-index plat and is assigned page No. \_\_\_\_\_, in  
 book No. 4 926 Pat Ingraham by: Pat Ingraham Deputy  
 County Official



• corner this sheet

Cross Index No. V-9 T. 24N. R. 31W. P.M., MT