

CERTIFIED CORNER RECORDATION

Corner Sec. Cor. Secs. 5,6,7 & 8 T. 24N R. 31W P.M., MT Sanders County

I. 1893 G.L.O. Original Record by Arthur Page et. al.: Set a post, 4.0 ft. long, 4.0 ins. square 24 ins. in the ground for the cor. of secs. 5,6,7&8, mkd. "T24N S5" on NE; "R31W S8" on SE; "S7" on SW and "S6" on NW faces with 5 notches on the S and E edges. Established four bearing trees.

1977 Certificate of Survey #240, by J.J. Allen, No. 3491S, filed in Sanders County Courthouse: Set an 1/2 in. diam. iron rod, with cap, at intersection of County Rd. and west fence.

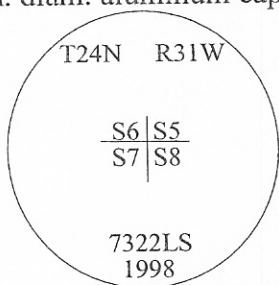
1986 U.S.F.S. Certified Corner Recordation by Thomas C. Hill, No. 5612-S: Found orange plastic cap on a 1/2 in. diam. rod, 5 ins. below the road surface of the County Road. The corner was mid point between R/W fences and intersection of west fence. No original bearing trees were found due to them falling in the road prism. I compared the C. of S. #240 and Washington Water Power records and accepted the found plastic cap on steel rod and established two bearing trees and mkd. a power pole. Set a 6'x4"x4" wood post, 2.0 ft. in the ground with location poster and property boundary signs attached. Painted red bands around the bearing trees and attached Land Survey and Bearing tree signs.

II. Found no evidence of the rebar with plastic cap, found original bearing trees and the reference monument, set in 1986 by Thomas C. Hill.

from which:

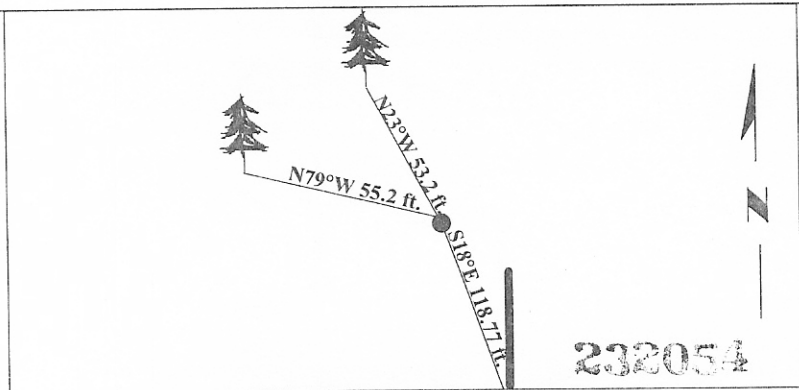
- A pine, 8 ins. diam., bears N23°W, 53.2 ft. dist., mkd. "T24N R31W S6 BT".
- A pine, 7 ins. diam., bears N79°W, 55.2 ft. dist., mkd. "X" "BT".
- Power pole, bears S18°E, 118.77 ft. dist. to a PK nail on west side of pole.

III. At the corner position, as determined by using dist-dist-dist intersect from existing found U.S.F.S. bearing trees and Power pole, set a 3/4 in. diam. x 10 ins. long aluminum driveable rod, 4 ins. below the surface of the road, with a 3 1/4 in. diam. aluminum cap, mkd. as shown.



Painted red bands around the bearing tree and attached Land Survey Monument and Bearing Tree signs.

Magnetic Declination: 20° East.



CERTIFICATION

I. Thomas M. Hommel
certify the information shown herein is true and correct.

I. Alvah F. Hughes
certify that this Corner Record correctly represents work performed by me or under my direction in compliance with the "Corner Recordation Act" (70-22-101, et seq., M.C.A.)

Alvah F. Hughes
Signature of Surveyor & Seal

Date: 9/24/98

Reg. No.: 7322LS

Employer: U.S. FOREST SERVICE

Sec. 8

Office of Clerk and Recorder, County of Sanders This "corner record" was filed for record on Nov. 5, 1998 at 8:34am was noted on the cross-index plat and is assigned page No. 568 in book No. 568 *Tillie Wellston, By: Paula Wright* County Official

• - corner this sheet

No Fee

Cross Index No. E-5 T. 24N R. 31W P.M., MT