

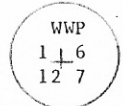
**INSTRUCTIONS**

1. Original and/or subsequent record used to evaluate the corner position.
2. Description of evidence found, note discrepancies in the record, state method of establishing lost or obliterated corners.
3. Description of monument and accessories set to perpetuate the corner position.
4. Sketch of corner, show all pertinent data which can best be shown in a sketch example, corner marking, topography ties, position of accessories, etc.
5. Certification must be signed and sealed by Land Surveyor registered in the State of Montana.
6. Fill in Cross Index & Section Diagram at bottom of sheet.

**CERTIFIED CORNER RECORDATION**

Corner SOUTHWEST CORNER SECTION 6 T. 24N R. 31W P.M.M. SANDERS County

- I. 1893 G.L.O. Record: Set a post 4 ft. long 4 ins. square 24 ins. in the ground for Cor. to sec. 1,6,7,& 12 marked T24N S6 on N.E.; R31W S7 on S.E.; R32W S12 on S.W. and S1 on N.W. faces with 1 notch on the N. and 5 notches on S. edges from which;
- A tamarack 26 ins. diam. bears N68°E 37 lks. dist. marked T24N R31W S6 BT.
  - A pine 10 ins. diam. bears S34°E 29 lks. dist. marked T24N R31W S7 BT.
  - A fir 20 ins. diam. bears S59°1/2'W 31 lks. dist. marked T24N R32W S12 BT.
  - A fir 8 ins. diam. bears N46°3/4'W 30 lks. dist. marked T24N R32W S1 BT.
- 1982 B.L.M. Dependent Resurvey: The corner of sec. 1,6,7,&12 monumented with a concrete post 6x6 ins. set flush with the surface of the ground, and is accepted as a careful and faithful reestablishment of the position of the original cor., with brass cap mkd.



The cor. is situated at the cor. of pole fences, extending S. and W.

1982 Corner Record: by Warren 2734S filed Sanders Co. courthouse, found WWP brass cap as shown.

- II. I found a 3 1/4 ins. dia. brass cap set in concrete flush with the ground marked as shown;



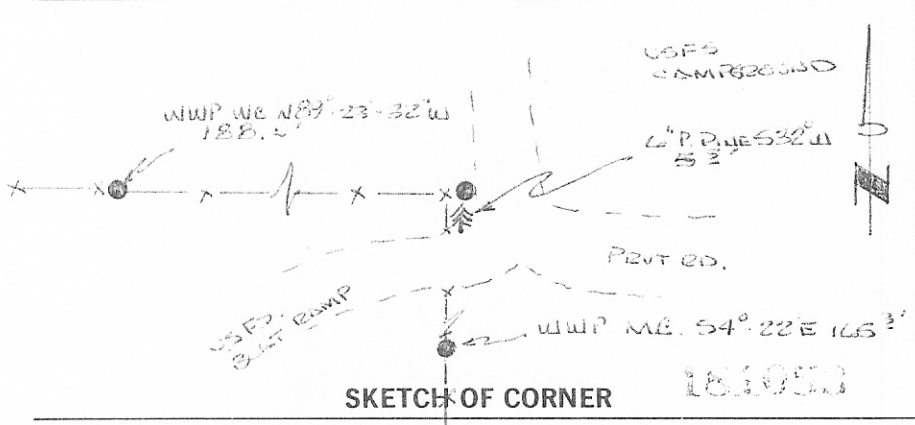
From which;

- A 6 ins. diam. P.Pine bears S32°W 5.5ft. dist. partial visible face (no scribing and facing east). 54-3 BT. sign attached.
- A W.W.P. M.C. brass cap monument set in concrete bears S4°22'E 165.3 ft. dist. mkd. M.C. 12/7 T24N R31W R32W WWP BDRY. Mon. falls in a N. S. wood rail fence.
- A W.W.P. witness mon. (brass cap set in concrete) bears N89°23'32"W 188.1 ft. dist. mkd. WWP WC 1/12 T24N R32W WWP BDRY. Mon. falls in a E.W. wood rail fence.
- A 1/2 ins. diam. steel rebar with a orange plastic cap mkd. JJA 3491S 6 ins. out of ground bears east 164.4 ft. dist.

No original bearing trees were found due to logging activity, roads and recreational site.

- III. Set a 6 ft. galvanized post 1.5 ft. southwest of the sec. corner with survey marker decal attached. Set 6 ft. galvanized post at both the W.W.P. M.C. and W.C. monuments with survey marker decal attached.

2 PAGE 851



**SKETCH OF CORNER**

CERTIFICATION

I, RONALD A. REARSON  
certify the information shown herein to be true and correct.

*R. Rearson*  
Signature of Third Party Client

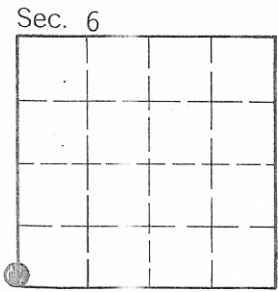
I, THOMAS C. HILL  
certify that this Corner Record correctly represents work performed by me or under my direction in compliance with the Corner Recordation Act, 70-32, et seq.

*T. Hill*  
Signature of Surveyor & Seal

Date: 7/86 Reg. No. 5612-S  
Employer: U.S.D.A. FOREST SERVICE

Office of Clerk and Recorder, County of Sanders. This "corner record" was filed for record on July 25 - 1986 was noted on the cross-index plat and is assigned page No. 851, in book No. 2

*Sally Lawden*  
County Official



Cross Index No. E-1 T. 24 R. 31 P.M.M.

• - corner this sheet