

CERTIFIED LAND CORNER RECORDATION

199839

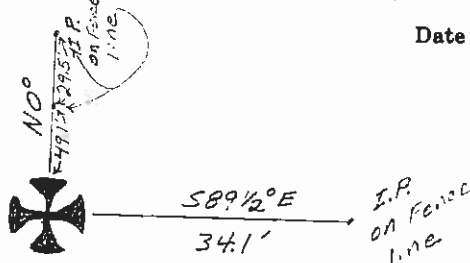
DESCRIPTION OF CORNER EVIDENCE FOUND, AND ORIGINAL RECORD (IF KNOWN)

(Original) A trap rock 18x9x8 inches. Pits in all sections.
(Found) The original rock 6 inches under ground surface.

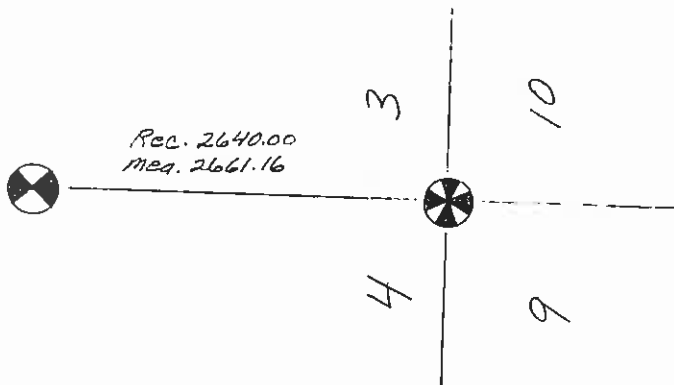
DESCRIPTION OF MONUMENT AND ACCESSORIES ESTABLISHED TO PERPETUATE THE ORIGINAL LOCATION OF THIS CORNER:

I referenced the rock as shown:

Date of work: 12-3-70



SKETCH, WITH COURSE AND DISTANCE TO ADJACENT CORNERS IF DETERMINED IN THIS SURVEY. (MAY SKETCH OR PASTE REPRODUCTION ON REVERSE SIDE.)



Surveyor's Seal

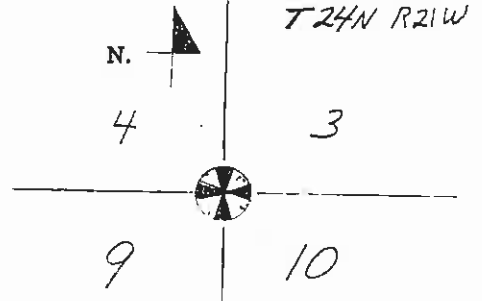
I, certify that the information shown herein is true and correct.

Signature of Ground Party Chief

I, certify that I have carefully performed or reviewed the work done on the diagrammed corner as reported on this recordation form and approve the same.

G.D. Atkinson - County Surveyor
Signature of Surveyor
In Coop with State Highway Surveyors
2234 E.S.
Registration Number

DIAGRAM OF CORNER:



= Corner recorded on the sheet



Office of Clerk and Recorder, County of Lelie

"corner record" was filed for record on the 24 day of August 1971, 4:45, was noted on the cross-index plat and is

signed page No. C-200, in book No. 199839

ETHEL M. HARDING
Jewel Bantz
County Official

Cross Index No. E-13 T. 24 N. R. 21 W Mer.