

CERTIFIED LAND CORNER RECORDATION

213976

Lake County

DESCRIPTION OF CORNER EVIDENCE FOUND, AND ORIGINAL RECORD (IF KNOWN)

Record:

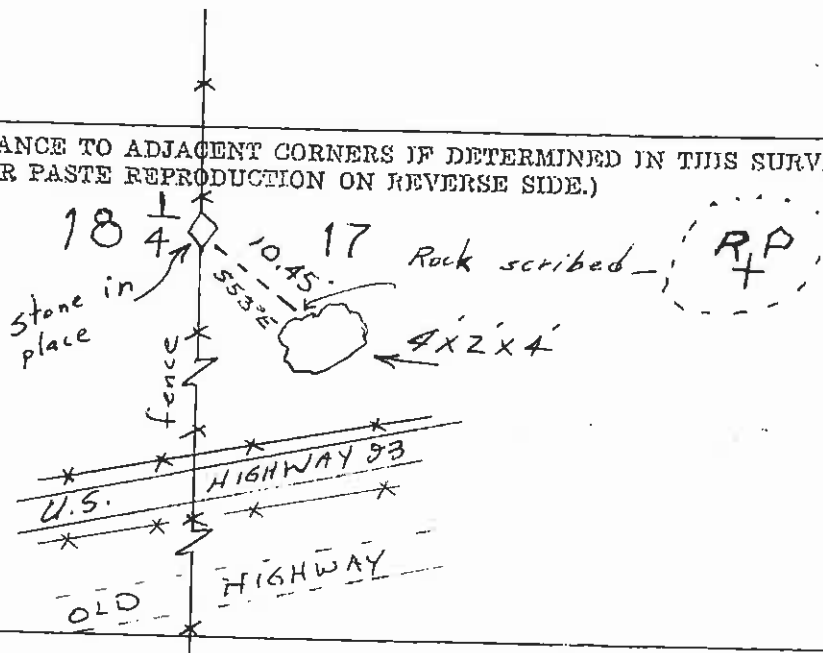
Set a trap rock, 18x8x5 ins., 18 ins. in the ground, for 1/4 sec. cor., marked 1/4 on W. face; raise a mound of stone 2 ft. base, 1 1/2 ft. high, W. of corner. Pits impracticable.

DESCRIPTION OF MONUMENT AND ACCESSORIES ESTABLISHED TO PERPETUATE THE ORIGINAL LOCATION OF THIS CORNER:

Date of work: 10/26/73

I find the stone as described above. I piled large rock 1 foot high around the stone, and scribed a large rock RP with a cross as shown below.

SKETCH, WITH COURSE AND DISTANCE TO ADJACENT CORNERS IF DETERMINED IN THIS SURVEY. (MAY SKETCH OR PASTE REPRODUCTION ON REVERSE SIDE.)



Surveyor's Seal

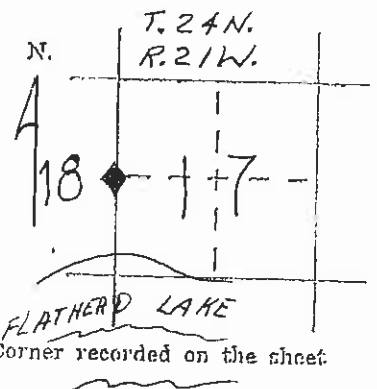
I, \_\_\_\_\_ certify that the information shown herein is true and correct.

Signature of Ground Party Chief

I, Christopher Balstad Jr. certify that I have carefully performed or reviewed the work done on the diagrammed corner as reported on this recordation form and approve the same.

Signature of Surveyor: Christopher Balstad Jr.

DIAGRAM OF CORNER:



33225 Registration Number

County Clerk and Recorder, County of Lake

"corner record" was filed for record on the NOV 14 1973 day of 1973, was noted on the cross-index plat and in book No. C-463

Ethel M. Harsb... County Official

Cross Index No. 6-5 T. 24 R. 21