

CERTIFIED LAND CORNER RECORDATION

DESCRIPTION OF CORNER EVIDENCE FOUND, AND ORIGINAL RECORD (IF KNOWN)

PK nail and disc

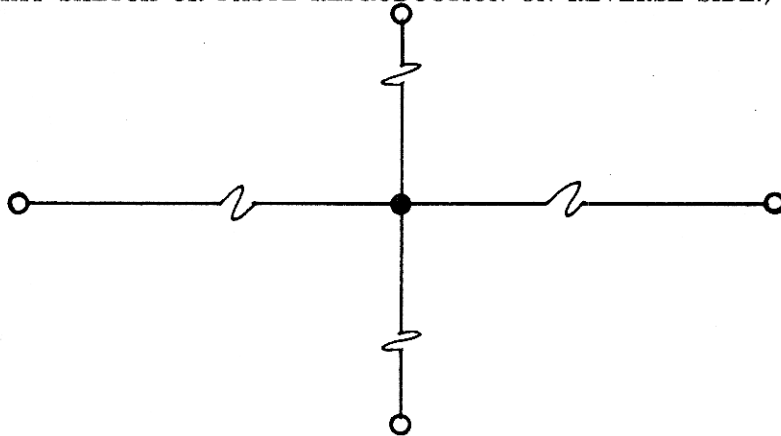
DESCRIPTION OF MONUMENT AND ACCESSORIES ESTABLISHED TO PERPETUATE THE ORIGINAL LOCATION OF THIS CORNER:

Date of work: May 1979

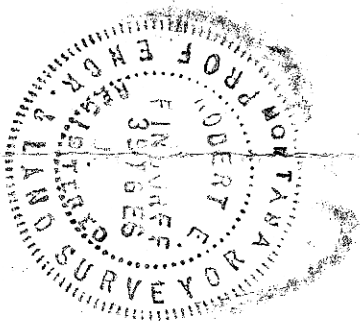
5/8" ϕ x 24" Rebar set at nail

Accessories: 1/2" ϕ x 12" Rebar \pm 2' from power pole S45^{OW} 40.37'
 1/2" ϕ x 12" Rebar in fenceline South 30.00'
 1/2" ϕ x 12" Rebar in fenceline S45^{OE} 45.63'

SKETCH, WITH COURSE AND DISTANCE TO ADJACENT CORNERS IF DETERMINED IN THIS SURVEY. (MAY SKETCH OR PASTE REPRODUCTION ON REVERSE SIDE.)



Surveyor's Seal



I,, certify that the information shown herein is true and correct.

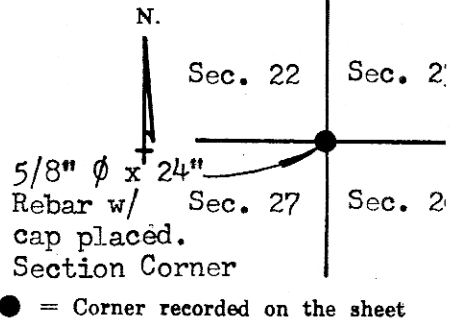
Signature of Ground Party Chief

I, Robert E. Findorff, certify that I have carefully performed or reviewed the work done on the diagrammed corner as reported on this recordation form and approve the same.

Robert E. Findorff
 Signature of Surveyor Robert E. Findorff

3976 ES
 Registration Number

DIAGRAM OF CORNER:
 T24N, R4W, PMM



Office of Clerk and Recorder, County of

This "corner record" was filed for record on the day of 19....., was noted on the cross-index plat and is assigned page No....., in book No.....