

INSTRUCTIONS

Q-CO-STD/152
Created 4/8/92

1. Original and/or subsequent record used to evaluate the corner position.
2. Description of evidence found, note discrepancies in the record, state method of establishing lost or obliterated corners.
3. Description of monument and accessories set to perpetuate the corner position.
4. Sketch of corner, show all pertinent data which can best be shown in a sketch example, corner marking, topography ties, position of accessories.
5. Certification must be signed and sealed by Land Surveyor registered in the State of Montana.
6. Fill in Cross Index & Section Diagram at bottom of sheet.

CERTIFIED CORNER RECORDATION

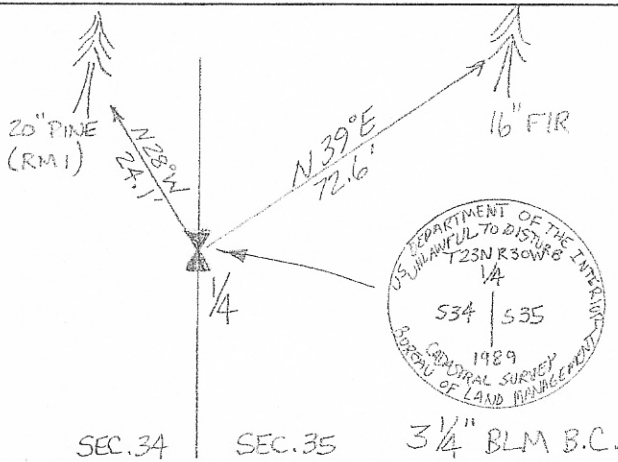
Corner 1/4 of Secs. 34 & 35 T. 23N R. 30 West P.M.M. Sanders County

RECORD

- GLO 1893** Set a post, 3 ft. long, 3" x 3" square post, 24" in the ground, marked with "1/4" on the W. face.
From which:
A 10" Fir, bears S 62° E, 37 links dist., marked: "1/4 S35 BT."
A 6" Pine, bears N 73°15' W, 4 links dist., marked: "1/4 S34 BT."
- GLO 1906** Resurvey. Found old 1/4 corner in bad state of preservation; re-establish it at the same point as follows.
Set a granite stone, 18"x12"x8", 12" in the ground for the 1/4 corner, marked "1/4" on the W. face.
From which:
A 12" Pine, bears S 70° E, 94 links dist., marked: 1/4 S35 BT.
A 12" Pine, bears S 77 1/2° W, 155 links dist., marked: 1/4 S34 BT.
- 1980, 2734S** Found no evidence of the original corner. Established the corner by ties into W.W.P. monument. Set 2" pipe, with 2 1/2" brass cap in ground. Raise a collar of stone.
From which new BT's:
A 7" Pine, bears N 24° W, 36.1 ft.
A 13" Pine, bears S 69° W, 32.2 ft.
Volume 1, Page 999. Doc. # 155781.
- 1983, 2734S** COS 656. Found brass cap.
- 1983, 2734S** COS 657. Found brass cap.
- 1989, BLM** Mark Dixon, Cadastral Surveyor. Found original granite stone, 18"x12"x8", firmly set, 12" in the ground, mkd. 1/4 on the W. face.
From which the remains of a 1906 BT:
A rotted pine stump, 17" diam., bears S 77 1/2° W, 155 links dist., with BT visible on a weathered face.
From which bearing trees marked by person(s) unknown:
A 23" Pine, bears S 49 1/2° W, 58 links dist., with healed blaze.
A 15" Pine, bears N 31 1/2° W, 36 1/2 links dist., with healed blaze.
Set a stainless steel post, 30" long, 2 1/2" diameter, 20" in the ground, with brass cap.
From which the new BT's:
A 10" Fir, bears N 39° E, 109 1/2 links dist., marked: 1/4 S35 BT.
A 9" Pine, bears N 21 1/4° W, 97 1/2 links dist., marked: 1/4 S34 BT.
- 1990, 2734S** COS 999. Found monument.

FOUND

- 2001** Found 3 1/4" diameter BLM brass cap on stainless steel pipe, firmly set, projecting 8" above ground in a collar of stones.
From which the remains of record BT's:
A 16" Fir, bears N 39° E, 72.6 ft., with illegible scribing visible on PHB.
Mark a new bearing tree:
A 20" Pine, bears N 28° W, 24.1 ft., marked: RM1.
Paint and place BT tags on bearing trees, and set a MDT survey post with decal 1 ft. N. of corner.
See Certificate of Survey on file at the Sanders County Courthouse.



SKETCH OF CORNER

CERTIFICATION
I, Kevin Cassidy
certify the information shown herein is true and correct.
Kevin P. Cassidy
Signature Ground Party Chief

I, R.A. Ainsworth
certify that this Corner Record correctly represents work performed by me or under my direction in compliance with the Corner Recordation Act" (70-22-101, et seq., M.C.A.)
RICHARD A. AINSWORTH
Signature of Surveyor & Seal
Date: 8/01 Reg. No. 29235
Employer: Professional Consultants, Inc.

Sec.35

254623 BOOK: 5 CORNER REC PAGE: 32 Pages: 0
STATE OF MONTANA SANDERS COUNTY
RECORDED: 03/02/2004 9:24 KOI: COR RECORD
PAT INGRAHAM CLERK AND RECORDER
FEE: \$0.00 BY: Rita Waldman
TO: PROFESSIONAL CONSULTANTS, INC. P.O. BOX 1750, MISSOULA, MT
