

61-241871

CERTIFIED LAND CORNER RECONSTRUCTION

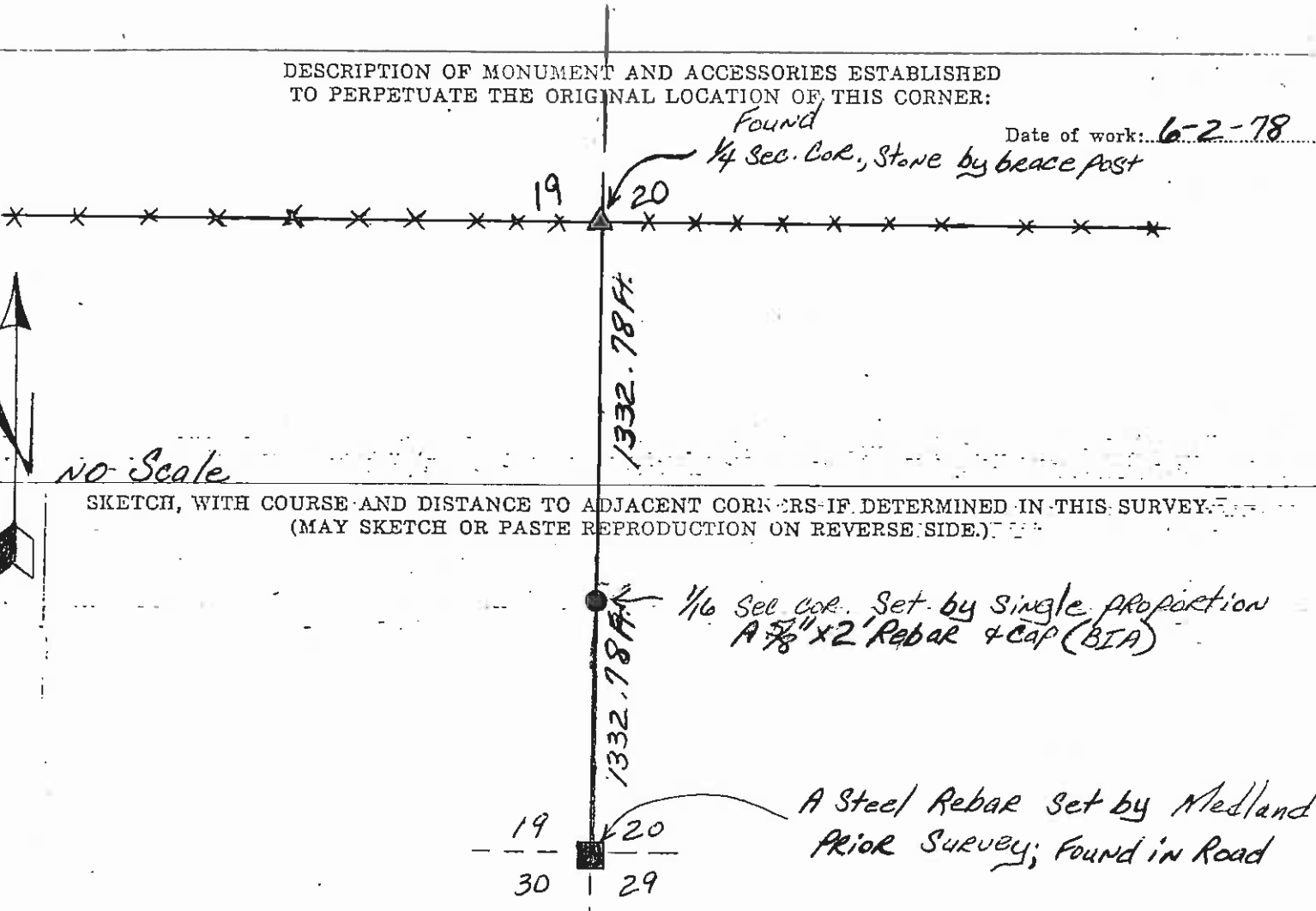
DESCRIPTION OF CORNER EVIDENCE FOUND, AND ORIGINAL RECORD (IF KNOWN)

FOUND: The broken remains of the original marked stone plainly visable. The original stone and piece were lying loose by a brace post. This post purportedly occupies the original corner position. The brace post is rotten at the base but still stands.

ORIGINAL RECORD: Set a slate stone, 18x12x6 inches, 12 inches in the ground, for the 1/4 corner, marked 1/4 on the west face; and raise a mound of stone, 2 ft base 1 1/2 ft. high west of corner.

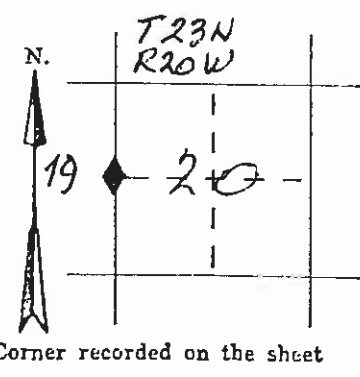
DESCRIPTION OF MONUMENT AND ACCESSORIES ESTABLISHED TO PERPETUATE THE ORIGINAL LOCATION OF THIS CORNER:

Date of work: 6-2-78
Found 1/4 Sec. Cor., Stone by brace post



SKETCH, WITH COURSE AND DISTANCE TO ADJACENT CORNERS-IF DETERMINED IN THIS SURVEY. (MAY SKETCH OR PASTE REPRODUCTION ON REVERSE SIDE.)

DIAGRAM OF CORNER:



Surveyor's Seal

I, _____ certify that the information shown herein is true and correct.

Signature of Ground Party Chief

I, Christopher Balstad Jr. certify that I have carefully performed or reviewed the work done on the diagrammed corner as reported on this recordation form and approve the same.

Signature of Surveyor: Christopher Balstad Jr.

33223
Registration Number



Office of Clerk and Recorder, County of Lake, State of Montana
This "corner record" was filed for record on the 13th day of June 1978 at 11:02 o'clock A.M.
Signed No. 241871 in book No. C-804
Ethel M. Harding, Clerk and Recorder
County Official By: [Signature] Deputy
Cross Index No. P-5 T. 23 N. R. 20 W. Mer.