

INSTRUCTIONS

1. Original and/or subsequent record used to evaluate the corner position.
2. Description of evidence found, note discrepancies in the record, state method of establishing lost or obliterated corners.
3. Description of monument and accessories set to perpetuate the corner position.
4. Sketch of corner, show all pertinent data which can best be shown in a sketch example, corner marking, topography (ies, position of accessories, etc.
5. Certification must be signed and sealed by Land Surveyor registered in the State of Montana.
6. Fill in Cross Index & Section Diagram at bottom of sheet.

CERTIFIED CORNER RECORDATION

Corner N1/4 Corner Section 22 T. 23N R. 19W P.M.M. LAKE County

GLO RECORD: 40.02 chains; Set a slate stone, 16(?)x12x9 ins., 11 ins., in the ground, for 1/4 sec. cor., marked 1/4 on N. face; from which

A tamarack, 14 ins. dia., bears N.46°W., 21 lks. dist., marked 1/4 S 15 BT.

A tamarack, 9 ins. dia., bears S.77°W., 32 lks. dist., marked 1/4 S 22 BT.

FOUND: Original stone; loose

SET: 2 inch Brass Cap on 2 inch galvanized pipe Stamped:

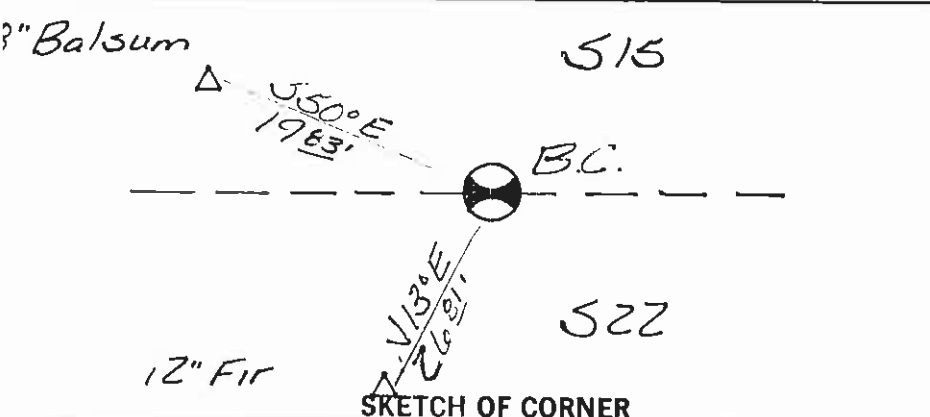
T23N R19W
S15
N1/4 -----
S22
7975S

from which

A balsum, 8 ins. dia., bears N.50°W., 19.83 ft. dist., 60d spike on SW side, face blazed and tagged with MARLS Land Survey Monument tag.

A fir, 12 ins. dia., bears S.13°W., 26.81 ft. dist., 60d spike on E side, face blazed and tagged with MARLS Land Survey Monument tag.

REFERENCE: C.O.S. #5079, Lake County



CERTIFICATION

I, William F. Ruckhoff
certify the information shown herein is true and correct.
Signature of Found Party Chief

I, Thomas E. Sands
certify that this Corner Record correctly represents work performed by me or under my direction in compliance with the "Corner Recordation Act" (70-22-301, et seq., M.C.A.).
Signature of Surveyor & Seal

Date: 4/13/95 Reg. No. 7975-S

Employer: Sands Surveying, Inc.

Office of Clerk and Recorder, County of Lake. This "corner record" was filed for record on APR 14 '95 at 11:04 AM was noted on the cross-index plat and is assigned page No. 365202, in book No. _____

RUTH E. HODOR County Official
By Judy Green
Cross Index No. N-15 T. 23 R. 19 P.M.M.

