

INSTRUCTIONS

Q:CO-STD/152
Created 4/8/92

1. Original and/or subsequent record used to evaluate the corner position.
2. Description of evidence found, note discrepancies in the record, state method of establishing lost or obliterated corners.
3. Description of monument and accessories set to perpetuate the corner position.
4. Sketch of corner, show all pertinent data which can best be shown in a sketch example, corner marking, topography ties, position of accessories.
5. Certification must be signed and sealed by Land Surveyor registered in the State of Montana.
6. Fill in Cross Index & Section Diagram at bottom of sheet.

CERTIFIED CORNER RECORDATION

Corner Cor. of Secs. 25, 26, 35 & 36 T. 22N R. 30 West P.M.M. Sanders County

RECORD

GLO 1889 Set a post, 4 ft. long, 4" square, 24" in the ground, for the cor. of secs. 25, 26, 35, & 36, marked T22N S25 on the NE, R30W S36 on the SE, S35 on the SW, S26 on the NW and 1 notches on the S. and E. edges.
From which:
A 8" Pine, bears N 05°50' E, 53 links dist., marked: T22N R30W S25 BT.
A 10" Fir, bears S 32°40' E, 40 links dist., marked: T22N R30W S36 BT.
A 8" Fir, bears S 13°35' W, 12 links dist., marked: T22N R30W S35 BT.
A 9" Pine, bears N 58°20' W, 65 links dist., marked: T22N R30W S26 BT.

1976, 534ES. Found steel rod by others.
Vol. 1 Page 495, Doc.# 136814.

1983, BLM Group No. 721. Found 1/2" rebar, with an attached disc, marked: "SEC COR 534 ES."
From which the remains of one original BT:
A stump hole, bears N 58°20' W, 65 links dist., with a portion of the blaze, marked: T22 R3, lying alongside.
At the corner point, set a 2 1/2" x 30" aluminum post, 24" in the ground, with an aluminum cap.
From which:
A 10" Larch, bears N 65° E, 105 links dist., marked: T22N R30W S25 BT.
A 8" Larch, bears N 26° W, 76 links dist., marked: T22N R30W S26 BT.
The corner is situated 10 links N. of the cor. of fences extending N., E., and W. Bury the rebar inside the aluminum post.

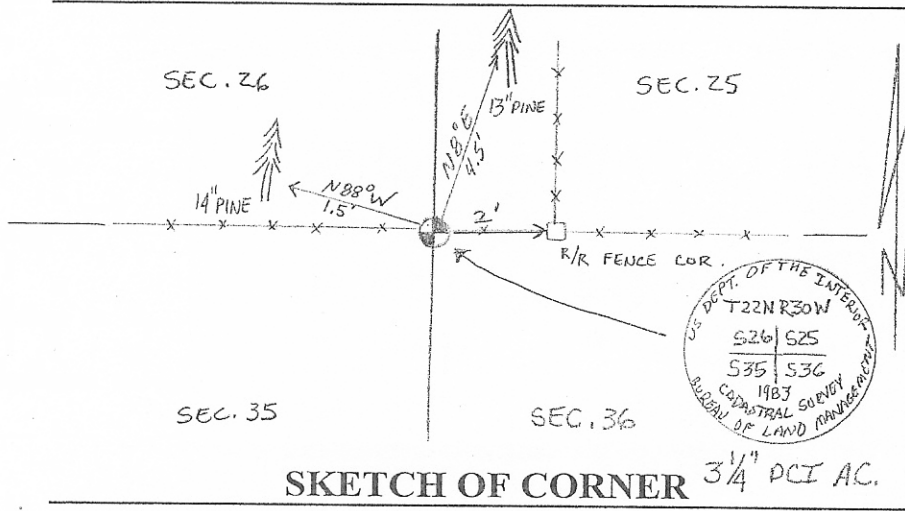
1998, 2734S COS 1922. Found section corner, 3 1/4" BLM aluminum cap.

2000, 5940S COS 2096. Found 2 1/2" USDA aluminum cap.

FOUND

2001 Found 2 1/2" diameter aluminum pipe, firmly set, projecting 5" above ground, with a 3 1/4" BLM aluminum set in a E.-W. Fence line.
From which (2) new BT's:
A 14" Pine, bears N 88° W, 1.5 ft., marked: RM1.
A 13" Pine, bears N 08° E, 4.5 ft., marked: RM2.

Blaze, paint, and tag new bearing trees.
Corner is situated 2 ft. W. of a fence intersection, which bears E.-W. & N.
See Certificate of Survey on file at the Sanders County Courthouse.



CERTIFICATION
I, Kevin Cassidy
certify the information shown herein is true and correct.
Kevin Cassidy
Signature Ground Party Chief
I, R.A. Ainsworth
certify that this Corner Record correctly represents work performed by me or under my direction in compliance with the Corner Recordation Act (70-22-101, et seq. M.C.A.)
Richard A. Ainsworth
Signature of Surveyor & Seal
Date: 8/01 Reg. No. 29235
Employer: Professional Consultants, Inc.

254621 BOOK: 5 CORNER REC PAGE: 30 Pages: 0
STATE OF MONTANA SANDERS COUNTY
RECORDED: 03/02/2004 9:23 KOI: COR RECORD
PAT INGRAHAM CLERK AND RECORDER
FEE: \$0.00 BY: *R. Woodswon*
TO: PROFESSIONAL CONSULTANTS, INC. P.O. BOX 1750, MISSOULA, MT

Sec.36
