

INSTRUCTIONS

Q:CO-STD/152  
Created 4/8/92

1. Original and/or subsequent record used to evaluate the corner position.
2. Description of evidence found, note discrepancies in the record, state method of establishing lost or obliterated corners.
3. Description of monument and accessories set to perpetuate the corner position.
4. Sketch of corner, show all pertinent data which can best be shown in a sketch example, corner marking, topography ties, position of accessories.
5. Certification must be signed and sealed by Land Surveyor registered in the State of Montana.
6. Fill in Cross Index & Section Diagram at bottom of sheet.

CERTIFIED CORNER RECORDATION

Corner 1/4 of Secs. 2 & 11 T. 22N R. 30 West P.M.M. Sanders County

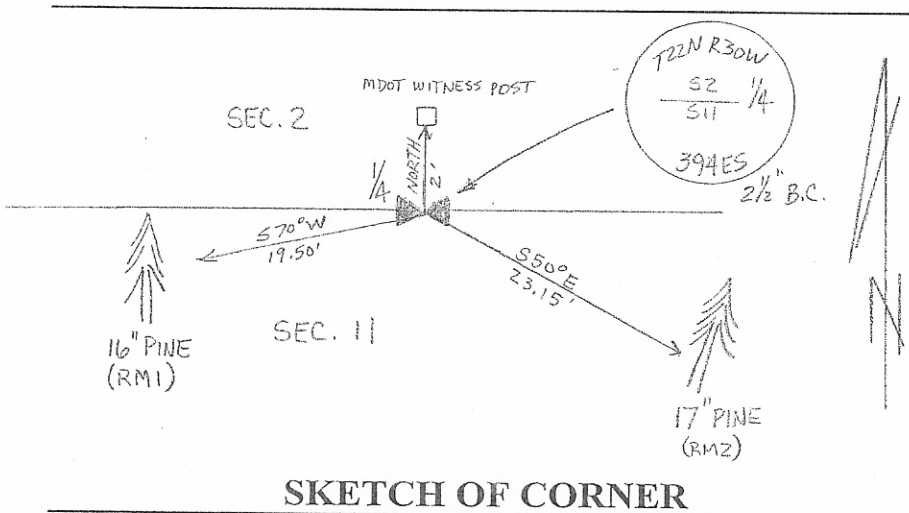
RECORD

- GLO 1893** Set a granite stone, 14"x10"x18", 10" in the ground, marked with "1/4" on the N. face.  
From which:  
A 10" Fir, bears N 47° E, 105 links dist., marked: "1/4 S2 BT."  
A 40" Pine, bears S 47° W, 12 links dist., marked: "1/4 S11 BT."
- 1974, 394ES** Found stone of correct size marked as described, loosely set. Found stumps of both original BT's. Set a 2 1/2" x 36" iron pipe, with brass cap, 12" in the ground and surrounded with a mound of stone. Note: Per corner form by 394ES, (2) new BT's were taken to the NE & SE of the corner, but no bearings and distances printed on the form. Vol. 1 Page 495.
- 1999, 5940S** Minor Subdivision 2032 MS. Found brass cap.
- 1999, 5940S** COS 2004. Found brass cap.

FOUND

- 2001** Found 2 1/2" brass cap on a 2 1/2" iron pipe, firmly set, projecting 8" above ground in a collar of stone. Found original BT stumps as described, but found no evidence of the (2) BT's described on the 1974 Cor. Rec. form by 394ES.
- From which the new BT's:  
A 16" Pine, bears S 70° W, 19.5 ft., marked: RM1.  
A 17" Pine, bears S 50° E, 23.15 ft., marked: RM2.

Place BT tags on trees and set a MDT post with "Survey Marker" sticker 2' N. of corner.  
See Certificate of Survey on file at the Sanders County Courthouse.



CERTIFICATION

I, Kevin Cassidy  
certify the information shown herein is true and correct.

*Kevin Cassidy*  
Signature Ground Party Chief

I, R.A. Ainsworth  
certify that this Corner Record correctly represents work performed by me or under my direction in compliance with the "Corner Recordation Act" (70-22-101, et seq., M.C.A.)

*R.A. Ainsworth*  
Signature of Surveyor & Seal

Date: 8/01 Reg. No. 2923 S

Employer: Professional Consultants, Inc.

254615 BOOK: 5 CORNER REC PAGE: 24 Pages: 0  
STATE OF MONTANA SANDERS COUNTY  
RECORDED: 03/02/2004 9:06 KOI: COR RECORD  
PAT INGRAHAM CLERK AND RECORDER  
FEE: \$0.00 BY: *R.A. Ainsworth*  
TO: PROFESSIONAL CONSULTANTS, INC. P.O. BOX 1750, MISSOULA, MT

Sec. 2
