

5 | 4
8 | 9

CERTIFIED CORNER RECORDATION

Corner _____ T. 22N R. 19W P.M.M. Lake County

1905 G.L.O. Survey By William K. Trippet Book 4596, Page 38

"Set a slate stone, 16x6x6 ins., 11 ins. in the ground, for cor. of secs. 4, 5, 8, and 9, marked with 5 notches on S. and 4 notches on E. edge; from which:

- A tamarack, 9 ins. dia., bears N.48°E., 27 lks. dist., marked T 22 N R 19 W S 4 B T.
- A tamarack, 9 ins. dia., bears S.30°E., 70 lks. dist., marked T 22 N R 19 W S 9 B T.
- A tamarack, 9 ins. dia., bears S.27°W., 14 lks. dist., marked T 22 N R 19 W S 8 B T.
- A tamarack, 9 ins. dia., bears N.38°W., 11 lks. dist., marked T 22 N R 19 W S 5 B T."

1971 Corner Recordation by Christopher Balstad Jr., 3322S. CR# C-160

"Raised a mound of stone around section corner stone and placed a Bearing tree tags and a Section Corner tag on scribed trees."

2000 Remonumentation by S. R. Smith

I find a slate stone, 16x6x6 ins, marked with 5 notches on the south side and 4 notches on the east edge, as set by William K. Trippet. At the position marked by the found slate stone, I set a standard M.D.O.H monument, which consists of a 2 1/4 ins (5.715 cm) diameter, 30 ins (76.2 cm) long aluminum pipe with flared base and 3 1/4 ins (8.255 cm) diameter M.D.O.H aluminum cap, stamped as shown below. I bury the found stone monument upside-down below the newly set monument. Top of aluminum cap is level with ground. I place a stone collar around cap, from which:

A fir, 18 ins (45.72 cm) DBH, marked by Balstad, scribing overgrown, bears S72°E 38.66 ft (11.784 m) distant.

A larch, 9 ins (22.86 cm) DBH, marked by Balstad, scribing overgrown, bears N74°W 15.80 ft (4.816 m) distant.

New references established this survey:

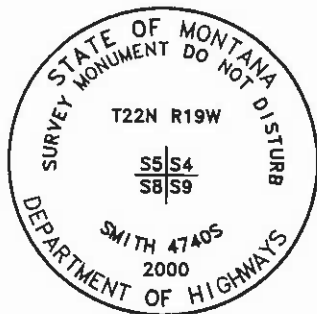
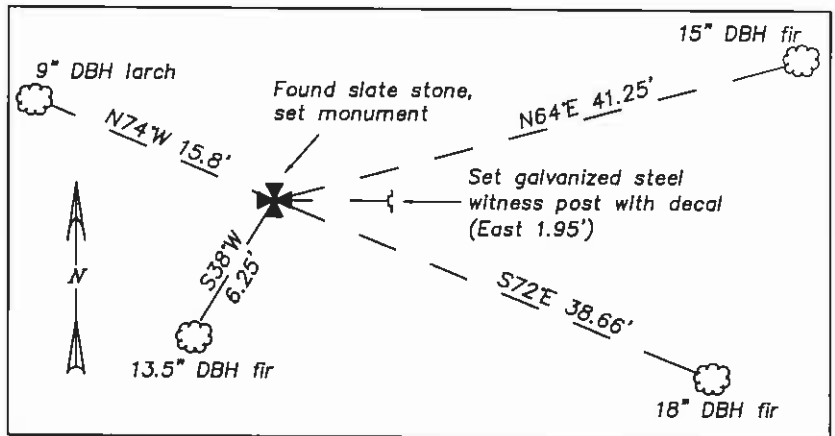
A fir, 15 ins (38.1 cm) DBH, marked T22N R19W S4 BT, bears N64°E 41.25 ft (12.573 m) distant.

A 3 1/4 ft (106.68 cm) long galvanized steel witness post with M.D.T survey decal attached, bears East 1.95 ft (58.5 cm).

A fir, 13.5 ins (34.29 cm) DBH, marked T22N R19W S8 BT, bears S38°W 6.25 ft (1.905 m) distant.

Bearings listed in remonumentation section were measured with a hand compass, declination 18°East.

Refer to Certificate of Survey filed in conjunction with this corner recordation for ties to adjacent section controlling corners.



SKETCH OF CORNER

CERTIFICATION

I, Robert K. Wunderlich certify the information shown herein is true and correct.

Robert K. Wunderlich
Signature of Grover

I, S. R. Smith certify that this Corner Record was performed by me or under my direction in compliance with the "Corner Recordation Act" (70-225-101 & Sec. 102.)

S. R. Smith
Signature of Surveyor

Date: 12/31/00 Reg. No. 4740S

Employer: Smith Surveying

Office of Clerk and Recorder, County of Lake. This "corner record" was filed for record on JUN 04 2001 1:18 pm

was noted on the cross-index plat and is assigned page No. 416241 in book No. C-2388 RUTH E. HODGES County Official

Cross Index No. E-9 T. 22N R. 19W P.M.M.

Adopted July 1, 1981, Montana Board of Professional Engineers & Land Surveyors

Sec. 8

			✱

✱ corner this sheet
steling\polson-saal\cornerrec\118